



# Parks and Recreation Commission

November 03, 2025

7:00 PM

7071 University Avenue NE

---

## Agenda

### Call to Order

### Roll Call

### Approval of Agenda

### Approval of Meeting Minutes

1. [October 6, 2025 Parks and Recreation Commission Minutes](#)

### Open Forum

The open forum allows the public to address the Commission on subjects that are not on the Regular Agenda. The Commission will accept feedback or questions from the public and asks that comments are limited to five minutes or less.

### New Business

2. [Refined Concept Plan for Flanery Park](#)
3. [Proposed Park Shelter Rental and Deposit Rate Adjustment](#)
4. [Revised 2026 Meeting Schedule](#)

### Old Business

### Staff Reports

5. [Fridley Parks and Recreation Staff Report](#)

### Adjournment

---

#### Accessibility Notice:

- If you need free interpretation or translation assistance, please contact City staff.
- Si necesita ayuda de interpretación o traducción gratis, comuníquese con el personal de la ciudad.
- Yog tias koj xav tau kev pab txhais lus los sis txhais ntaub ntawv dawb, ces thov tiv tauj rau Lub Nroog cov neeg ua hauj lwm.
- Haddii aad u baahan tahay tarjumaad bilaash ah ama kaalmo tarjumaad, fadlan la xiriir shaqaalaha Magaalada.

Upon request, accommodation will be provided to allow individuals with disabilities to participate in any City of Fridley services, programs or activities. Hearing impaired persons who need an interpreter or other persons who require auxiliary aids should contact [CityClerk@FridleyMN.gov](mailto:CityClerk@FridleyMN.gov) or (763) 572-3450.



# AGENDA REPORT

---

**Meeting Date:** November 3, 2025

**Meeting Type:** Parks and Recreation Commission

**Submitted By:** Mike Maher, Parks and Recreation Director

## **Title**

---

October 6, 2025 Parks and Recreation Commission Minutes

## **Background**

---

Attached are the meeting minutes of the October 6, 2025 Parks and Recreation Commission.

## **Financial Impact**

---

None.

## **Recommendation**

---

Staff recommends approval of the October 6, 2025 Parks and Recreation Commission minutes.

## **Attachments and Other Resources**

---

- October 6, 2025 Parks and Recreation Minutes.

## **Vision Statement**

We believe Fridley will be a safe, vibrant, friendly and stable home for families and businesses.



# Park Commission Meeting

October 6, 2025

6:00 PM

Commons Park, 6249 7<sup>th</sup> St. NE, Fridley, MN 55432

## Minutes

### **Call to Order**

Chair Borman called the Parks and Recreation Commission meeting to order at 6:00 p.m.

### **Present**

Peter Borman  
 Tim Kirk  
 Jodi Rehlander  
 Ken Schultz  
 Don Whalen  
 Melissa Luna  
 EB Graham

### **Absent**

### **Also Present**

Councilmember Patrick Vescio  
 Councilmember Ryan Evanson  
 Mike Maher, Parks and Recreation Director

### **Approve Parks & Recreation Commission Agenda for October 6, 2025**

*Motion by Commissioner Kirk to approve the October 6, 2025, meeting agenda. Seconded by Commissioner Graham. The motion passed unanimously.*

### **Approve Parks & Recreation Commission Minutes for September 2, 2025**

*Motion by Commissioner Rehlander to approve the September 2, 2025, meeting minutes. Seconded by Commissioner Schultz. The motion passed unanimously.*

### **Open Forum**

Residents Jeff and Jane Shaw, 5854 Stinson Blvd., Fridley, MN 55432, were present at the meeting to bring forth a concern regarding a neighboring property owner they report is encroaching onto the park property at Innsbruck Nature Center. They report that trees and other natural materials have been cleared, extending onto park property adjacent to 3155 Brookshire Ln., New Brighton.

Staff indicated that they would follow up with the complaint and make a determination if encroachment was occurring and if there were actions needed to address the issue.

### **New Business**

#### 1. Commons Park Site Tour

Parks and Recreation Director Mike Maher provided a tour of the Commons Park construction site and highlighted the park building, splash pad, playground, skating plaza, baseball field, pickleball courts, trails, parking areas, winter recreation area and future park pavilion sites.

*No formal action was taken by the Commission on this item.*

#### 2. Scholarship Program Report

Mr. Maher provided a verbal report on utilization of the City of Fridley's recreation scholarship program. The program allows eligible, registered individuals to receive up to \$400 in scholarships for recreation programs per calendar year. Mr. Maher reported that 2025 data as of September 25, 2025 indicated that 22 individuals had received scholarships for programs totaling \$3,653.03, which is about 60% of the amount from the full 2024 year.

Commissioner Rehlander asked which types of programs were funded through scholarships. Mr. Maher reported that about 90% of the scholarships are used for after-school programming, held at Hayes Elementary.

*No formal action was taken by the Commission on this item.*

### **Staff Reports**

#### 3. Fridley Parks and Recreation Staff Report

Mr. Maher highlighted the Parks and Recreation Department's Pumpkin Night in the Park event, held at Springbrook Nature Center to be held on Saturday, October 18<sup>th</sup>. Mr. Maher indicated that volunteer opportunities were available for community members for the event and pumpkin carving efforts the week prior to the event.

### **Unfinished Business**

None.

### **Adjournment**

*Commissioner Lune made the motion to adjourn the meeting at 7:20 p.m. Seconded by Commissioner Whalen. The motion passed unanimously.*

Respectfully submitted,

Mike Maher, Staff Liaison



# AGENDA REPORT

---

**Meeting Date:** November 3, 2025

**Meeting Type:** Parks and Recreation Commission

**Submitted By:** Mike Maher, Parks and Recreation Director

## **Title**

---

Refined Concept Plan for Flanery Park

## **Background**

---

Fridley's Park System Improvement Plan, adopted in 2022, featured a redevelopment concept plan and set of recommendations for each of Fridley's parks. Prior to park reconstruction, staff have completed a community engagement effort for each park to allow for additional public input on the concept plan and to inform selection of park amenities such as playgrounds, park shelters and athletic courts.

In the case of Flanery Park, summarized community engagement warranted a refresh of the concept plan prior to final design of construction plans. Several key factors were taken into account including additional walking loops, the location of a parking lot, keeping the skating rink intact, and maintaining several amenity upgrades in their current location to preserve mature trees, which were identified as a distinct and defining characteristic of Flanery Park.

## **Financial Impact**

---

The estimate of probable costs detailed in the Park System Improvement Plan concept ranges from \$765,000 to \$1.1 million. The estimated budget for the refined plan is \$1,055,068.66.

## **Recommendation**

---

Staff recommends that the Commission endorse the updated concept plan based on community engagement, which will be used as the basis for final construction-ready bid documents for the project.

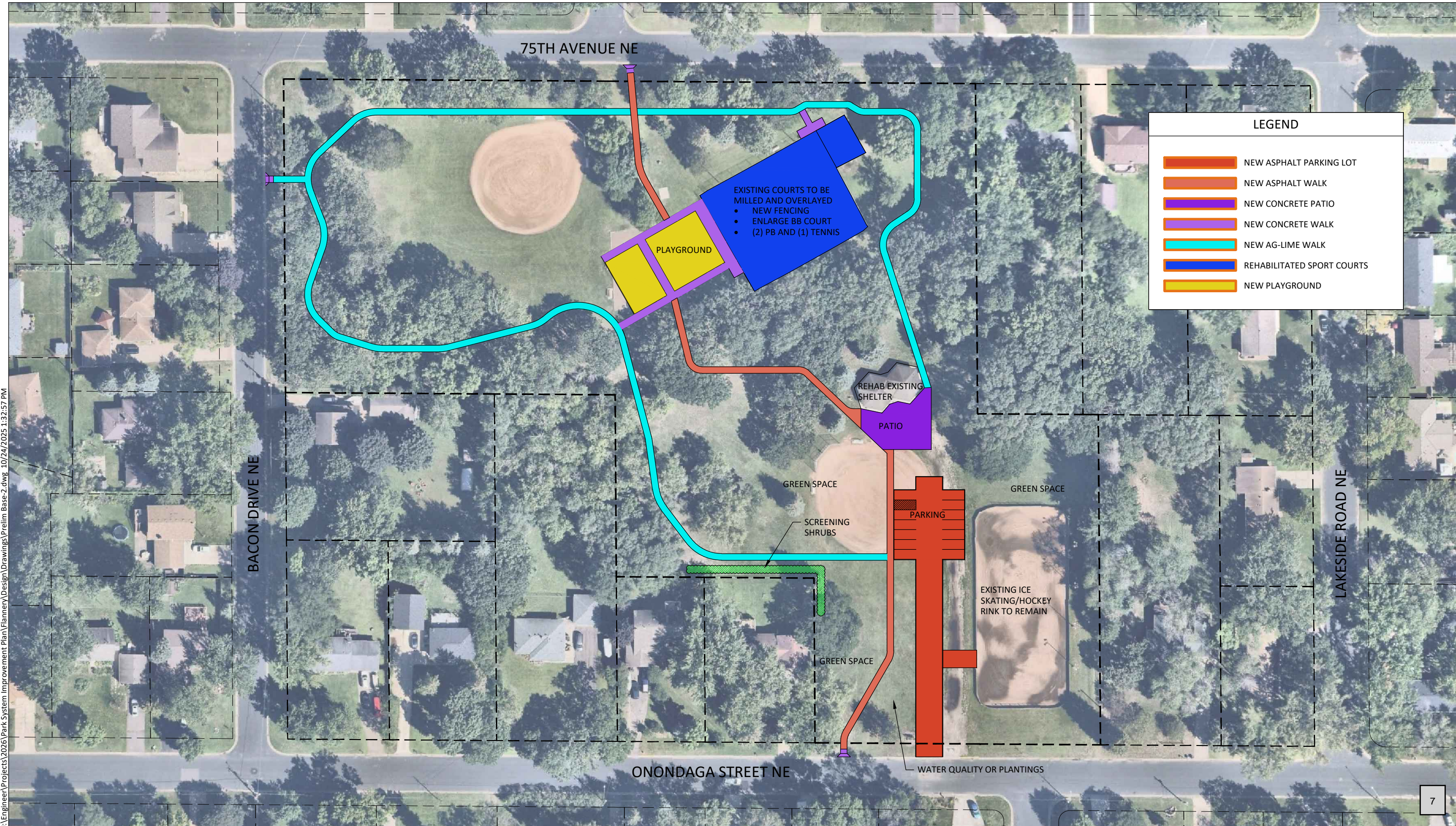
## **Attachments and Other Resources**

---

- Community Engagement Summary for Flanery Park
- Park System Improvement Plan Original Concept for Flanery Park
- Refined Concept Plan for Flanery Park

## **Vision Statement**

We believe Fridley will be a safe, vibrant, friendly and stable home for families and businesses.



I:\Engineer\Projects\2026\Park System Improvement Plan\Flannery\Design\Drawings\Prelim Base-2.dwg\_10/24/2025 1:32:57 PM

# Flanery Park

1505 ONONDAGA STREET NE

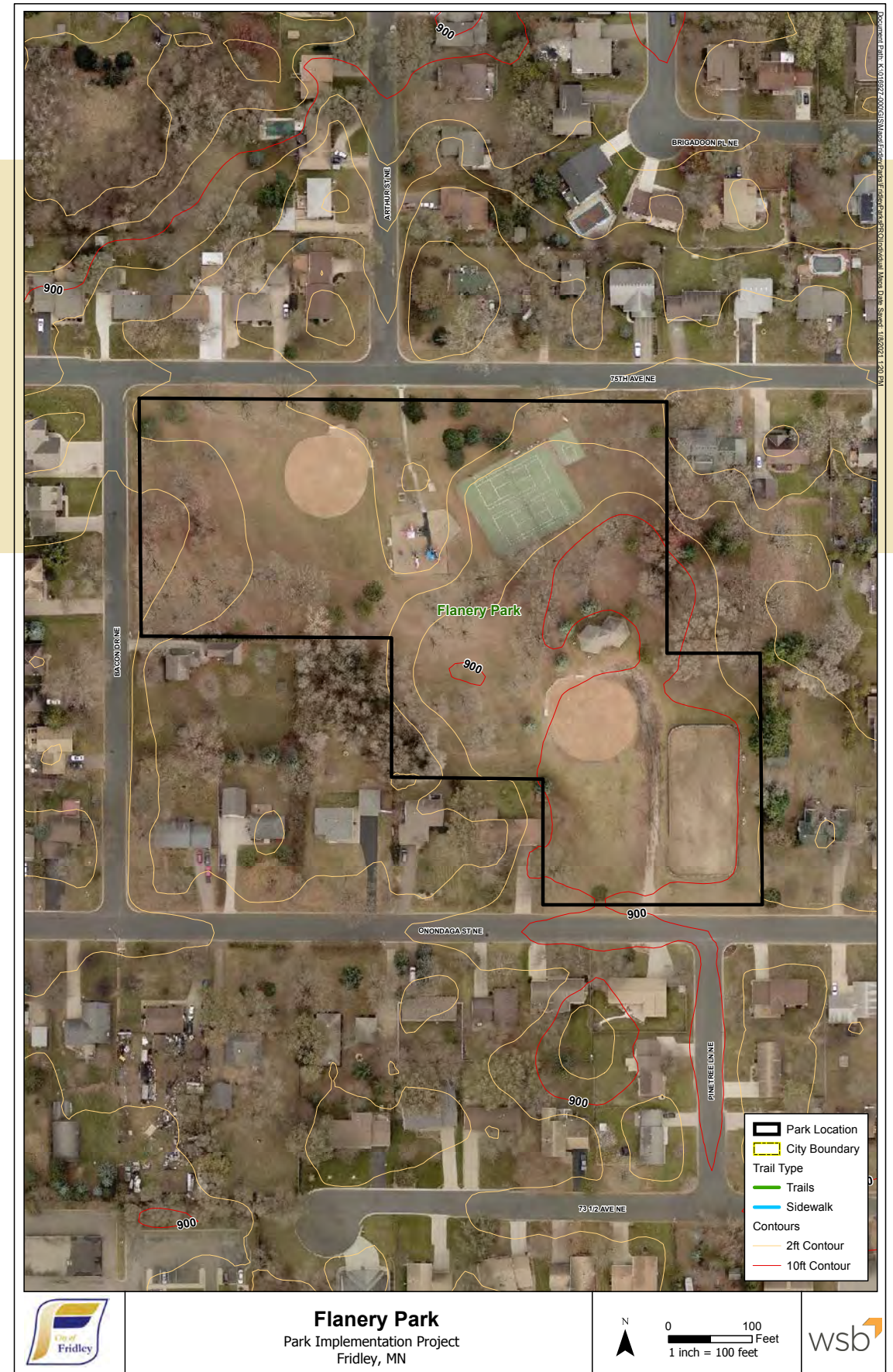
**PARK TYPE:** NEIGHBORHOOD PARK  
**SIZE:** 7.9-ACRES  
**RESIDENTS SERVED:** 1777  
**SPECIAL USES:** HOCKEY RINK

**DESCRIPTION:**  
 Neighborhood park with nice character, mature trees and a broad range of recreation amenities. Services neighborhood #8 with additional service areas of #7 and #9 with improved connections. Currently it has on-street parking, double tennis courts (poor orientation), half basketball court, two ballfields, park building with restrooms, hockey rink and pleasure skating area. Open access to skating area invites improper vehicular use of this space.



**EXISTING PARK FEATURES:**

|  |  |
|--|--|
|  |  |
|  |  |
|  |  |
|  |  |
|  |  |
|  |  |



**RECOMMENDATIONS & ESTIMATE OF PROBABLE COSTS:**

General recommendations include confirming an updated site layout with the neighborhood for an improved experience meeting a broad range of user groups.

Recommendations include:

- Removal of hockey rink (rink to remain at Madsen to service community)
- Off-street parking lot with curb and gutter for improved safety and accessibility due to larger service area (this will also help deter existing vehicular uses)
- Landscape enhancements
- Open lawn with low-grow and/or bee-friendly turf mixture
- New expanded playground meeting broader range of challenge levels and age groups with ADA compliant playground surfacing (engineered wood fiber) and rubber surfacing or tiles at primary access points and high-wear areas
- Concrete playground border
- Optional: Realign double tennis courts for N-S orientaiton
- Full size basketball court
- Park building improvements
- Site furnishings with common characteristic (benches, tables, receptacles, bike racks, drinking fountain, etc.)
- Expanded walks / trails for improved accessibility and internal loop route
- Challenge or fitness area
- Wayfinding signs
- Security light

The estimate of probable costs for completing the recommendations shown range from approximately \$765,000 to \$1.1 million.

Specific assumptions and exclusions:

- Does not account for unknown site factors (poor soils, drainage concerns, etc.)
- Assumes general budget for building improvements

**PRIORITY LEVEL:**



This neighborhood park offers a broad range of recreational amenities for multiple neighborhood service areas, and is ranked medium (Madsen is to be higher priority).

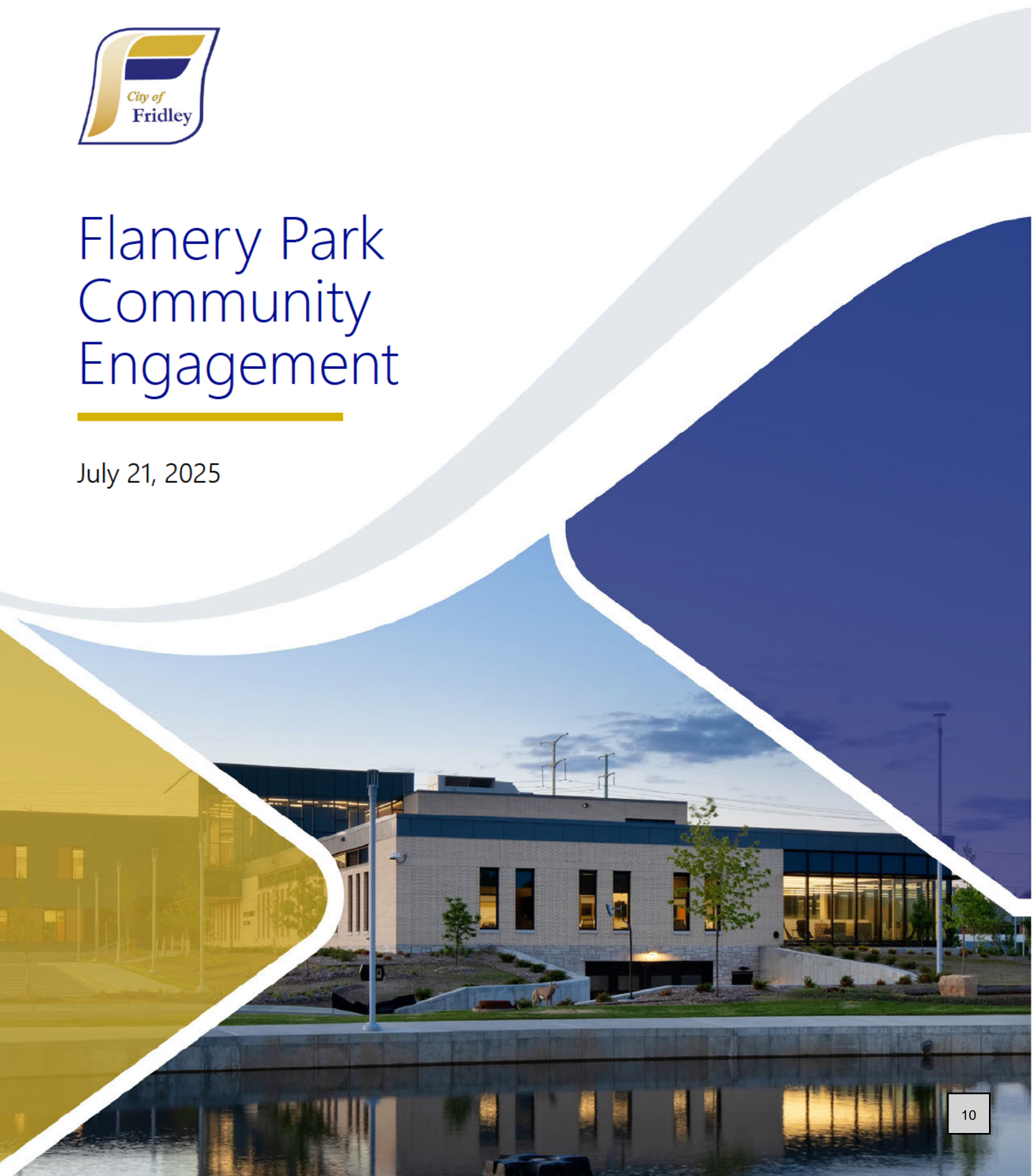




# Flanery Park Community Engagement

---

July 21, 2025





# FLANERY PARK COMMUNITY FEEDBACK – THURSDAY, JULY 10, 2025

**ATTENDANCE: 26**



## **PLAYGROUND EQUIPMENT**

- Keep the old playground. Just add the new stuff. Have two sets of equipment.
- Swinging benches for grownups.
- Fence between playground and parking lot.



- Move the full-sized basketball court where the current playground is now. This will give space between the little kid playground and space to the private homes nearby.
- More swings.
- Not enough slides.
- Move ALL sports to the north side of the street by fewer houses.
- Small sandbox for little ones.
- Strongly advise against playground moving. Where it will be moved, neighbors will hear.
- Like the plan for a full basketball court.

## **SHADE**

- More shade.
- Shade on benches near the playground.
- Shaded benches for parents and caregivers to use.

## **LANDSCAPE SCREENING/WALKING PATH**

- Have a walking path along Bacon Dr through the trees. It is so nice to leave as many trees as possible.
- Between pickleball and park building it currently floods after heavy rain. Water sits there for a few days. Improve drainage.
- Request that the landscape screening be an indigenous species. Also, bushes/hedges would be awesome to further keep the leaves from blowing into my yard.
- Landscape screening is needed around the back of the basketball court.
- Keep as many as existing trees. Possible screening between walk path and the backyards of 1991 and 1987 Onondoga. Shorter would be better to block barking dogs. Push the path out further from the yards.
- Walking trail on the west side of baseball diamond, through the oak trees.
- Trail loop along the north and west side of park also. Basically, the trail loop along all the perimeter of the park.
- Walking path meandering through the trees on the west side of park. Put the basketball court where the existing sand pit playground exists.
- Will there be screening for the houses on 75<sup>th</sup> Ave
- Keep the trees! This is the best part of that park right now. They are so old, tall and wonderful.

## **MISCELLANEOUS**

- Dog poop stations



- More parking stalls. 6-10 is not nearly enough.
- Keep the tennis court orientation as is. Do not change the fence
- Wheelchair curb needed at Bacon.
- More secure garbage cans in the park in general.
- Small parking lot seems unnecessary. There is plenty of street parking. A road to the shelter would help improve travel or moving those items closer to the road would have the same effect.
- Two votes for removing the ice rink being a mistake. There is such limited skating spaces in the area. A third vote for leaving the ice rink and the lights.
- Add a new sign on Onondaga

## **PLAYGROUND CONCEPT 1 – 41 VOTES**

- It would be nice to have a sand pit to dig in.
- Curved spinner
- Green and brown will match the surroundings better.
- Kids love slides! Obstacle course
- Zip lines. Colors blue, purple, red
- Like the more options for bigger kid age group. Like the colors.





## **PLAYGROUND CONCEPT 2 – 15 VOTES**

- If the new playground is near the parking lot, there needs to be a fence so the kids don't run into the parking lot.
- Shade. More shade is needed for benches near playground.
- Like the individual spinning options





**Summary of the community feedback and improvement suggestions for Flanery Park including both in-person and online responses**, (summary compiled with the assistance of ChatGTP):

---

## Playground Equipment

- **Equipment Requests:**
  - More **swings** and **slides**
  - **Sandpit** for young children
  - **Swinging benches** for adults
  - **Obstacle courses** and **spinning elements**
- **Separation from Residences:** Desire to **move sports courts to the north side** of the park (farther from homes).
- **Fencing:** Needed **between playground and parking lot** for child safety.
- **Strong Opposition** to relocating the playground due to **noise concerns** near private homes.

## Playground Concept Preferences

- **Concept 1 (41 votes) – Preferred**
  - Better suited for **older kids, more equipment**, better **color match with natural setting**
- **Concept 2 (15 votes)**
  - Praised for **design** and **spinners**, but seen as **too sparse**
- **Common Suggestions for Both:**
  - Add **shaded benches, more swings/slides**, and **secure garbage cans**

---

## Shade & Trees

- **High Priority:** Widespread demand for **more shaded seating**, especially near the playground.
- **Tree Preservation:** Clear message to **keep as many existing mature trees** as possible. Trees are seen as the **best feature** of the park.

---

## Walking Paths & Screening

- **Trail Requests:**



- **Perimeter walking path**, especially on the **west side** near Bacon Dr and oak trees
- **Meandering paths** preferred over direct ones
- **Landscaping & Drainage:**
  - **Screening with native species** desired (especially near homes and basketball court)
  - **Drainage improvements** needed near pickleball and park building

---

## Sports & Recreation

- **Basketball Court:**
  - Strong support for a **full court**
  - Preferred **relocation to current playground site** for better separation from homes/playground
- **Hockey Rink:**
  - Multiple comments oppose removal; valued for **year-round activity, mental health, and community use**
- **Baseball Fields:**
  - North field is used and should be maintained
  - Field underused — suggested repurposing to **soccer or green space**
- **Tennis/Pickleball:**
  - Keep as-is or reorient courts to **north-south**
  - Courts are frequently used and appreciated by all ages

---

## Park Amenities

- Requests for:
  - **Dog waste stations**
  - **More secure garbage cans**
  - **Water fountain at pavilion**
  - **ADA curb ramp at Bacon Dr**
  - **Updated park signage** (esp. on Onondaga)
- Mixed opinions on **parking:**
  - Some request **more spaces**
  - Others argue **street parking is sufficient** and oppose paving green space



---

## Winter Use

- **Ice Rink Removal Generally Opposed:**
  - Described as a **unique Minnesota asset**
  - Encourages **outdoor winter activity** and should be **retained and better maintained**

---

## General Park Design Feedback

- Emphasis on:
  - **Preserving green space**
  - Avoiding overdevelopment
  - Keeping park accessible and **neighborhood-focused**
- Suggestion to **reduce slope** between pavilion and tennis court
- Maintain **balance between natural areas and new amenities**

---

## Community Engagement Summary

Residents value the **natural character** of Flanery Park, especially the **trees, open space, and year-round usability**. They support **targeted updates** (basketball, playground, walking paths) but emphasize **careful placement** and **preservation of natural assets**. Several residents urge city staff to **minimize disruption, maximize inclusivity, and enhance what's already working**.

## Key Action Items and Questions to Resolve

- Playground option 1 was a clear favorite. What refinements are in order based on community engagement?
- A loop walking trail was a clear interest of residents.
- Is a parking lot warranted to allow the park shelter to serve the larger community through rentals? (Lot is shown in PSIP)
- Does expressed use of hockey/skating rink justify the operational and maintenance costs? (Rink not shown in PSIP – similar service area as Madsen Park)

## Online Survey Responses:

[REDACTED]  
[REDACTED]  
Flanery Park

7/26/2024

- Include water fountain at the pavilion during renovation
- Baseball fields not being used
- On street parking has not been a problem
- No concerns with a small parking lot
- Wants to maintain as many mature trees as possible
- Concerned that concept layout with pavilion and playground adjacent will make it hard for neighbors to use playground because shelter is rented out so much
- Could the slope be reduced between the pavilion and tennis court
- Hockey not used. Removal not a concern
- Does not like how the baseball field in the NW corner is sectioned off from the park by landscape screening. Since baseball is rarely used, why not redevelop it into something more useful such as soccer turf or landscaping with trails
- Neighborhood getting younger
- Would like landscape screening NE of pavilion between park and her home
- Would like to see the tennis/pickleball court reoriented to N-S

**From:** [web-recreation](#)  
**To:** [Mahe, Mike](#)  
**Subject:** FW: Flanery Park Improvement  
**Date:** Tuesday, July 1, 2025 11:51:46 AM  
**Attachments:** [image001.png](#)

---

**Margo Numedahl (she/her)**

Recreation Division Manager  
City of Fridley | Parks and Recreation Department  
Direct: 763-572-3574  
7071 University Ave. N.E., Fridley, MN 55432  
[Margo.Numedahl@FridleyMN.gov](mailto:Margo.Numedahl@FridleyMN.gov) | [FridleyMN.gov](http://FridleyMN.gov)



---

**From:** Jotform <noreply@jotform.com>  
**Sent:** Monday, June 30, 2025 4:58 PM  
**To:** web-recreation <Recreation@ci.fridley.mn.us>  
**Subject:** Re: Flanery Park Improvement



---

## Flanery Park Improvement

---

Share your feedback here.

One of the best things about Flanery Park is its year round value through its hockey rink, which my family loves to use and see used frequently in winter. It encourages outdoor activity in the winter, which is greatly beneficial for public health through increased physical exercise and exposure to sunlight, which can help alleviate symptoms of seasonal depression. The park does not recieve enough car traffic to warrant replacing this with a parking lot, as the majority of use comes from locals within walking distance. As a tax-paying citizen, I am very upset and disappointed to see that the utility of this park in winter will be significantly reduced by the proposed removal of the hockey rink. This is such an excellent and unique MN quality, and once removed, likely very hard to replace. The current proposed changes do not offer any type of replacement or plan for an alternative winter use of this park, which is a waste of this space during half of the year. I strongly oppose this part of the plan.

---

You can [edit this submission](#) and [view all your submissions](#) easily.



**From:** [Jotform](#)  
**To:** [Maier, Mike](#); [Numedahl, Margo](#)  
**Subject:** Re: Flanery Park Survey  
**Date:** Wednesday, July 16, 2025 5:03:09 PM



## Flanery Park Survey

Please provide your email for follow-up questions as needed.

[REDACTED]

Which playground option do you prefer? Option 1

What do you like about Option 1? I think it more kids/people would enjoy it than option 2.

What improvements do you suggest for Option 1? none

Please provide ideas or feedback on the draft concept development plan for Flanery Park.

I like the idea of having a walking perimeter path. Over the last 20 years, vehicle traffic and vehicle speed has increased on the surrounding streets. With the lack of sidewalks on the surrounding streets and the abundance of (street) walkers in the area, I would recommend extending the walking path to the Bacon Drive edge of the park, making it a full perimeter path. I'm not sure how concrete of a plan there is for the basketball and tennis courts. I do know that the courts have been painted/overlayed numerous times to a point that they need to be completely pulled and re-paved. I like the idea of having a full basketball court separate from the tennis/pickleball courts. With the abundance of old, large trees, I also would like more attention to cleanup of fallen branches and sticks throughout the park, as they can be a hazard for anyone playing in a grass area. The city's arborist should also evaluate the safety of several trees on the west end of the park that appear to be frail around their base.

You can [edit this submission](#) and [view all your submissions](#) easily.

**From:** [Jotform](#)  
**To:** [Maier, Mike](#); [Nuredahl, Margo](#)  
**Subject:** Re: Flanery Park Survey  
**Date:** Tuesday, July 15, 2025 4:03:17 PM



---

## Flanery Park Survey

---

Please provide your email for follow-up questions as needed. [REDACTED]

Please provide ideas or feedback on the draft concept development plan for Flanery Park.

Hello, I have concerns about the proposed placement of a paved parking lot. Can the project team instead please consider using the existing driveway and to-be-decommissioned baseball diamond as the area to place the paved parking lot? There is so much wildlife dependent on the space and so much opportunity to allow for native plant restoration right in the park. Paving the gravel areas that people are already driving on seems to make more sense than destroying existing green space that currently provides natural habitat for flora and fauna. This placement would also be closer to the picnic shelter, which was the main concern stated by the City representatives at the meeting on July 10. At a time when other cities around us are reimagining their park spaces to encourage native plants and wildlife to flourish, thereby improving air quality and soil quality, and providing better enjoyment of those green spaces, why can't we do the same here in Fridley?

---

You can [edit this submission](#) and [view all your submissions](#) easily.

From: Jotform  
To: Maher, Mike; Numedahl, Margo  
Subject: Re: Flanery Park Survey  
Date: Friday, July 11, 2025 8:32:18 AM



## Flanery Park Survey

Please provide your email for follow-up questions as needed.

[REDACTED]

Which playground option do you prefer? Option 1

What do you like about Option 1? Looks like more options for bigger kid age group!

What improvements do you suggest for Option 1? Shaded Benches for Parents and caregivers to use while there with the Children More secure Garbage cans for the park in general.

What do you like about Option 2? It has a nice artistic design that looks nice on the drawings. I do like the Colors!

What improvements do you suggest for Option 2? It looks sparse, not enough actual play items for the bigger kids.

Please provide ideas or feedback on the draft concept development plan for Flanery Park. Please move the full sized Basketball court to the space the current old Playground is now- to give some separation from the little kid playground area. I think the older kids and adults who may use i a Basketball Court would like to be farther away from all the often Happy , yet loud at play, screaming kids on the playground . Please consider to put the Loop walking trail over on the Far West side of park near the Oak trees and Bacon Drive city street. To open the Center sandy old play equipment space -to move the Basketball courts to the middle of Proposed plan, Where the old playground stuff is now> Put the Basketball court Farther away to the Private homes or the planned kiddie equipment.

You can [edit this submission](#) and [view all your submissions](#) easily.

**From:** [Jotform](#)  
**To:** [Maier, Mike](#); [Numedahl, Margo](#)  
**Subject:** Re: Flanery Park Survey  
**Date:** Thursday, July 10, 2025 9:09:14 PM



---

## Flanery Park Survey

---

Please provide your email for follow-up questions as needed.

[REDACTED]

Which playground option do you prefer? Option 1

What do you like about Option 1? All the swings and monkey bars

What improvements do you suggest for Option 1? Keep as many trees as possible

What do you like about Option 2? The colors and tire swing

What improvements do you suggest for Option 2? More swings

Please provide ideas or feedback on the draft concept development plan for Flanery Park. Keep as many trees as possible. That is the best part of the park right now...they are so old and tall and wonderful. Love the basketball court opt and the paved path

---

You can [edit this submission](#) and [view all your submissions](#) easily.

From: [Jotform](#)  
To: [Maier, Mike](#); [Nuredahl, Margo](#)  
Subject: Re: Flanery Park Survey  
Date: Thursday, July 10, 2025 7:12:13 PM



## Flanery Park Survey

Please provide your email for follow-up questions as needed.

[REDACTED]

Which playground option do you prefer? Option 1

What do you like about Option 1? More different things to try. Geared toward "bigger" kids - keeping them playing outside longer

What improvements do you suggest for Option 1? More spinning items

What do you like about Option 2? This one had more spinning and good climbing

What improvements do you suggest for Option 2? Not enough slides. Kids get bored of climbing quickly

Please provide ideas or feedback on the draft concept development plan for Flanery Park. The walking path should be through the trees on the west side of the park (near Bacon) and not as close to the backyards on the south side. Where the basketball court is proposed nice big old Oak trees exist. Why cut down gorgeous trees? My suggestion is put the basketball court where the current playground sits, between the baseball and tennis courts. That way all the sports are on the north side of the street by fewer houses.

You can [edit this submission](#) and [view all your submissions](#) easily.

**From:** [Jotform](#)  
**To:** [Maier, Mike](#); [Numedahl, Margo](#)  
**Subject:** Re: Flanery Park Survey  
**Date:** Wednesday, July 9, 2025 10:28:10 PM



## Flanery Park Survey

Please provide your email for follow-up questions as needed.



Which playground option do you prefer? Option 1

What do you like about Option 1? Physical activities look fun for the kids.

What improvements do you suggest for Option 1? Small sandbox for little ones.

What do you like about Option 2? The curved slide

Please provide ideas or feedback on the draft concept development plan for Flanery Park.

Strongly against the playground moving. Where it will be moved, neighbors will hear them.  
The walking trail should go around the whole park, not just a portion.  
Will there be screening for the other house on 75th Ave.  
Don't recommend in removing all the older trees for it provides a lot of shade.  
When the pavilion is used, it allows a lot of people to engage with the park. So, why cram all the changes in half the park, and not using the whole park.  
Other comments already provided to Mike Director of Park & Rec.

You can [edit this submission](#) and [view all your submissions](#) easily.

**From:** [Jotform](#)  
**To:** [Maier, Mike](#); [Numedahl, Margo](#)  
**Subject:** Re: Flanery Park Survey  
**Date:** Tuesday, July 8, 2025 7:15:30 PM



---

## Flanery Park Survey

---

Please provide your email for follow-up questions as needed.

[REDACTED]

Which playground option do you prefer? Option 2

What do you like about Option 1? Bit more spread out and uses more of the space.

What do you like about Option 2? Like the individual spinning options.

Please provide ideas or feedback on the draft concept development plan for Flanery Park. Removal of hockey rink is a bummer as there aren't really any other options for outdoor skating near by. Small parking lot seems unnecessary. As there is plenty of street parking. A road to the shelter would help improper travel, Or moving those items closer to the road would have the same effect.

---

You can [edit this submission](#) and [view all your submissions](#) easily.

From: [Jotform](#)  
To: [Maier, Mike](#); [Numedahl, Margo](#)  
Subject: Re: Flanery Park Survey  
Date: Tuesday, July 8, 2025 5:40:39 PM



## Flanery Park Survey

Please provide your email for follow-up questions as needed. [REDACTED]

Which playground option do you prefer? Option 1

What do you like about Option 1? Seems more suitable for a broader age range. Multiple towers and slides for make believe and obstacle courses for monkey bars and climbing. Seems like more usable equipment.

What improvements do you suggest for Option 1? I like the individual twirly thing from option 2 - this seems like a hit at Moore Lake Park. Instead of gymnast rings - maybe just the two height bars. Small slide option for smaller toddlers.

What do you like about Option 2? The jumping platforms/petals -similar to current Flanery Park. Unique architecture/design

What improvements do you suggest for Option 2? Platform space seems limited. Seems mostly like a rope course & climbing. Not a fan of rolled slides.

Please provide ideas or feedback on the draft concept development plan for Flanery Park. Removing the ice rink would be a mistake. There is such limited outdoor ice skating spaces in the community among Fridley, Mounds View, Spring Lake. Keep the ice rink.

Off street parking is not needed. There's plenty of street parking and it's a quiet neighborhood park.

New playground equipment is exciting & a full basketball court would likely get good use along with the existing pickle ball courts.

Nuetural on the rest.

You can [edit this submission](#) and [view all your submissions](#) easily.

From: [Jotform](#)  
To: [Maier, Mike](#); [Numedahl, Margo](#)  
Subject: Re: Flanery Park Survey  
Date: Friday, July 11, 2025 1:29:19 PM



## Flanery Park Survey

Please provide your email for follow-up questions as needed.

[REDACTED]

Which playground option do you prefer? Option 1

What do you like about Option 1?

opportunities for all age levels, having swings & slides are important for smaller children - playground options are more realistic for what children want & has features where children can engage & play together as well as alone. Option 2's "unique" features appear to be more directed toward "individual play" as a lot of the "unique" features are smaller/designed for only 1.

What improvements do you suggest for Option 1?

exclude the "boogie board"

What do you like about Option 2?

there is not anything to point out as a "like" for option 2

What improvements do you suggest for Option 2?

use option 1 vs option 2 - assuming these are the only two options

Please provide ideas or feedback on the draft concept development plan for Flanery Park.

1. Do NOT remove the hockey rink - instead maybe the city could actually care for it better so it could be used. Once the city floods the rink historically they have done no upkeep after. Us residents have to clear the snow build up to even try to use it.

2. Do NOT add any more basketball courts - there are plenty in all the other parks around the city which also have a better ability to accommodate the parking needs that come with the courts.

3. KEEP & improve the baseball field(s) - the little leagues and one on one coaching utilize the field on the north side frequently. The south side field is essentially inaccessible and very under maintained.

4. KEEP the tennis courts & improve them - lots of "elderly" individuals use these for tennis and a lot of younger individuals use these for pickle ball.

5. Do NOT add walks/trails - these are not typically used & there are plenty of trails all over the city that people actually use.

6. KEEP as much of the natural vegetation that is already there - the trees need to stay - they do need a good pruning though.

7. Do NOT add an area of off street parking - the 6-10 stall in the suggested document is essentially a waste of space/funds. Keeping this park smaller and less crowded is ideal for residents of the area especially when there are already larger parks already available (even really close by - ie Moore Lake park). Off street parking will only attract potential unwanted issues & will create a true need for the suggested "security light". Currently the park as is, is "safer" & does not draw unwanted "activities" especially as compared to other parks in the city.

8. Do NOT add "challenge area" - this will only go unused and will be waste of funds & space that could be natural vegetation.

---

You can [edit this submission](#) and [view all your submissions](#) easily.

**From:** [Jotform](#)  
**To:** [City of Fridley Communications Division; Maher, Mike](#)  
**Subject:** Re: Flanery Park Survey  
**Date:** Tuesday, July 8, 2025 7:50:15 AM



---

## Flanery Park Survey

---

Which playground option do you prefer? **Option 1**

What do you like about Option 1? **The tower**

Please provide ideas or feedback on the draft concept development plan for Oak Hill Park. **Like the plan for a full basketball court at Flannery Park.**

---

You can [edit this submission](#) and [view all your submissions](#) easily.

**From:** [Jotform](#)  
**To:** [City of Fridley Communications Division; Maher, Mike](#)  
**Subject:** Re: Flanery Park Survey  
**Date:** Tuesday, July 8, 2025 5:44:13 AM



## Flanery Park Survey

Which playground option do you prefer? Option 2

What do you like about Option 1? Everything it's beautiful!

What improvements do you suggest for Option 1? Nothing because both are great!

What do you like about Option 2? How open it is-

What improvements do you suggest for Option 2? It's great

Please provide ideas or feedback on the draft concept development plan for Oak Hill Park. Where is Jubilee park?? I thought this was for Flanery? Isn't Onondaga not Onondona? A new sign on Onondaga would be great maybe blocks or Bricks? Please leave the rink and the lights it is used a ton- I remember when I was a kid they would take it down but am so glad now as an adult they leave it up there is a ton of people that can leave their dogs run free supervised and lots of kids play soccer or tag In there. Just a side note I do not have either dogs or children but live across the street and love seeing people in there! Also love the lights in the winter when it's snowing.

You can [edit this submission](#) and [view all your submissions](#) easily.



# AGENDA REPORT

**Meeting Date:** November 3, 2025

**Meeting Type:** Parks and Recreation Commission

**Submitted By:** Mike Maher, Parks and Recreation Director

## Title

Proposed Park Shelter Rental and Deposit Rate Adjustment

## Background

Fees for use of park amenities such as athletic fields and park shelters are periodically reviewed to analyze recreation and use trends, cost recovery, and comparable fees from other communities. Based on use patterns and demand for staff time from Parks and Recreation, Public Works and Public Safety, staff are recommending several adjustments to rental and deposit fees as shown in the attached table.

Most notably, Locke Park Shelter 1 rental patterns have over the 2024 and 2025 seasons suggest that a higher rental deposit may help provide incentive for rental groups to adhere to rental policies. In particular, many issues were encountered including:

- Guests in excess of the specified maximum of 150 despite clear language in the rental contract
- Alcohol use despite clear prohibition in the rental contract
- Violation of noise ordinances despite clear language in the rental contract

If recommended by the Parks and Recreation Commission, updated fees would be incorporated through a change in City ordinance.

Proposed fee adjustments do not include Springbrook Nature Center or Moore Lake Park Community Building. Park facility fees will be reviewed during the process of developing Commons Park rental fees for approval by Council.

## Financial Impact

Rental fee increases of approximately 20% are being recommended by staff as well as increases in the fully refundable rental deposits. Deposit fees may be held when policies are clearly violated and should serve as a deterrent for policy violation. Rental fee adjustments are in line with neighboring communities and reflect increasing administrative costs as well as credit card processing costs.

## Recommendation

Staff recommend approval of the proposed fee increases shown in the attached table.

## Vision Statement

We believe Fridley will be a safe, vibrant, friendly and stable home for families and businesses.

**Attachments and Other Resources**

---

- Table showing current and proposed park shelter fees and deposits.

**Vision Statement**

We believe Fridley will be a safe, vibrant, friendly and stable home for families and businesses.

(4) Park Facility Rental Fees (Fees last adjusted by Ordinance 1420 on 3/11/2024)

| Park/Facility   | Resident/Non-Profit  | Non-Resident  | Rental Deposit                 |
|---|--|---|--------------------------------|
| Open-air shelters with 50 guest maximum<br>Flanery, Locke # 2, Moore Lake Pavilions | <del>\$80</del> \$100 plus tax                               | <del>\$120</del> \$150 plus tax                                 | <del>\$50</del> \$100 proposed |
| Special Use Permit  | \$265 plus tax   | \$450 plus tax  | \$50                           |
| Locke Park Pavilion #1 (150 person capacity)  | <del>\$170</del> \$200 plus tax<br>proposed                  | <del>\$250</del> \$300 plus tax<br>proposed                     | <del>\$50</del> \$200 proposed |
| Moore Lake Community Building, half day rental                                      | \$150 plus tax on weekdays<br><br>\$250 plus tax on weekends | \$225 plus tax on weekdays<br><br>\$400 plus tax on weekends    | \$200                          |
| Moore Lake Community Building, full day rental                                      | \$225 plus tax on weekdays<br><br>\$375 plus tax on weekends | \$337.50 plus tax on weekdays<br><br>\$600 plus tax on weekends | \$200                          |
| Moore Lake Community Building, building monitor                                     | \$25 per hour  | \$25 per hour   |                                |



# AGENDA REPORT

---

**Meeting Date:** November 3, 2025

**Meeting Type:** Parks and Recreation Commission

**Submitted By:** Mike Maher, Parks and Recreation Director

## **Title**

---

Revised 2026 Meeting Schedule

## **Background**

---

The Parks and Recreation Commission reviewed and approved a slate of meeting dates for 2026 at the August 4, 2025 meeting. Since the approval of those dates, times, and locations, a conflict was discovered for the January 5<sup>th</sup>, 2026 meeting. A City Council meeting will be held that evening. A proposed updated schedule, which keeps the regular first Monday of the month meeting cadence for the Parks and Recreation Commission is presented for consideration. The only change from the previously approved schedule is moving the Monday, January 5<sup>th</sup> 2026 meeting to Springbrook Nature Center, 100 85<sup>th</sup> Ave. NE. Fridley, MN 55432 rather than Fridley City Hall.

## **Financial Impact**

---

None.

## **Recommendation**

---

Staff recommends that the Commission approve the proposed 2026 meeting schedule.

## **Attachments and Other Resources**

---

- Proposed Revised 2026 Meeting Dates of the Parks and Recreation Commission

## **Vision Statement**

We believe Fridley will be a safe, vibrant, friendly and stable home for families and businesses.



## Fridley Civic Campus

7071 University Ave N.E. Fridley, MN 55432  
763-571-3450 | FAX: 763-571-1287 | FridleyMN.gov

# Park and Recreation Commission 2026 Meeting Schedule

**Unless Indicated Otherwise, Meetings are the first Monday of each month  
at 7 pm in City Council Chambers (2<sup>nd</sup> floor)**

Monday, January 5, 2026 (Location: Springbrook Nature Center\*)

Monday, February 2, 2026

Monday, March 2, 2026

Monday, April 6, 2026

Monday, May 4, 2026

Monday, June 1, 2026 (Work Session at Park Location TBA)

### **July 2026 - NO MEETING**

Monday, August 3, 2026

**Tuesday**, September 8, 2026 (shifted one day due to Labor Day)

Monday, October 5, 2026

Monday, November 2, 2026

Monday, December 7, 2026

Revised. 10/24/2025

\*Springbrook Nature Center, 100 85<sup>th</sup> Ave. NE., Fridley, MN 55432



# AGENDA REPORT

---

**Meeting Date:** November 3, 2025

**Meeting Type:** Parks and Recreation Commission

**Submitted By:** Mike Maher, Parks and Recreation Director

## **Title**

---

Fridley Parks and Recreation Staff Report

## **Background**

---

Attached is the update from the Fridley Parks and Recreation Staff for the November 3, 2025 Parks and Recreation Commission meeting.

## **Financial Impact**

---

None.

## **Recommendation**

---

None.

## **Attachments and Other Resources**

---

- Attached is the update from the Fridley Parks and Recreation Staff for the November 3, 2025 Parks and Recreation Commission meeting.

### **Vision Statement**

We believe Fridley will be a safe, vibrant, friendly and stable home for families and businesses.

# STAFF REPORT

## Recreation Team: October 2025

### Fall Programs

Below is a list of programs and participation numbers for those that took place in October.

| All Ages                       |    |
|--------------------------------|----|
| Folk Art Blackbird: Fabric Art | 8  |
| Preschool: Ages 3-5            |    |
| Soccer (6 sessions): Sep-Oct   | 16 |

### Elementary – Middle School: Grades K-6

|   |    |
|---|----|
| Soccer (6 sessions): Sep-Oct  | 15 |
| Tae Kwon Do (6 sessions): Sep-Oct   | 16 |
| Outdoor Games & Halloween Fun (6 sessions): Sep-Oct                                   | 15 |
| Field Trip: Zero Gravity & Pumpkin Carving: Oct 16<br>Friday: 11; Spring Lake Park: 4 | 15 |

### Adult Fitness and Athletics

|   |          |
|---|----------|
| Zumba (2 classes/6 sessions each): Sep-Oct                    | 15       |
| Pickleball for Beginners: Sep-Oct<br>F=5, SLP=3               | 8        |
| Pickleball Ladder League All Ages: Oct – Dec<br>F=22, SLP=23  | 45       |
| Pickleball Ladder League Ages 20-40: Oct - Dec<br>F=18, SLP=6 | 24       |
| Volleyball Coed Rec: Sep-Nov*                                 | 14 teams |
| Volleyball Coed Comp: Sep-Nov*                                | 15 teams |
| Volleyball Women's Comp: Sep-Nov*                             | 14 teams |
| Bag Toss League Co-ed*  |          |

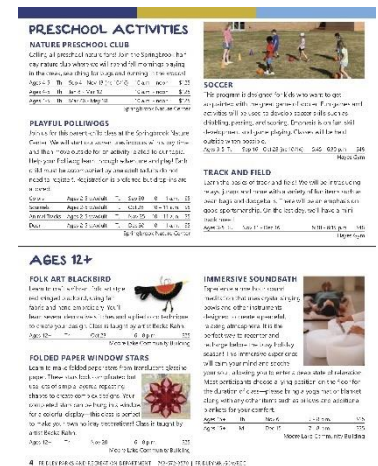
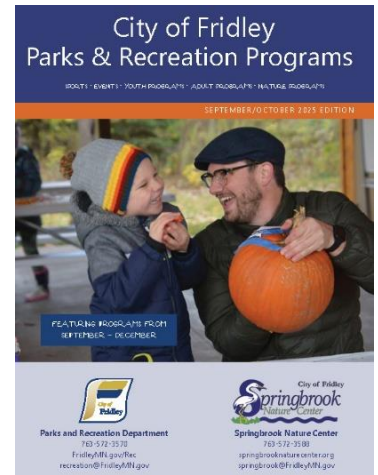
\*North Metro Leagues are offered in cooperation with Mounds View, New Brighton, and Spring Lake Park.

### Parks and Recreation Brochure

The Nov/Dec brochure is finalized and mailed to residents beginning on October 27.

### October Facility Rentals

| Facility                      | Reservations |
|-------------------------------|--------------|
| Moore Lake Community Building | 8            |
| Locke Park Shelter #1         | 3            |
| Flanery Park Shelter          | 1            |
| Community Park Fields         | 56 hours     |



## Moore Lake Community Building Solar Panel Installation

The Moore Lake Community Building was closed for the first two weeks of October for solar panel installation. Solar panels were installed covering the roof on the open-air portion of the building. This project was grant funded.

## Pickleball Classes

Pickleball Skills and Drills class began in October. This Class is designed to for participants who are relatively new to pickleball and are looking to improve their skills. Classes have moved indoors to the Hayes Elementary School Gym on Saturday mornings from 8 – 10 a.m.

## Pickleball Leagues

The Pickleball Ladder leagues began on Monday and Wednesday nights at the Hayes Elementary School Gym. The leagues will run through December.

## After-school Program

Our first session of after-school classes of the school year is complete! Kids enjoyed Soccer, Tae Kwon Do, and Outdoor Games & Halloween Fun. On the last day of Halloween Fun, we held a festive Halloween party for the kids that was a hit! We look forward to the next session of classes that starts on November 11.



## Staff Hiring

We completed hiring for our school year programs and are in process of onboarding six new staff. We should be fully staffed until summer.

## Halloween Tour

Based off our annual winter lights tour, we created our first annual Halloween Tour for Fridley residents to be able to share their festive Halloween decorations. A total of 16 residents entered this year's tour and positive feedback has been received from residents. We hope the program grows next year and are sure folks will enjoy the spooky, fall tour!

## Field Trip for Grades K-5

In partnership with Spring Lake Park Recreation, we took 16 kids on our annual fall trip to Zero Gravity Trampoline Park. After having a blast jumping and playing laser tag, we returned to the Hayes Gym to carve pumpkins! Carved pumpkins were brought to Springbrook Nature Center to be placed on the trails as part of Pumpkin Night in the Park. Many kids returned to Pumpkin Night to try and find their pumpkin!



## Pumpkin Night in the Park

The Recreation team supported Springbrook Nature Center assisting in the coordination of pumpkin gutting and carving. In addition, staff coordinated the shuttle and supported the set-up, event duties, and clean-up. All regular full time staff and ten seasonal staff worked to support this year's event.

## MRPA Conference

The Minnesota Recreation and Parks Association annual conference took place on October 27 – 30 at the Heritage Center of Brooklyn Center. All full-time staff attended to learn about current trends in the field, increase skills and knowledge, and network with the 450 other professionals from across Minnesota.

In addition to attending, Recreation Coordinator Brice Richter participated on the conference planning committee assisting with the exhibit hall. He helped to organize exhibitors and developed an event bingo card to encourage conference goers to interact with exhibitors.

## Upcoming Events and Programs

- November 1: Houseplant Swap (Free)
- November 1: Pickleball Court Rentals Begin (reservation required - \$15/hr)
- November 6 & December 15: Immersive Soundbath Class (registration required - \$25)
- November 5: Winter Lights Registration Opens (Free)
- November 8: Family Open Gym Begins, Saturdays from 10:15 a.m. – 12:15 p.m. (\$3-6)
- November 11: After-school and Preschool classes begin (registration required)
- November 20: Folded Paper Stars Art Class (registration required - \$25)
- November 22: Turkey Bingo (registration required - Free)
- December 22 & 30 - Winter Field Trips for grades K-5 (registration required - \$65)
- February 7: Winterfest (Free)

## Springbrook Nature Center Team

### September & October Education Programs

It's been a busy start to the school year. The leaves are changing the weather is starting to cool, and lots of people are participating in educational programs at Springbrook!

**Number of Youth Program Participants: 1,625**

**Number of Hours of Youth Programming: 2,385**

### September & October Rentals & Birthday Parties

|  |    |
|--|----|
| September & October Birthday Parties     | 14 |
| September & October Indoor Room Rentals  | 12 |
| September & October Amphitheater rentals | 2  |

### Grants

- Project Feederwatch will begin in November and run through March. If you are interested in helping with community science efforts, please attend our upcoming training on Sunday, October 26 from 10 am - 11 am.

### Park & Building Maintenance

- We are still waiting to hear when our trails will begin to be resurfaced (we're hoping for late fall/early winter).
- No word yet on when the bike trail bridges will be reconstructed. There have been delays in the process. There is money in the CIP budget to complete the project this year - but it may be rolled over into 2026.

### Upcoming Events

Project Feederwatch Training - Sunday October 26 from 10 -11 am

Fall Slow Down Womens' Hike - Sunday November 2 from 10-11:30 am

Coffee Chat with a Naturalist - Wednesday November 5 from 10:30 - 11:30 (FREE)

### Pumpkin Night in the Park Recap

Pumpkin Night in the Park was a massive success. We had over 900 volunteers signed up to help carve 1,300 pumpkins for this year's event. The crowds came out for this year's Pumpkin Night in the Park. We sold over 2,800 online tickets and nearly 200 paper tickets ahead of the event. Guests were treated to a great DJ from KidsDance, outstanding performances from multiple actors on the trail portraying pirates, crocodiles, Peter Pan and the Lost Boys, and Embrace the Light showed up with a wonderfully themed Jackson O Lantern and his mystical creatures show that delighted thousands. Another big night - thanks to the SNC Foundation and their participation and sponsorship of the event!

