



Parks and Recreation Commission Meeting

February 2, 2026 at 7 p.m.
Fridley Civic Campus, 7071 University Avenue NE

Agenda

Call to Order

Roll Call

Approval of Meeting Minutes

1. January 5, 2026 Parks and Recreation Commission Minutes

Approval of Agenda

Open Forum

The Open Forum allows the public to address the Council on subjects that are not on the Regular Agenda. The Council may take action, reply, or give direction to staff. Please limit your comments to five minutes or less.

New Business

2. Pickleball Program Guidelines
3. Election of Vice Chair
4. Updated Park System Improvement Plan Implementation Schedule

Old Business

Staff Reports

5. Fridley Parks and Recreation Staff Report

Adjournment

Accessibility Notice:

- If you need free interpretation or translation assistance, please contact City staff.
- Si necesita ayuda de interpretación o traducción gratis, comuníquese con el personal de la ciudad.
- Yog tias koj xav tau kev pab txhais lus los sis txhais ntaub ntawv dawb, ces thov tiv tauj rau Lub Nroog cove neeg ua hauj lwm.
- Haddii aad u baahan tahay tarjumaad bilaash ah ama kaalmo tarjumaad, fadlan la xiriir shaqaalaha Magaalada.

Upon request, accommodation will be provided to allow individuals with disabilities to participate in any City of Fridley services, programs or activities. Hearing impaired persons who need an interpreter or other persons who

require auxiliary aids should contact CityClerk@FridleyMN.gov or (763) 572-3450.

AGENDA REPORT



Meeting Date: February 2, 2026
Meeting Type: Parks and Recreation Commission
Submitted By: Mike Maher, Parks and Recreation Director
Title: January 5, 2026 Parks and Recreation Commission Minutes

Background

Attached are the meeting minutes of the January 5, 2026 Parks and Recreation Commission.

Recommendation

Staff recommends approval of the January 5, 2026 Parks and Recreation Commission minutes.

Attachments and Other Resources

-
1. PK 1-05-2026

Vision Statement

We believe Fridley will be a safe, vibrant, friendly, and stable home for families and businesses.



Park Commission Meeting

January 5, 2026

7:00 PM

Springbrook Nature Center, 100 85th Ave. NE, Fridley

Minutes

Call to Order

Chair Borman called the Parks and Recreation Commission meeting to order at 7:00 p.m.

Present

Riley Auna
Peter Borman
EB Graham
Melissa Luna
Jodi Rehlander
Ken Schultz
Don Whalen

Absent

Tim Kirk
Jodi Rehlander

Also Present

Mike Maher, Parks and Recreation Director
Katy Dahl, Program Coordinator, Springbrook Nature Center

Approve Parks & Recreation Commission Agenda for January 5, 2026

Motion by Commissioner Graham to approve the January 5, 2025, meeting agenda. Seconded by Commissioner Luna. The motion passed unanimously.

1. Approve Parks & Recreation Commission Minutes for December 1, 2025

Motion by Commissioner Graham to approve the December 1, 2025, meeting minutes. Seconded by Commissioner Luna. The motion passed unanimously.

New Business

2. Election of Vice Chair

The Commission briefly discussed the Vice Chair position, currently held by Commissioner Graham. Since several Commissioners were not present at the meeting, the group decided to move this item to the February 2nd meeting.

No formal action taken.

3. 2026 Springbrook Nature Center Program Review

Springbrook Nature Center Coordinator Katy Dahl presented an overview of planned 2026 programming. This includes special events, day camps, school field trips and a variety of other programs.

4. Commons Park Sculpture Project Update

Parks and Recreation Director Mike Maher presented an update to the Commission on a public art sculpture project that is underway as part of the Commons Park improvement project. The sculpture process is being guided by the Fridley Public Arts Commission and is being funded by the non-profit Fridley Creative Arts Foundation. Artist Ken McCall is creating the sculpture and staff are coordinating details to facilitate installation for the park grand opening to be held July 18th. Additional community engagement efforts are being planned to use the sculpture as an opportunity to celebrate the artwork themes of unity, diversity, water and nature.

No formal action taken.

5. 2026 Workplan

Parks and Recreation Director Mike Maher presented an overview of a 2026 workplan document for the Parks and Recreation Commission.

No formal action taken.

Old Business

FYSA Report

Riley Auna joined the Commission for his first meeting since being appointed by the Fridley City Council to represent the Fridley Youth Sports Association as an ex-officio Commission member. Mr. Auna reported that currently youth basketball is active during the winter months. Around 150 kids in grades 2-8 are enrolled in the program. There is a planned clinic to introduce K-1 age kids to basketball and learn basic skills. Mr. Auna acknowledged that one challenge for the group would be soccer fields for the upcoming year with some planned improvements to Community Park impacting field space. Typically, soccer enrollment has been higher at around 165 kids and the fall season has been around 95 kids. The group encourages volunteers to step forward to coach teams. Mr. Auna is looking forward to contributing to the Commission.

Staff Reports

6. Fridley Parks and Recreation Staff Report

Mr. Maher provided an overview of the written report, highlighting recent events, upcoming programming activities and events, and updates on park improvement projects.

Adjournment

Commissioner Luna made the motion to adjourn the meeting at 8:30 p.m. Seconded by Commissioner Graham. The motion passed unanimously.

Respectfully submitted,

Mike Maher, Staff Liaison

AGENDA REPORT



Meeting Date: February 2, 2026
Meeting Type: Parks and Recreation Commission
Submitted By: Mike Maher, Parks and Recreation Director
Title: Pickleball Program Guidelines

Background

The City of Fridley completed a comprehensive park system improvement plan in 2022 to guide future development of the park system. One notable feature of the plan is the addition of pickleball courts to a number of city parks.

Pickleball is among the fastest growing sports in the United States and at the time of the development of the Park System Improvement Plan, no dedicated courts were located within the City of Fridley. Several tennis courts had been retrofitted to allow for both tennis and pickleball to be played on the court.

Demand for additional courts was factored into the system plan and ongoing community engagement completed prior to park construction identified the need for additional dedicated courts in the city park system.

With the addition of a large, six-court, pickleball complex at Commons Park, scheduled to open summer of 2026, staff recommend a more structured approach to planning the utilization of courts across the park system. The larger court complex may require specific guidelines and regulations for successful operations based on best practices observed in other communities with similar amenities.

Brice Richter, Recreation Coordinator, will be present to share plans and gather input on operations of the new six-court pickleball complex set to open at Commons Park in June 2026.

Recommendation

Attachments and Other Resources

1. Pickleball Program Overview for February 2026 Parks and Recreation Commission Meeting

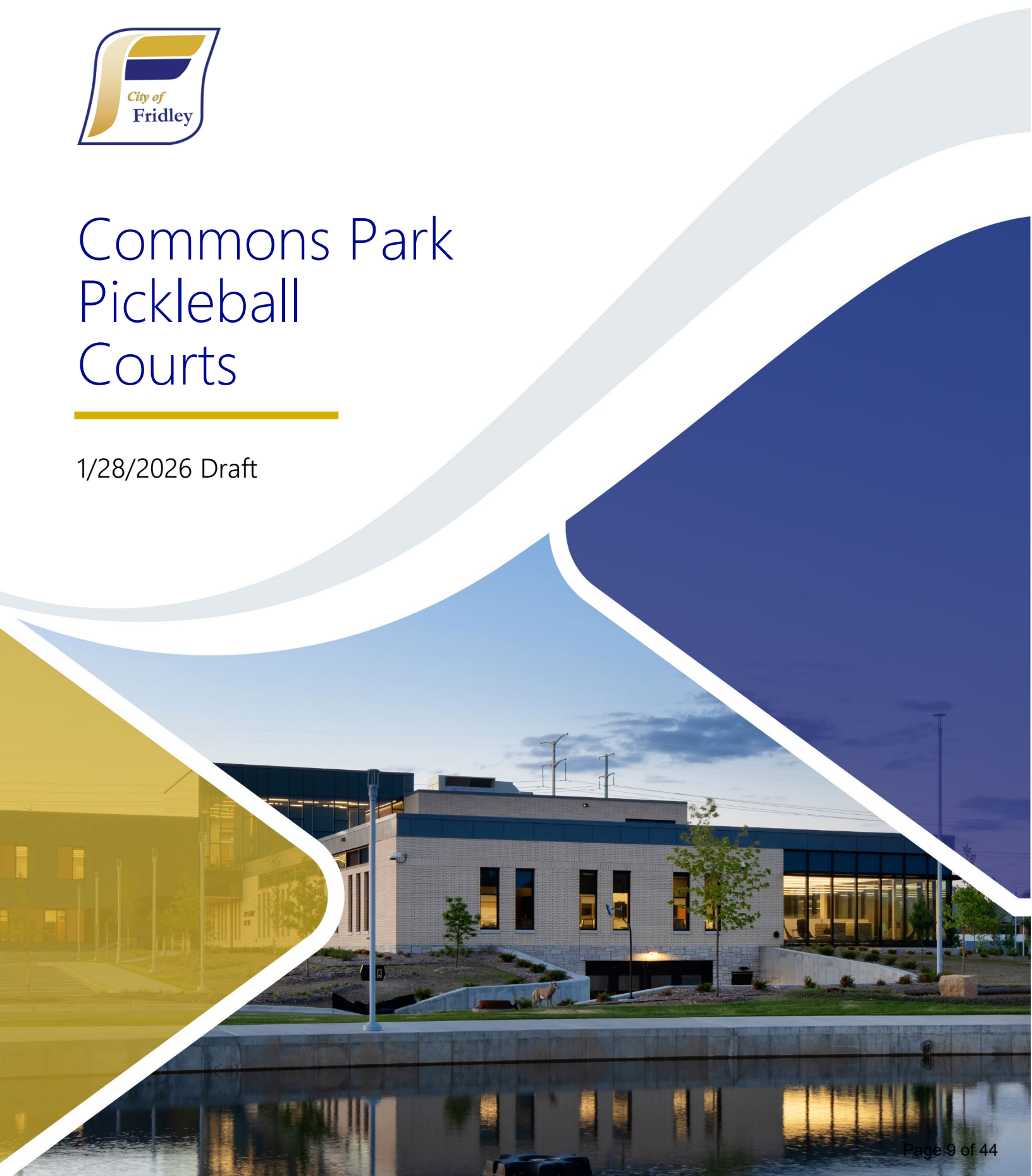
Vision Statement

We believe Fridley will be a safe, vibrant, friendly, and stable home for families and businesses.



Commons Park Pickleball Courts

1/28/2026 Draft





Commons Park Pickleball Courts

Background

The City of Fridley completed a comprehensive park system improvement plan in 2022 to guide future development of the park system. One notable feature of the plan is the addition of pickleball courts to several city parks.

Pickleball is among the fastest growing sports in the United States and at the time of the development of the Park System Improvement Plan, no dedicated courts were located within the City of Fridley. Several tennis courts had been retrofitted to allow for both tennis and pickleball to be played on the court.

Demand for additional courts was factored into the system plan and ongoing community engagement completed prior to park construction identified the need for additional dedicated courts in the city park system.

With the addition of a large, six-court, pickleball complex at Commons Park, scheduled to open summer of 2026, staff recommend a more structured approach to planning the utilization of courts across the park system. The larger court complex may require specific guidelines and regulations for successful operations based on best practices observed in other communities with similar amenities.

Types of Court Usage

Reserved Program Time

Scheduled time for recreation programming:

- Includes instructor-led classes, clinics, leagues, and tournaments scheduled and organized by the Recreation Division. Primarily adult (18+) programming.
- May also include time set aside for the ROCKS day camp and other youth programs.
- 14% of total time courts are available dedicated to Programs.

Structured Open Play

Pickleball open play is a social way to play and enables players of a wide skill level to join games and use courts in a structured and organized manner.

- During structured open play hours while all courts are in use, open play rules will come into effect.
- Structured open play policy ensures players can access the courts by mixing in with other players in a queue, using a pickleball paddle rack to hold their place.
- This system promotes a social and fair way to ensure players at the court during structured open play have access to the courts.



Commons Park Pickleball Courts

- This time is for players of a wide skill level but is best suited for players who have some understanding of pickleball rules and the structure of an open play system.
- Structured open play will only apply to the courts at Commons Park.
- 24% of total time courts are available

First Come First Served Court Time

Typical first come first serve play.

- Courts are available on a first come first serve basis when Programs and Structured open play are not in effect.
- Structured open play rules do not apply at this time.
- Players have a one-hour time limit per court to allow other players the opportunity to use courts.
- This availability of the courts appeals to less serious players who may not be interested in the structured open play, families or groups looking to try pickleball for the first time or only play with their group, and more skilled players who are not compatible with the level of play seen at structured open play.
- 62% of total time courts are available

Pickleball Program Schedule at Commons Park Pickleball Courts

Programming Schedule

- Monday
 - Pickleball 20 – 40 League 6 – 9 p.m.
 - 3 Courts
 - Pickleball Classes 6 – 8 p.m.
 - 3 Courts
- Tuesday
 - Competitive DUPR League with Minnesota Pickleball 18+ 6 – 9 p.m.
 - 6 Courts
- Wednesday
 - All Ages League 6 – 9 p.m.
 - 6 Courts
- Thursday
 - All Ages League 10 a.m. – noon
 - 6 Courts

Program Types

- Pickleball Ladder Leagues
 - Ladder Leagues on Monday/Wednesday nights and Thursday mornings are fully operated by the Recreation Division where we calculate players' win



Commons Park Pickleball Courts

- percentage with the intention of placing them in doubles games with players of a similar skill level. This encourages a social and even playing field for players of all skill levels and is our most popular pickleball program.
- New this summer is a Competitive DUPR Pickleball Ladder Leagues in partnership with Minnesota Pickleball.
 - DUPR is a rating system that ranks players skill level based on their play and the DUPR level of their opponents.
 - While DUPR itself doesn't necessarily exist to promote more competitive play, with our new facility, we are able to offer programs for players looking for a slightly more competitive environment. DUPR helps enable this more competitive play remains fair and even.
 - Pickleball Classes and Clinics
 - We offer three different types of pickleball classes accommodating beginner – advanced skill levels.
 - Classes run four weeks with one class per week. Each class is two hours.
 - Clinics are typically one or two-day sessions that cater towards beginner players with the intention of offering a smaller sample without the larger time commitment classes pose.
 - Classes and clinics are taught by professional pickleball instructor Will Davison.
 - Pickleball Tournaments
 - Our first pickleball tournament will be an MRPA-sanctioned pickleball tournament in partnership with Minnesota Pickleball and will be hosted during the Fridley 49er Days Festival.
 - Sanctioned pickleball tournaments qualify winners for state tournaments.
 - The tournament will be a mixed double (COED) tournament with two age groups 18 – 49 & 50+ hosting as many as 100 players.

Structured Open Play

Paddle Rack/Next Up

- Pickleball paddle rack rotation system uses a queue to fairly determine who plays on what court and when.
- This paddle rack is only necessary when all courts are in use and there are additional players waiting to utilize the courts.
- Players use paddles placed in the paddle rack to enter a queue of players which determines what court and what order you play in with who.
- Welcoming to pairs, small groups, and individuals.



Commons Park Pickleball Courts

- This format of pickleball open play is used in nearby cities with success. The following cities were used as reference to determine Structured Open Play rules as well as our pickleball instructor Will Davison and Luke Jesso of Minnesota Pickleball. Coon Rapids, Brooklyn Park, Blaine. Coon Rapids, Brooklyn Park and Blaine all have facilities with six pickleball courts like at Commons Park.
- Example image of a six-court next up pickleball rack system:



- Each color and four paddle openings represent one court.
- The up next and orange slides indicate which group will play next.

Play Structure/Rules signage draft

The following are the suggested rules for the Commons Park Pickleball Courts using the Next Up pickleball paddle system.

Open Play:

Rules apply during open play hours when all courts are full, and players are in the queue:

- Standard pickleball rules apply (per USA Pickleball).
- Only doubles pickleball will be permitted when possible.
- One game limit. Games are to 11, win by 2
- Players must place their paddles on the paddle rake to indicate they are ready to play. All groups must rotate.
- Paddles can be placed in the rack, in any open slot, in any order, behind other placed paddles in the playing queue.
- When the game is finished, players will leave the court promptly.
- A group with 4 players cannot skip in front of a partially filled group in front of them.
- All skill levels will mix into play. There are no higher skilled or lower skill courts.
- When unsure on a call, the benefit of the doubt goes to your opponent.



Commons Park Pickleball Courts

- All groups must rotate.
- Be respectful and inclusive.

Dedicated Open Play Hours: TBD

First Come First Served Play:

Time outside of scheduled program hours and dedicated open play is first come first served. One hour time limit per court.

QR Code to Pickleball Webpage

Dedicated Pickleball Webpage

- Court Policy and Rules (Same as official policy and rules listed above)
- Dedicated Court Locations in Fridley
 - Commons Park (opening 2026)
 - Flanery Park (opening 2026)
 - Edgewater Gardens
 - Moore Lake Park
 - Plymouth Square Park
- Tennis/Pickleball Courts in Fridley
 - Creekridge Park
 - Craig Park
- Open Play schedule at Commons Park
 - Monday: 8 a.m. - noon
 - Tuesday: 8 a.m. - noon
 - Wednesday: 8 a.m. - noon
 - Thursday: 6 – 9 p.m.
 - Friday: 6 – 9 p.m.
 - Saturday: 8 a.m. - noon
 - Sunday: None
- Program Schedule
- Report damage to court
- Link to register for programs and information

All Fridley Pickleball Courts are open to First Come First Served Play when Programs and Scheduled Open Play are not taking place. We ask that players limit their court use to one-hour when others are waiting to use the courts.

AGENDA REPORT



Meeting Date: February 2, 2026
Meeting Type: Parks and Recreation Commission
Submitted By: Mike Maher, Parks and Recreation Director
Title: Election of Vice Chair

Background

Per Fridley code 105.02, each commission shall annually elect a vice chairperson. At any meeting of the commission if the chairperson is unable to attend, the vice chairperson shall act as the chairperson. This Commission considered this item at their January 5, 2026 meeting and agreed to present it again at the February meeting as several Commissioners were not present.

Recommendation

Staff recommends the Commission accepts nominations for the chairperson role and vote on any nominated individuals to elect a vice chair for 2026.

Attachments and Other Resources

Vision Statement

We believe Fridley will be a safe, vibrant, friendly, and stable home for families and businesses.

AGENDA REPORT



Meeting Date: February 2, 2026
Meeting Type: Parks and Recreation Commission
Submitted By: Mike Maher, Parks and Recreation Director
Title: Updated Park System Improvement Plan Implementation Schedule

Background

The Park System Improvement Plan, approved in 2022, provided recommendation to modernize each of Fridley’s parks. Funding was secured to implement a slate of high priority improvements to many parks. The original schedule for park improvements ranged from 2022 to 2030. Considering the relatively high rate of cost increases that have been experienced during the first few years of plan implementation, staff are recommending an accelerated implementation schedule to complete more improvements at a lower cost.

Proposed implementation is as follows:

- 2026 Commons Park
- 2026 Flanery Park
- 2026 Summit Square Park
- 2027 Briardale Park
- 2027 Hackmann Circle Park
- 2027 Harris Lake Park
- 2027 Madsen Park
- 2027 Ruth Circle Park
- 2028 Creekridge Park
- 2028 Innsbruck Park
- 2028 Jay Park
- 2028 Terrace Park

Recommendation

Financial Impact: \$30 million was approved by the Fridley City Council for park improvements as part of the Park System Improvement Plan. Staff have successfully applied for a number of grants to supplement park improvements. By accelerating the schedule, equipment and labor costs can be secured at lower prices, maximizing the impact of the plan.

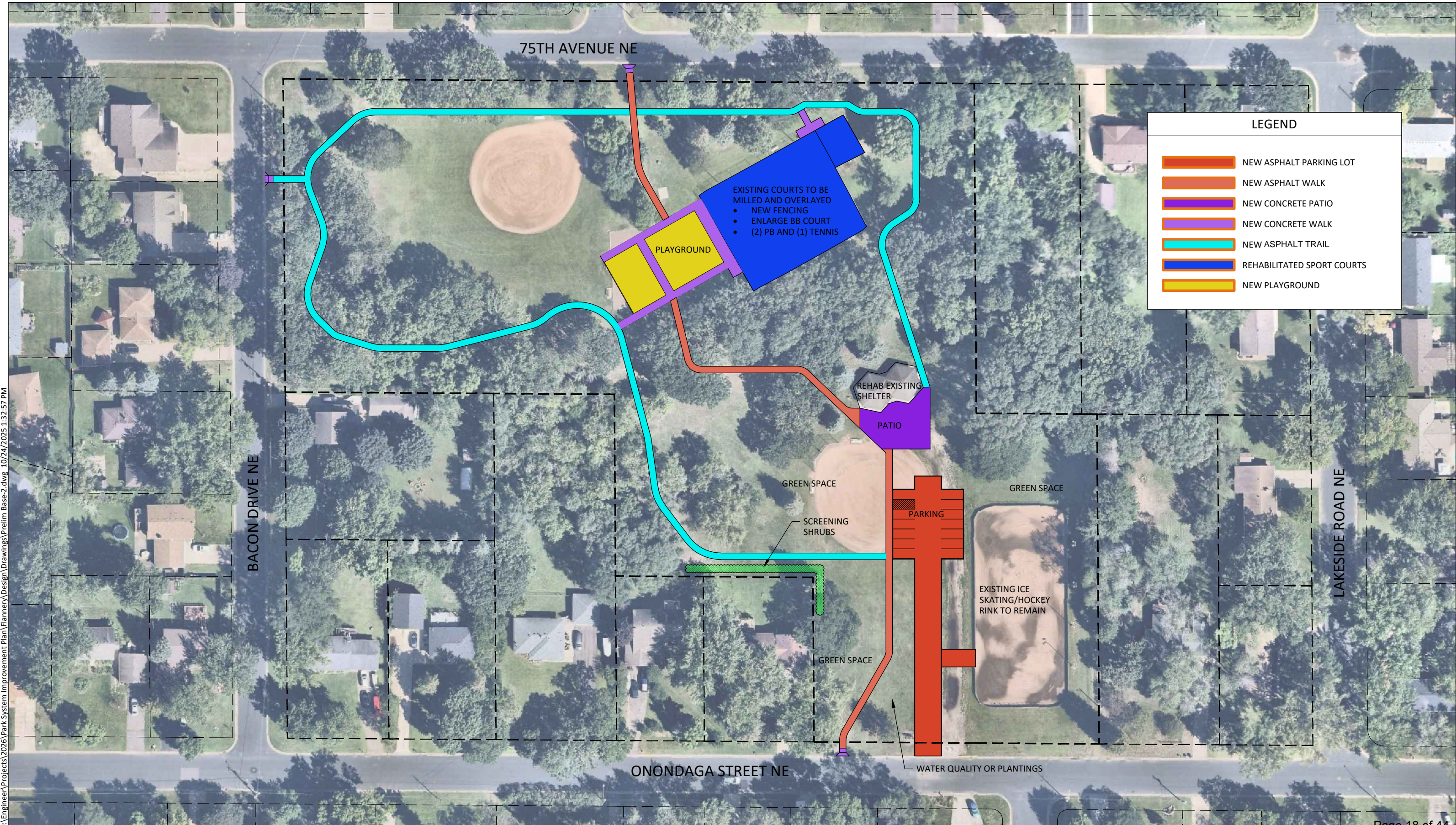
Attachments and Other Resources

-
1. Flanery_Revised
 2. Summit Square Park REVISED

3. briardale
4. hackmann-circle
5. harris-lake
6. madsen-park
7. ruth-circle
8. creekridge
9. innsbruck
10. jay
11. terrace-park

Vision Statement

We believe Fridley will be a safe, vibrant, friendly, and stable home for families and businesses.



I:\Engineer\Projects\2026\Park System Improvement Plan\Flannery\Design\Drawings\Prelim Base-2.dwg_10/24/2025 1:32:57 PM



J:\Engineer\Projects\2026\Park System Improvement Plan\Summit Square\Design Drawings\Sheets\SS Prelim.dwg 1/28/2026 11:19:50 AM

Briardale Park

6171 RICE CREEK DRIVE

PARK TYPE: NEIGHBORHOOD PARK

SIZE: 2.8-ACRES

RESIDENTS SERVED: 721

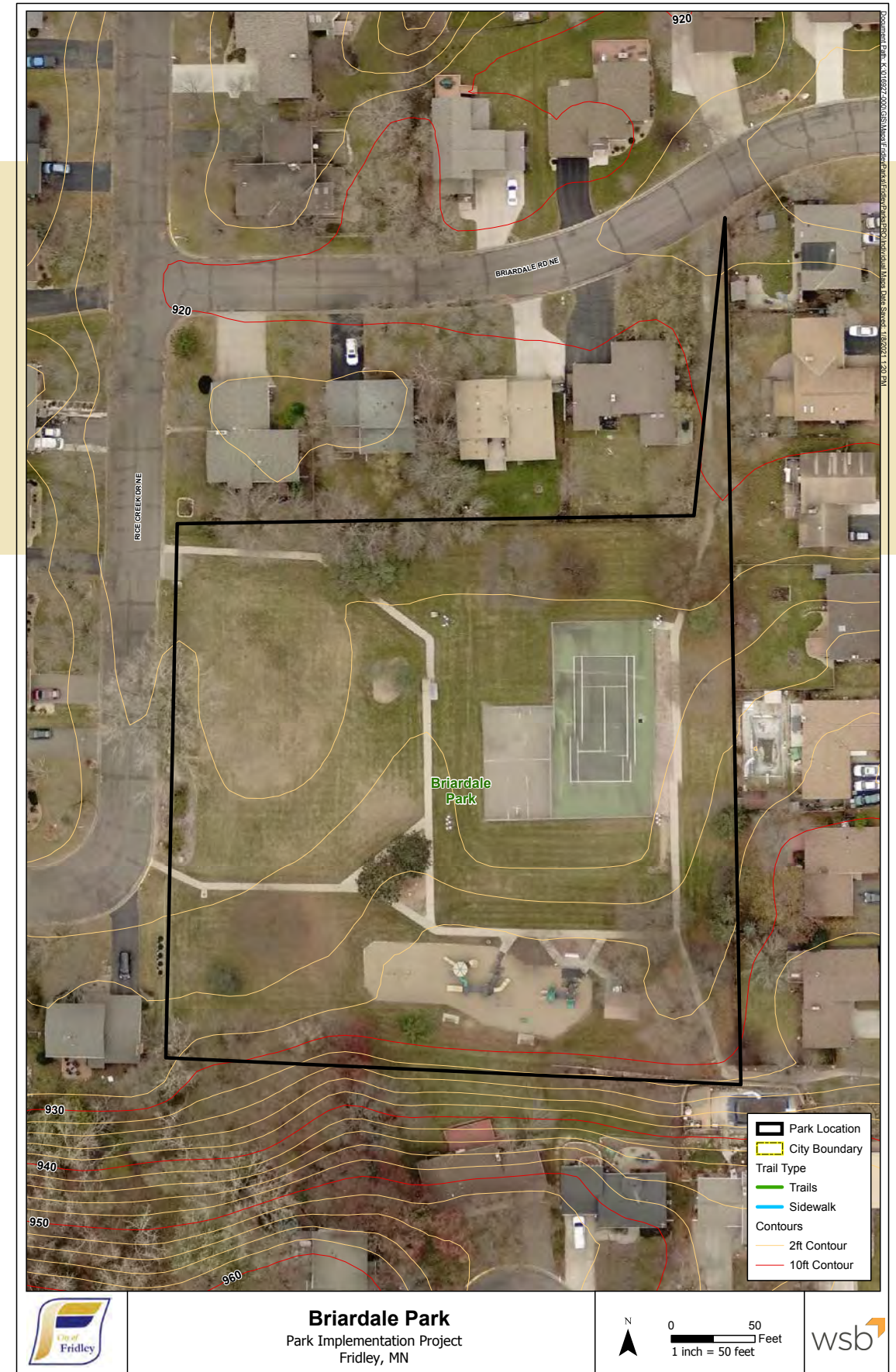
SPECIAL USES: NONE

DESCRIPTION:

Neighborhood park with broad range of recreational amenities servicing neighborhood #30. Has on-street parking, a large playground (1998), single tennis court, small shelter, drinking fountain, undersized basketball court and a large lawn space used for winter skating. There are known water issues at the SE trail connection and the majority of the amenities are at or beyond their useful life.



**EXISTING
PARK
FEATURES:**



RECOMMENDATIONS & ESTIMATE OF PROBABLE COSTS:

General recommendations include minor layout modifications for an improved experience with a focus on improved sustainability and accessibility. Replace all outdated amenities as needs dictate.

Recommendations include:

- Landscape enhancements
- Convert turf to low-grow and/or bee-friendly mixture with optional native pollinator areas in select locations
- Replace playground equipment meeting broader range of challenge levels and age groups (consider some inclusive features) with ADA compliant playground surfacing (engineered wood fiber) and rubber surfacing or tiles at primary access points and high-wear areas
- Concrete playground border
- Replace basketball court and tennis court when necessary (no pickleball) with adjacent seating and viewing areas
- New picnic shelter with 2-4 tables (permanent restrooms optional)
- Site furnishings with common characteristic (benches, tables, receptacles, bike racks, drinking fountain, etc.)
- Loop walk system and added walk connections for improved accessibility
- Wayfinding signs
- Security light

The estimate of probable costs for completing the recommendations shown range from approximately \$340,000 to \$442,000.

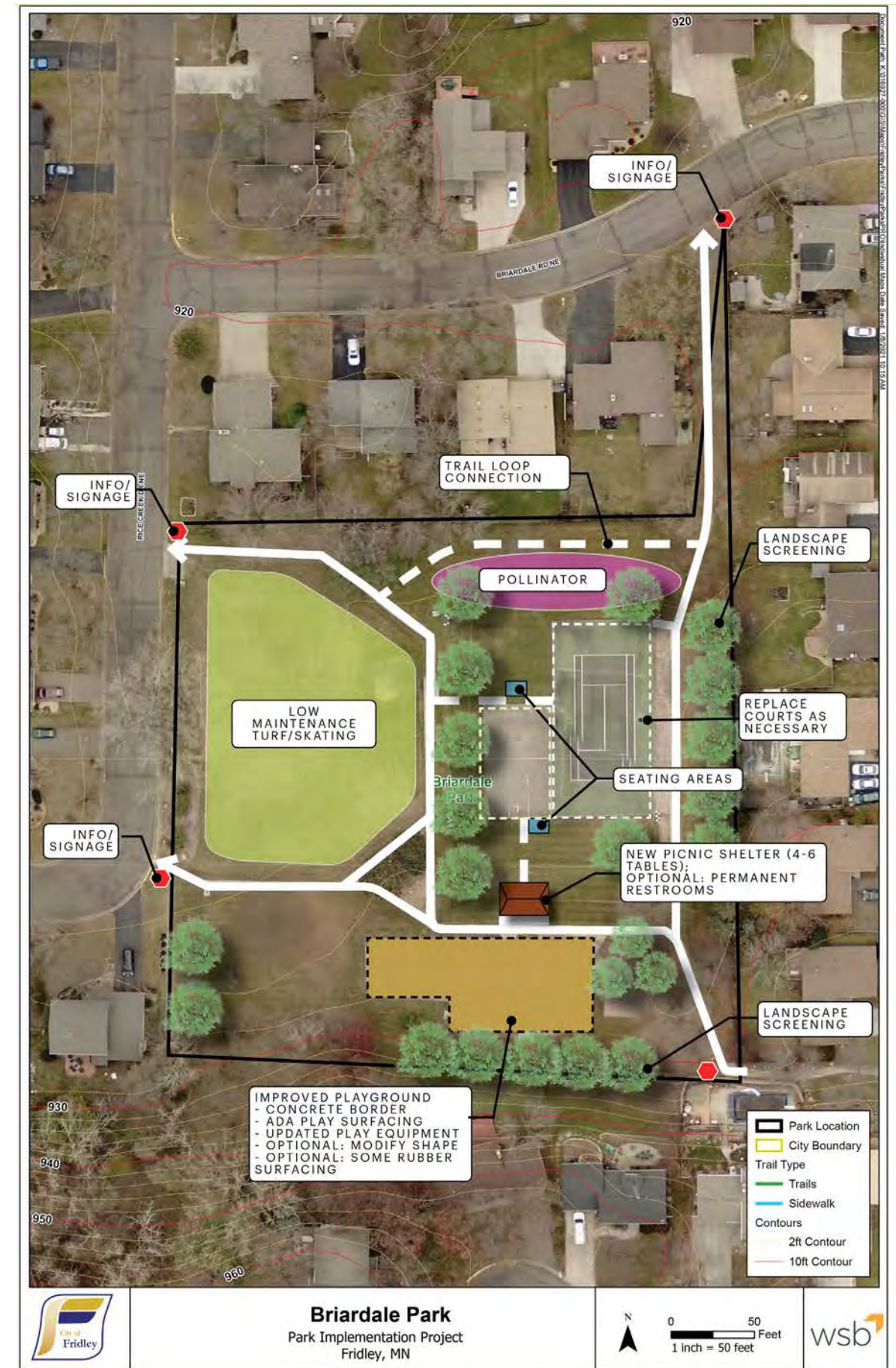
Specific assumptions and exclusions:

- Does not account for unknown site factors (poor soils, drainage concerns, etc.)
- Assumes general budget for restroom utilities

PRIORITY LEVEL:



This neighborhood park offers a broad range of recreational amenities, and is ranked medium.

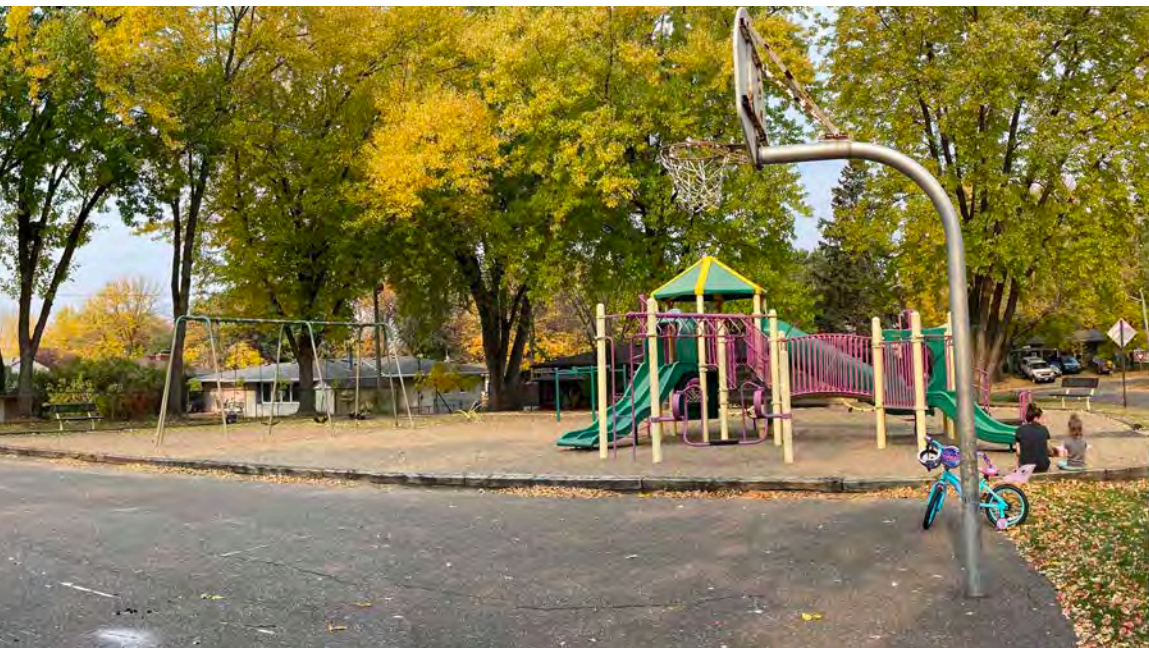


Hackmann Circle Park

1071 HACKMANN CIRCLE NE

PARK TYPE: NEIGHBORHOOD PARK
SIZE: 4.4-ACRES
RESIDENTS SERVED: 385
SPECIAL USES: NONE

DESCRIPTION:
 Neighborhood park that services neighborhoods #32 and #33 with some possibility of neighborhood #29 that is currently lacking a park. All of these neighborhoods are also supported by Moore Lake Park. Hackmann Circle has a playground and full size (undersized) basketball court up right on the northern property lines with a large open green space.



EXISTING PARK FEATURES:



RECOMMENDATIONS & ESTIMATE OF PROBABLE COSTS:

General redevelopment with some minor layout modifications to incorporate new amenities and replace existing amenities for an improved recreational experience.

Recommendations include:

- Landscape enhancements and screening
- Open lawn with low-grow and/or bee-friendly turf mixture
- New playground (moved further away from property line) meeting varying age groups
- ADA compliant playground surfacing (engineered wood fiber)
- Concrete playground border
- Relocated full size basketball court
- Picnic shelter with 2 tables
- Site furnishings with common characteristic (benches, tables, receptacles, bike racks, drinking fountain, etc.)
- Walk connections
- Optional water treatment area
- Security light

The estimate of probable costs for completing the recommendations shown range from approximately \$270,000 to \$340,000.

Specific assumptions and exclusions:

- Does not account for unknown site factors (poor soils, drainage concerns, etc.)
- Does not include utilities

PRIORITY LEVEL:



This neighborhood park has limited opportunities for added types of recreation but it services multiple neighborhood service areas, and is ranked medium.



Harris Lake Park

1620 MISSISSIPPI STREET NE

PARK TYPE: NEIGHBORHOOD PARK

SIZE: 1.7-ACRES

RESIDENTS SERVED: 321

SPECIAL USES: STORMWATER STORAGE; WATER FRONTAGE

DESCRIPTION:

This neighborhood park services neighborhood #26 and is situated on Harris Lake with very scenic views. Its location along Mississippi Street, which is a busy route, is currently not conducive to pedestrian connectivity to the park. It has a playground, shelter and picnic areas overlooking the lake.



EXISTING PARK FEATURES:



RECOMMENDATIONS & ESTIMATE OF PROBABLE COSTS:

General recommendations include redevelopment with some minor layout modifications to incorporate new amenities and replace existing amenities for an improved recreational experience with strengthened connection to Harris Lake and improved pedestrian access. There are existing plans to modify Mississippi Street with a pedestrian route along the south side of the street that will help improve overall access to the park.

Recommendations include:

- Landscape enhancements and screening
- Open lawn with low-grow and/or bee-friendly turf mixture
- New playground meeting varying age groups
- ADA compliant playground surfacing (engineered wood fiber)
- Concrete playground border
- Picnic shelter with 2 tables
- Small parking area for improved access and safety
- Site furnishings with common characteristic (benches, tables, receptacles, bike racks, drinking fountain, etc.)
- Trail amenities (bike rack, kiosk)
- Walk and trail connections to create an internal loop
- Lake seating areas
- Dock on lake
- Potential water treatment area
- Security light

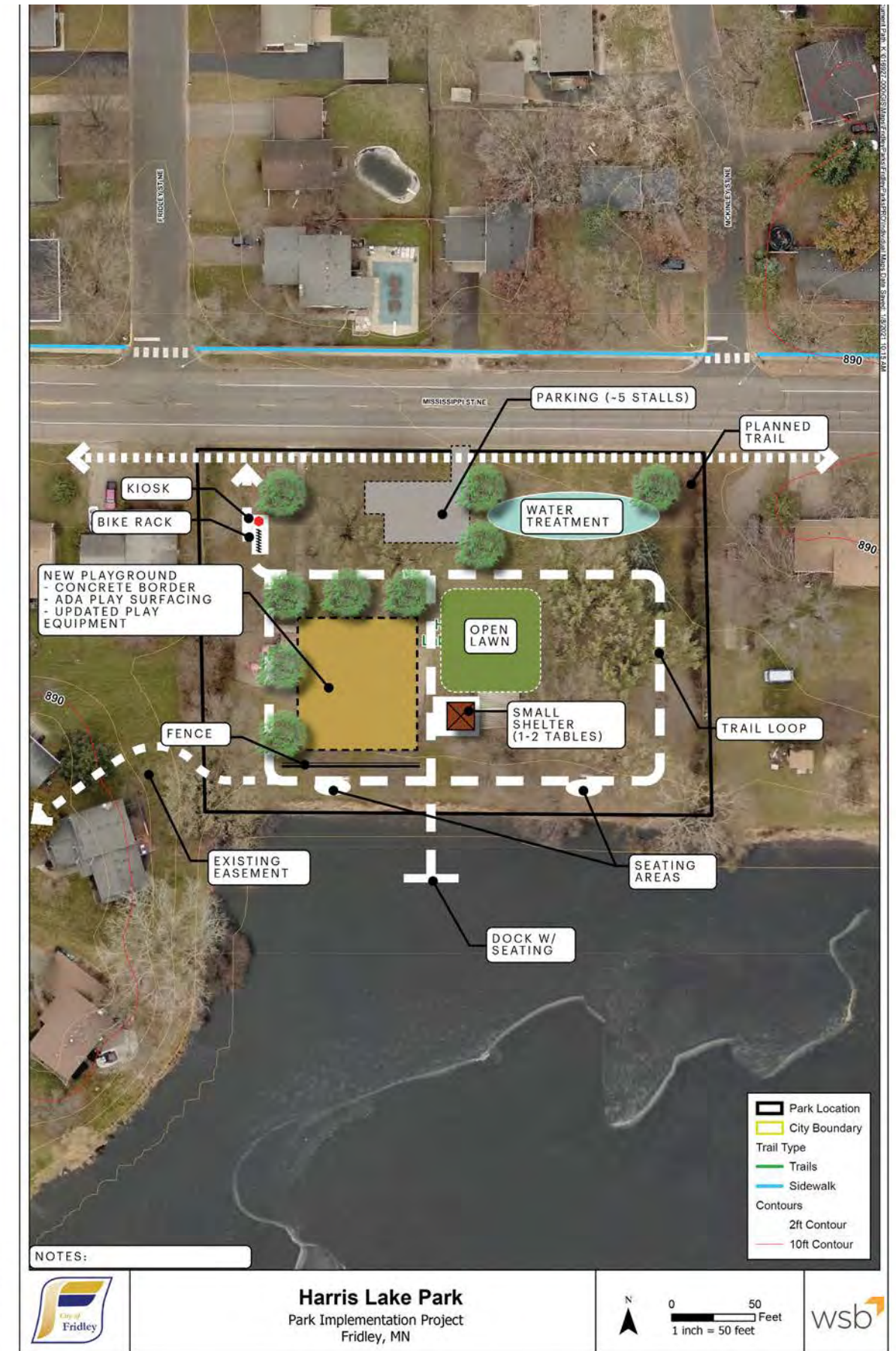
The estimate of probable costs for completing the recommendations shown range from approximately \$314,000 to \$425,000.

Specific assumptions and exclusions:

- Does not account for unknown site factors (poor soils, drainage concerns, etc.)
- Does not include utilities



This neighborhood park has limited opportunities for added types of recreation and services a small population / service area, and is ranked low.



Madsen Park

725 - 73RD AVENUE NE

PARK TYPE: NEIGHBORHOOD PARK

SIZE: 6.2-ACRES

RESIDENTS SERVED: 2578

SPECIAL USES: HOCKEY RINK / SPECIALTY BASKETBALL COURT

DESCRIPTION:

One of the larger neighborhood parks in a highly visible location along the frontage road to 73rd Ave that services neighborhood #5 and potential to better service neighborhoods #6, #7 and #9 with improved pedestrian connectivity. The park has a broad range of amenities that includes an off-street parking lot, hockey rink, pleasure rink, single tennis court, specialty basketball court, playground and open lawn that was once a ballfield. The site has areas with drainage issues.



EXISTING PARK FEATURES:



RECOMMENDATIONS & ESTIMATE OF PROBABLE COSTS:

General recommendations include redevelopment of the site with a focus on expanding on the recreation to accommodate the large service area and to improve the recreational experience for a broader range of users.

Recommendations include:

- Landscape enhancements to include an edible orchard
- Multi-use lawn field space
- Improved parking lot, potentially moved with expanded capacity
- New playground meeting varying age groups with unique elements and connected seating plaza with shade structures
- ADA compliant playground surfacing (engineered wood fiber) with rubber surfacing or tiles in high wear areas
- Concrete playground border
- New park trails with internal loops and improved connection to external trails with crosswalks
- Exercise or challenge pieces along trails
- Park pavilion building with wifi, restrooms, open air picnic area, and potentially an internal meeting room
- Paved hockey rink for multi-season use including basketball overlay
- Ballfield improvements
- Site furnishings with common characteristic (benches, tables, receptacles, bike racks, drinking fountain, etc.)
- Reconstructed tennis court
- Wayfinding signs
- Stormwater improvements
- Security light

The estimate of probable costs for completing the recommendations shown range from approximately \$2.1 to \$3 million.

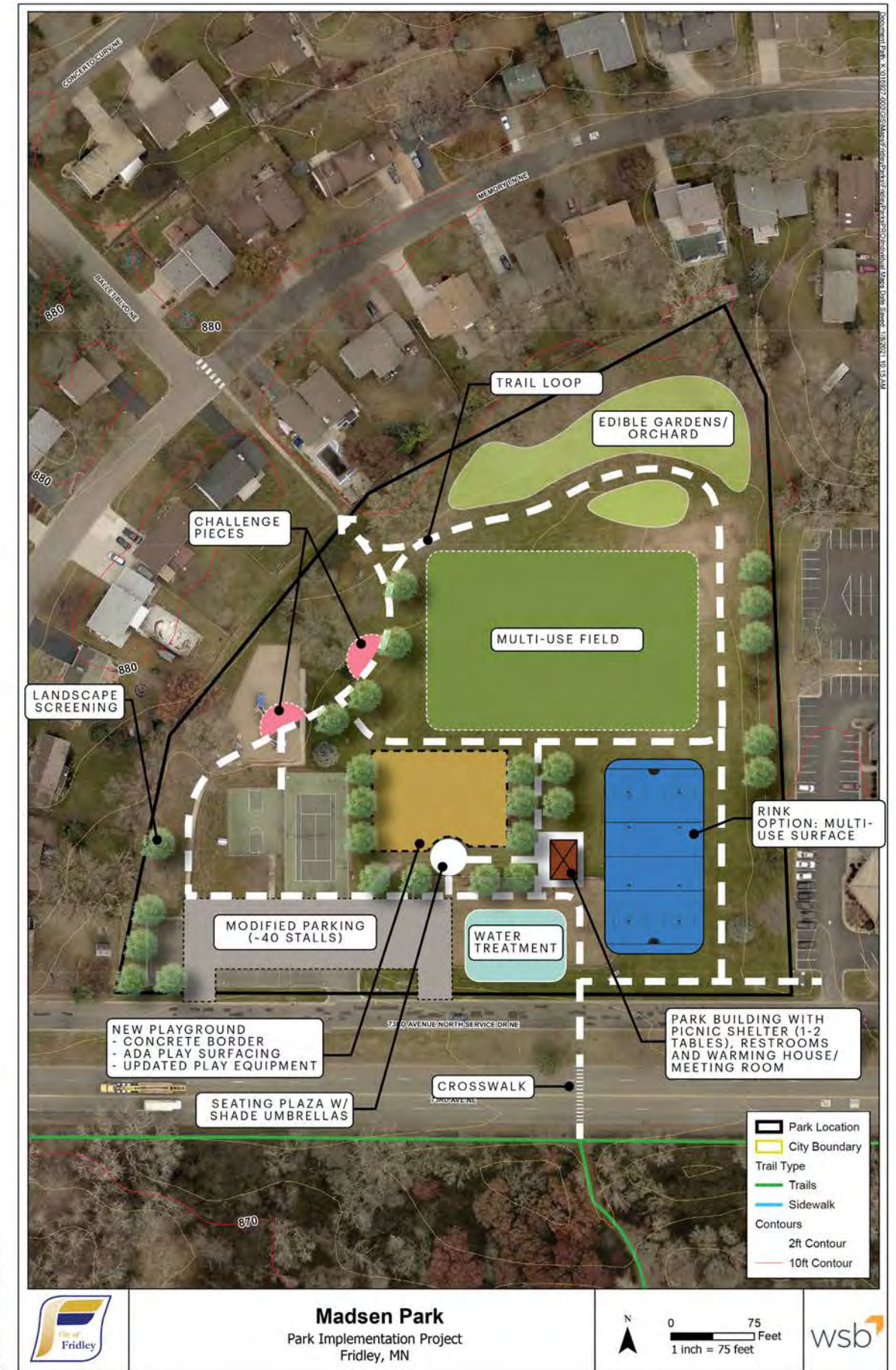
Specific assumptions and exclusions:

- Does not account for unknown site factors (poor soils, drainage concerns, etc.)
- Extent of stormwater improvements currently unknown

PRIORITY LEVEL:



This neighborhood park has a broad range of amenities and services numerous neighborhood areas, and is ranked high.



Ruth Circle Park

8160 ASHTON AVENUE NE

PARK TYPE: NEIGHBORHOOD PARK

SIZE: 3.6-ACRES

RESIDENTS SERVED: 1340

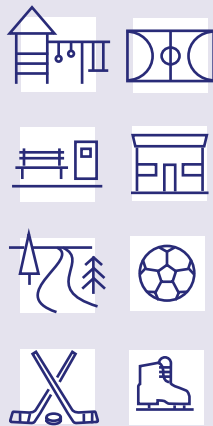
SPECIAL USES: HOCKEY RINK W/WARMING HOUSE

DESCRIPTION:

Neighborhood park servicing neighborhood #3 that includes an underserved population. The park contains a broad range of amenities including a playground, basketball court, hockey rink and pleasure skating area, warming house, and open lawn. The site has on-street parking only.



**EXISTING
PARK
FEATURES:**



RECOMMENDATIONS & ESTIMATE OF PROBABLE COSTS:

General recommendations includes full redevelopment with some modifications to the layout to make the most of the park land available for an improved recreational experience.

Recommendations include:

- Landscape enhancements
- Low-grow lawn in select locations
- Replace playground equipment meeting broader range of challenge levels and age groups
- ADA compliant playground surfacing (engineered wood fiber)
- Concrete playground border
- Improve basketball half court
- Optional: paved rink for multi-season use (remove existing half court with this option)
- New picnic shelter with 4-6 tables and permanent restrooms
- Optional: include an indoor room for rentals and warming house
- Site furnishings with common characteristic (benches, tables, receptacles, bike racks, drinking fountain, etc.)
- Loop trail system and added walk connections for improved accessibility
- Optional: four parallel parking stalls along building for improved accessibility
- Wayfinding signs
- Security light

The estimate of probable costs for completing the recommendations shown range from approximately \$900,000 to \$1.25 million for base preferred improvements and an additional \$275,000 to \$385,000 for deferred or alternate improvements.

Specific assumptions and exclusions:

- Does not account for unknown site factors (poor soils, drainage concerns, etc.)
- Does not include utilities

PRIORITY LEVEL:



This park provides a broad range of recreation for a large neighborhood service area and is ranked medium.



Creekridge Park

1380 CREEK PARK LANE

PARK TYPE: NEIGHBORHOOD PARK
SIZE: 2.2-ACRES
RESIDENTS SERVED: 963
SPECIAL USES: NONE

DESCRIPTION:

Neighborhood park with a functional design and nice character. The park directly services neighborhood #21 but can also help serve underserved neighborhoods #20 and #25. It has a single tennis court with undersized basketball tucked behind it, a formal ballfield, playground, small shelter and rain garden. There is a trail within an easement to the north of the park and a dead-end trail south that connect to the Mississippi Street sidewalk through a 15-foot easement.



**EXISTING
 PARK
 FEATURES:**



RECOMMENDATIONS & ESTIMATE OF PROBABLE COSTS:

General recommendations include maintaining, repairing and replacing items as needs dictate with improvements to overall accessibility and sustainability with a consistent character.

Recommendations include:

- Add plantings along playground for shade and screening for utility boxes
- Convert turf to low-grow turf mixture
- Natural resource management of rain garden
- Replace playground equipment with potential to expand playground area
- ADA compliant playground surfacing (engineered wood fiber)
- Concrete playground border
- Added walks and trail connections,
- ensure ADA compliant
- Replace basketball and tennis courts as necessary
- New picnic shelter with 2 tables and outlet
- Site furnishings with common characteristic (benches, tables, receptacles, bike racks, etc.)
- Replace backstop and players benches
- Wayfinding signs
- Security light and adjust timing for tennis court light

The estimate of probable costs for completing the recommendations shown range from approximately \$250,000 to \$325,000.

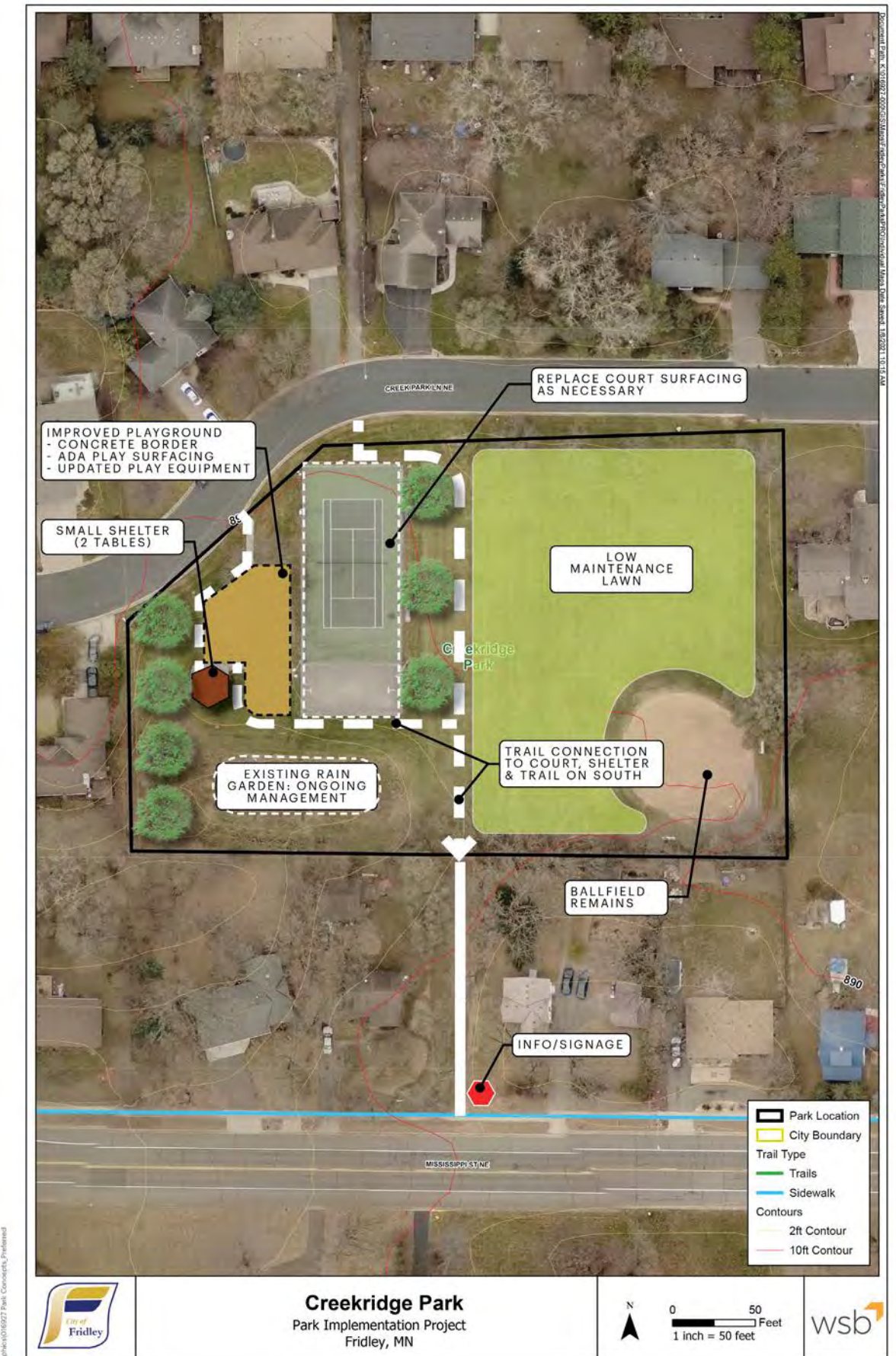
Specific assumptions and exclusions:

- Does not account for unknown site factors (poor soils, drainage concerns, etc.)
- Does not include utilities

PRIORITY LEVEL:



This neighborhood park offers a broad range of recreational amenities that are currently sufficient, though it services multiple neighborhoods, including underserved populations, and is ranked medium.

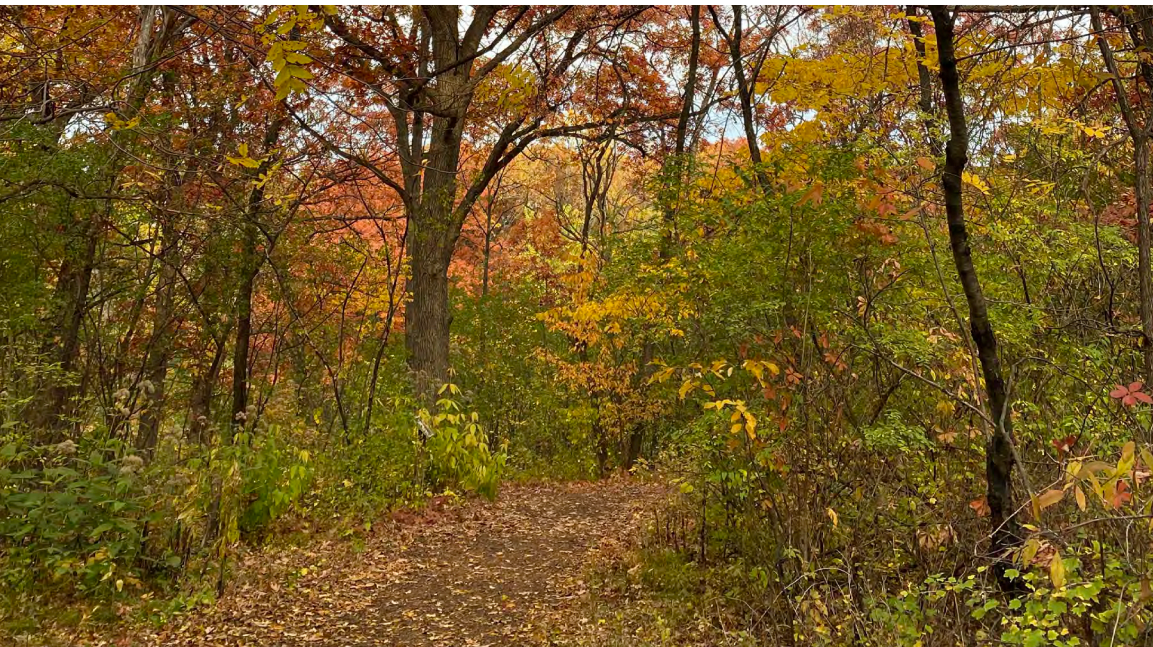


Innsbruck Nature Center

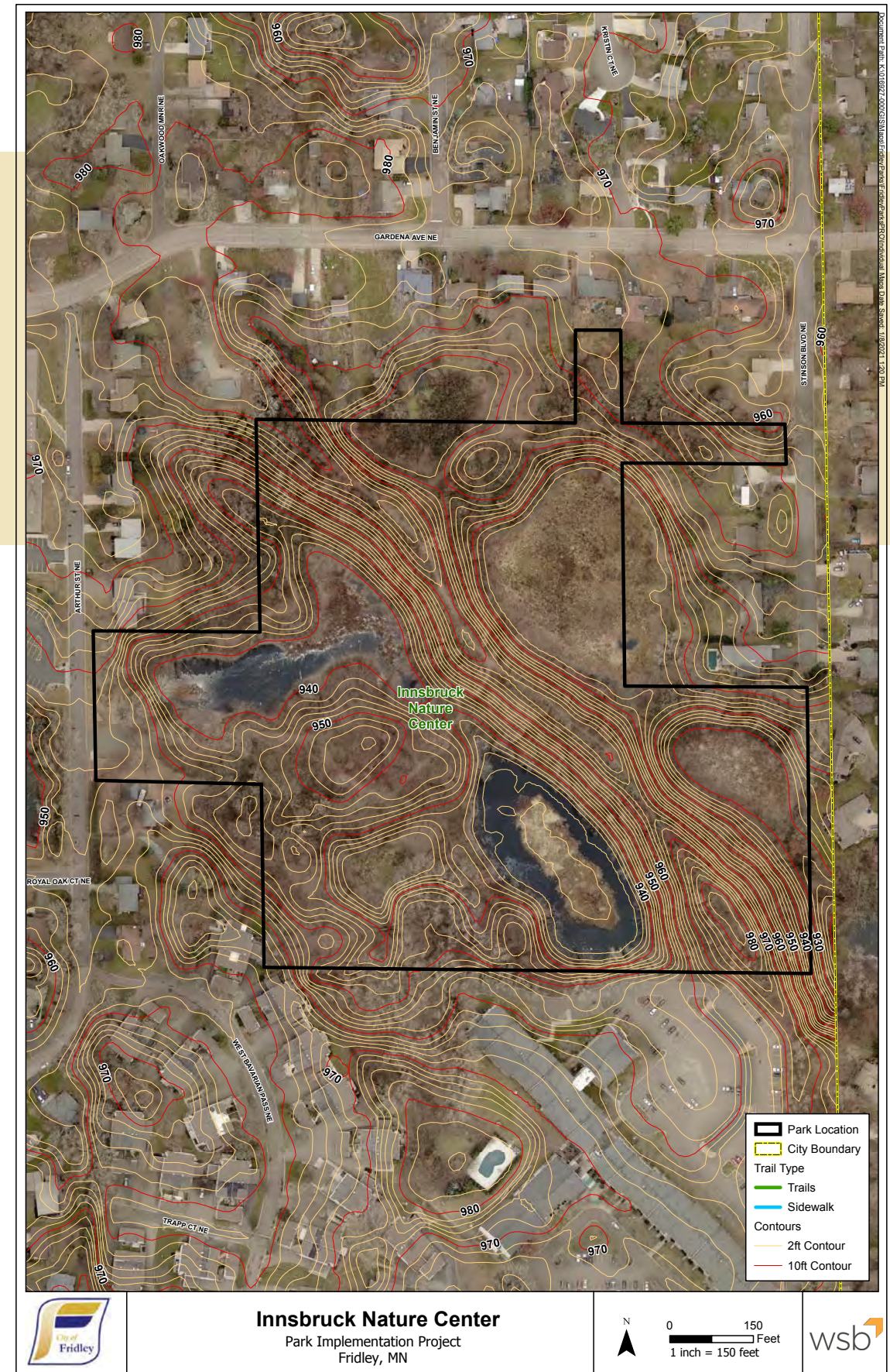
5815 ARTHUR STREET NE

PARK TYPE: OPEN SPACE CONSERVATION AREA
SIZE: 24-ACRES
RESIDENTS SERVED: N/A
SPECIAL USES: STORMWATER STORAGE / NATURAL RESOURCES

DESCRIPTION:
 This natural resource based conservation park contains a mixture of ecological areas from wetlands to woodlands. It is located in neighborhood #34 though is considered to serve the broader community. The site contains natural surfaced trails and older interpretive / educational signs. There is a small parking area and bike racks off of Arthur Street and several neighborhood trail access points.



EXISTING PARK FEATURES:



RECOMMENDATIONS & ESTIMATE OF PROBABLE COSTS:

General recommendations include ongoing natural resource management for improved resiliency and habitat. General improvements to focus on infrastructure to support appropriate site use and programming opportunities for passive use recreation. There may be opportunities to expand upon the park land and trail system through acquisition of an uninhabited lot by the park entrance and an additional trail connection to Gardena Avenue, as feasible.

Recommendations include:

- Natural resource management with a focus on improved water quality and natural systems with reduced invasive species
- Enhance entrance by parking lot with improved signage and amenities
- Improve trail surfacing with aggregate and stabilization where needed with admixture
- Drinking fountain with pet bowl
- Dog waste stations
- New interpretive and wayfinding signage throughout the park
- Seating and viewing areas (consider overlook shelter at west pond near parking lot)
- Optional trail expansion to Gardena Ave (dependent on site conditions)
- Optional land acquisition for small nature center building for programming and restrooms
- Site furnishings with common characteristic (benches, tables, receptacles, bike racks, drinking fountain, etc.)
- Security light

The estimate of probable costs for completing the recommendations shown range from approximately \$300,000 to \$385,000 for base preferred improvements and an additional \$200,000 to \$290,000 for deferred or alternate improvements.

Specific assumptions and exclusions:

- Does not account for unknown site factors (poor soils, drainage concerns, etc.)
- Does not include utilities
- Does not include land acquisition costs

PRIORITY LEVEL:



This park is focused on passive use recreation and and is ranked low.



Jay Park

6540 - 2ND STREET NE

PARK TYPE: NEIGHBORHOOD PARK

SIZE: 1.8-ACRES

RESIDENTS SERVED: 228

SPECIAL USES: LARGE RAIN GARDEN

DESCRIPTION:

Neighborhood park with a nice character and services neighborhood #17, which is a smaller neighborhood. Includes a playground, very small half basketball court, a large rain garden and some open lawn with trail connections to opposing streets.



EXISTING PARK FEATURES:



RECOMMENDATIONS & ESTIMATE OF PROBABLE COSTS:

General recommendations include maintaining, repairing and replacing items as needs dictate.

Recommendations include:

- Landscape enhancements and screening
- Open lawn with low-grow and/or bee-friendly turf mixture
- Enhanced rain garden (function and aesthetics)
- New playground meeting varying age groups
- ADA compliant playground surfacing (engineered wood fiber)
- Concrete playground border
- Picnic shelter with 2 tables
- Improve basketball half court with option to expand on size
- Walk connections to court
- Security light

The estimate of probable costs for completing the recommendations shown range from approximately \$160,000 to \$180,000.

Specific assumptions and exclusions:

- Does not account for unknown site factors (poor soils, drainage concerns, etc.)
- Does not include utilities

PRIORITY LEVEL:



This park services an isolated service area, and is ranked medium.



Terrace Park

6735 - 7TH STREET NE

PARK TYPE: NEIGHBORHOOD PARK

SIZE: 3.5-ACRES

RESIDENTS SERVED: 701

SPECIAL USES: NONE

DESCRIPTION:

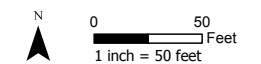
Neighborhood park servicing neighborhood #18 and contains a single tennis court, ballfield and playground. This neighborhood also has access to Civic Center Campus and Playground, Locke County Park, the Rice Creek West Regional Trail and Meadowlands Park.



EXISTING PARK FEATURES:



Terrace Park
Park Implementation Project
Fridley, MN



RECOMMENDATIONS & ESTIMATE OF PROBABLE COSTS:

General recommendations includes replacement of existing amenities was necessary for an improved recreational experience.

Recommendations include:

- Landscape enhancements & screening
- General ballfield improvements (infield, fencing, benches)
- Low-grow ballfield lawn
- New trails to create internal loop to connect to amenities
- Replace playground equipment meeting varying age groups
- ADA compliant playground surfacing (engineered wood fiber)
- Concrete playground border
- Site furnishings with common characteristic (benches, tables, receptacles, bike racks, drinking fountain, etc.)
- Picnic shelter with two tables
- Improve tennis court as necessary
- Wayfinding signs
- Security light

The estimate of probable costs for completing the recommendations shown range from approximately \$330,000 to 415,000.

Specific assumptions and exclusions:

- Does not account for unknown site factors (poor soils, drainage concerns, etc.)
- Does not include utilities

PRIORITY LEVEL:



This park provides a broad range of recreation for the neighborhood service area, which also has access to other recreational opportunities, and is ranked low.



AGENDA REPORT



Meeting Date: February 2, 2026
Meeting Type: Parks and Recreation Commission
Submitted By: Mike Maher, Parks and Recreation Director
Title: Fridley Parks and Recreation Staff Report

Background

Attached is the update from the Fridley Parks and Recreation Staff for January 5, 2026 Parks and Recreation Commission meeting.

Recommendation

Attachments and Other Resources

1. Staff Report.Jan 2026

Vision Statement

We believe Fridley will be a safe, vibrant, friendly, and stable home for families and businesses.

STAFF REPORT



Recreation Division: January 2026

Winter Programs

Below is a list of programs and participation numbers for those that took place in January.

Ages 15+

Immersive Soundbath: Jan 15	14
-----------------------------	----

Preschool: Ages 3-5

Basketball (6 sessions): Jan-Feb	16
----------------------------------	----

Elementary – Middle School: Grades K-6

Basketball (6 sessions): Jan-Feb	14
Tae Kwon Do (6 sessions): Jan-Feb	20
Learn to Ice Skate (6 sessions): Jan-Feb	12
Glow In The Dark (6 sessions): Jan-Feb	12

Adult Fitness and Athletics

Zumba (2 classes/6 sessions each): Jan-Feb	15
Pickleball for Beginners: Jan F=6, SLP=2	8
Pickleball Ladder League All Ages: Jan-Mar F=25, SLP=20	45
Pickleball Ladder League Ages 20-40: Oct - Dec F=13, SLP=5	18
Volleyball Coed Rec: Jan-Mar*	10 teams
Volleyball Coed Comp: Jan-Mar*	10 teams
Volleyball Women's Comp: Jan-Mar*	10 teams
Bag Toss League Co-ed Jan-Mar*	10 pairs
Men's Basketball Leagues (2 Rec Leagues): Dec - Mar	17 teams

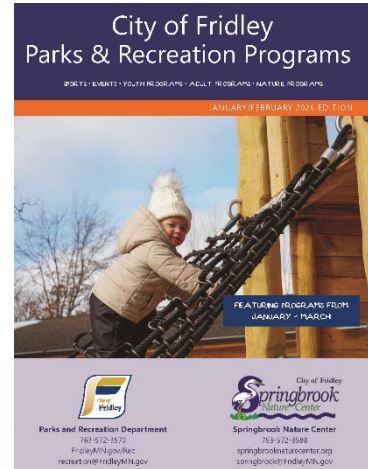
*North Metro Leagues are offered in cooperation with Mounds View, New Brighton, and Spring Lake Park.

Parks and Recreation Activity Guide

The January/February edition of the Activity Guide was mailed to residents beginning on January 11.

January Facility Rentals

Facility	Reservations
Moore Lake Community Building	12
Hayes Pickleball Courts	15 hours



SEED SWAP
Start a garden, grow something new in your garden. Make Connections and share your seeds!

SPRING FLING DANCE
Join the celebration at our first "fling" spring dance. Dance to your favorite spring tunes and get ready for the coming year with a variety of fun activities.

APRIL FOOL'S SCAVENGER HUNT
Join a virtual or in-person FREE April Fool's Scavenger Hunt. Complete clues, solve riddles and find a lot of fun prizes.

SAVE THE DATE - ENVIRONMENTAL FUN FAIR
Mark your calendar for the 2025 Environmental Fun Fair at the Springbrook Nature Center. A variety of outdoor and indoor activities will be available for all ages.

FREE winterfest
12 - 3 p.m. | Saturday, February 7
Springbrook Nature Center, 300 65th Avenue NE

FRIDAY WINTERFEST LANTERN WALK
Join us for a lantern walk at the Springbrook Nature Center. Bring your own lantern or purchase one from us.

SPRINGBROOK NATURE CENTER (SNC)
We're going down to nature - your way! Enjoy three miles of hiking trails, interpretive programs, and scenic views.

FIELD TRIPS AT SNC
Calling all hikers, snowshoers, and birders! Join us for a field trip to the Springbrook Nature Center.

NATURE EXPLORATION FOR HOMESCHOOLERS
Join us for a nature exploration program for homeschoolers. We'll explore the wonders of the natural world.

BIRTHDAY PARTY PROGRAMS
Celebrate your child's birthday at the Springbrook Nature Center. We offer a variety of party options.

WINTER FUN!
Join us for winter fun activities at the Springbrook Nature Center. We'll have snowshoeing, ice skating, and more.

MAPLE SYRUP
Join us for a maple syrup festival at the Springbrook Nature Center. We'll have maple syrup tastings and more.

ADULT PROGRAMS

COFFEE CHAT WITH A NATURALIST
Join us for a coffee chat with a naturalist. We'll discuss the wonders of the natural world.

ZUMBA
Join us for a Zumba class at the Springbrook Nature Center. We'll have fun and burn calories.

55+ GOLF LEAGUE
Join us for a 55+ golf league at the Springbrook Nature Center. We'll have a fun and competitive golfing experience.

After-School Programs

Our current session of after school classes began after winter break and will run through mid-February. We have great enrollment in all our programs: Basketball, Tae Kwon Do, Glow in the Dark and Learn to Skate. Participants have been enjoying the many activities offered.



Learn to Skate Partnership

We partnered with Minneapolis Titans Hockey to offer learn to skate classes for youth in grades K-4. Hayes Elementary School partnered with us to provide the kids with skates and helmets for them to use during class. Parents of the participants are grateful that Fridley is offering a learn to skate class that is affordable and accessible for their kids. We are excited to continue to partner with the Titans in future community events & programs, especially next year at the new Commons Park!

Summer Recreation Internship

We are currently accepting applications for our summer internship. Application deadline is February 24. Position will begin at the end of May and end in August.

Adult Athletic Leagues

January was a busy month for our adult leagues as we started up the following leagues: three volleyball leagues, two pickleball leagues and one bag toss league. Adults have been excited to get back on the court after a few weeks off around the holidays.

Upcoming Events and Programs

- February 2: Spring Volleyball League Registration Opens
- February 7: Winterfest (Free)
- February 10: Immersive Soundbath – Meditation Class
- February 11: 55+ Golf Registration Opens
- March 7: Seed Swap at Moore Lake Community Building

Springbrook Nature Center

Environmental Education

Number of Program Participants: 156

Hours of Instruction: 199

January Facility Rentals & Birthday Parties

January Birthday Parties	2
January Indoor Room Rentals	6

Grants

- Springbrook has recently applied for grant funding from the International Paper Foundation. If awarded, we plan to use the funds to replace a slightly damaged MicroEye interactive microscope. The replaced microscope will transition into naturalist-led program usage, allowing naturalists to more easily show large groups of students what they have found in nature while being hooked into our AV system for ease of viewing.

Upcoming Events

Lantern Light Hikes

(6:30-8:30 pm, \$5 per person)

February 6

March 6

Summer Camp Pre-Registration and Scholarship Application Dates

January 9: Pre-Registration Opens for 2026 Summer Camp

January 12: Summer Camp Scholarship Applications Open



Lantern Light Hikes

December 5 February 6
January 9 March 6

6:30 - 8:30 p.m.
\$5/person

Bundle up and bring the whole family to enjoy an evening following the glow of lantern lit trails at Springbrook Nature Center. Listen to owls hooting, keep your eyes peeled for elusive nocturnal animals, warm up by the fireplace. Registration required.

If snowpack allows, snowshoes will be available to rent for \$5/pair, while supplies last.

Park Construction and Maintenance

- Ice rink conditions have been favorable, and daily maintenance is required to keep the rinks in good condition.
- Commons Park construction remains on schedule. Interior building work is ongoing with the building being fully enclosed, drywall being installed and exterior finishes being applied. Staff are putting in final orders for interior and exterior furnishings to continue towards a June opening of the park space.
- Staff submitted applications for Community Development Block Grants for nearly \$1.2 million in funding for Summit Square and Flanery Parks.
- The Fridley Lions will be raising funds for a new fishing pier at Moore Lake Park at their annual Winter Warmup event. Thank you, Fridley Lions!



Image of Commons Park Recreation Building construction progress from January 14, 2026



winterfest



12 - 3 p.m. | Saturday, February 7

Springbrook Nature Center, 100 85th Avenue NE

FREE

Wander through our Winter Wonderland with activities for the whole family! Some of the great things planned include:

- Medallion Hunt
- Kicksleds
- Snowshoeing
- Campfires
- S'mores & Hot Cocoa
- Storytime with Anoka Co. Library
- Self-guided nature walks
- Fat Tire Bikes
- Explore a snow plow with Public Works
- Free winter gear
- Games and more!



Parks & Recreation





January 5 - February 4

Let's keep each other warm! We are accepting donations of gently used/new winter outerwear. Please make sure your items are clean and ready for their new home!

Donation Locations

- Springbrook Nature Center
- Fridley Civic Campus

Donated gear will be available free of charge during Winterfest on February 7, 2026

Accepted Items

- winter coats
- snowpants
- pairs of gloves/mittens
- winter boots
- scarves
- hats (new only)
- warm socks (new only)