



Parks and Recreation Commission

February 03, 2025

7:00 PM

7071 University Avenue NE

Agenda

Call to Order

Roll Call

Approval of Agenda

Approval of Meeting Minutes

1. [January 6, 2025 Parks and Recreation Commission Minutes](#)

Open Forum

The open forum allows the public to address the Commission on subjects that are not on the Regular Agenda. The Commission will accept feedback or questions from the public and asks that comments are limited to five minutes or less.

New Business

2. [Commons Park Playground Final Design Review](#)
3. [Commons Park Splash Pad Final Design Review](#)
4. [Election of Vice Chair](#)

Old Business

Staff Reports

5. [Springbrook Nature Center Report](#)
6. [Park Maintenance and Construction Report](#)
7. [Fridley Parks and Recreation Division Report](#)

Adjournment

Accessibility Notice:

- If you need free interpretation or translation assistance, please contact City staff.
- Si necesita ayuda de interpretación o traducción gratis, comuníquese con el personal de la ciudad.
- Yog tias koj xav tau kev pab txhais lus los sis txhais ntaub ntauv dawb, ces thov tiv tauj rau Lub Nroog cov neeg ua hauj lwm.

- Haddii aad u baahan tahay tarjumaad bilaash ah ama kaalmo tarjumaad, fadlan la xiriir shaqaalaha Magaalada.

Upon request, accommodation will be provided to allow individuals with disabilities to participate in any City of Fridley services, programs or activities. Hearing impaired persons who need an interpreter or other persons who require auxiliary aids should contact CityClerk@FridleyMN.gov or (763) 572-3450.



AGENDA REPORT

Meeting Date: February 3, 2025

Meeting Type: Parks and Recreation Commission

Submitted By: Mike Maher, Parks and Recreation Director

Title

January 6, 2025 Parks and Recreation Commission Minutes

Background

Attached are the meeting minutes of the January 6, 2025 Parks and Recreation Commission.

Financial Impact

None.

Recommendation

Staff recommends approval of the January 6, 2025 Parks and Recreation Commission minutes.

Attachments and Other Resources

- January 6, 2025 Parks and Recreation Minutes.

Vision Statement

We believe Fridley will be a safe, vibrant, friendly and stable home for families and businesses.



Park Commission Meeting

January 6, 2025

7:00 PM

Moore Lake Park, 5890 Central Ave. Fridley, MN 55432

Minutes

Call to Order

Chair Borman called the Parks and Recreation Commission meeting to order at 7:00 p.m.

Present

Luke Cardona
EB Graham
Peter Borman
Ken Schultz
Melissa Luna
Don Whalen

Absent

Tim Kirk

Also Present

Mike Maher, Parks and Recreation Director

Approve Parks & Recreation Commission Agenda for January 6, 2025

Motion by Commissioner Schultz to approve the January 6, 2025 meeting agenda. Seconded by Commissioner Graham. The motion passed unanimously.

1. Approve Parks & Recreation Commission Minutes for December 2, 2024

Motion by Commissioner Luna to approve the December 2, 2024 meeting minutes. Seconded by Commissioner Whalen. The motion passed unanimously.

Open Forum

No comments.

New Business

2. Special Event Permit

Mr. Maher presented an overview of the Special Event Policy and Ordinance including:

A special event is any temporary gathering or activity lasting more than one hour but no more than three consecutive days that either substantially interrupts the normal use of public spaces or has a public impact requiring City services beyond normal operations.

Types of events could include:

- Athletic events (5Ks, runs, walks, bicycle races)
- Block parties
- Carnivals, fairs and festivals
- Concerts and street dances
- Parades
- Outdoor events on City property with more than 200 people
- Outdoor events on private property requiring City services
- Events in City rental facilities exceeding facility capacity.

Next steps to include:

1. Incorporate suggestions from Parks and Recreation Commission
2. Policy and ordinance updates and approval
3. Build permit in Fridley's online permitting system, CitizenServe
4. Begin use for Fridley 49er Days 2025

Commissioner Schultz asked if Night to Unite block parties would require a permit. Mr. Maher answered that because Night to Unite is a City-sponsored event and city resources are already mobilized for the event, that a permit would not be required.

Commissioner Schultz asked about fireworks and Mr. Maher answered that fireworks are only permitted for City-sponsored events.

Commissioner Cardona expressed that the permit would not allow for disregard of city ordinances and that it appeared to be a well-developed and comprehensive policy.

Motion by Commissioner Cardona to recommend approval of the Special Event Permit policy and ordinance with a Second by Commissioner Graham. The motion passed unanimously.

3. Advisory Commission Onboarding Manual

Mr. Maher provided an overview of the Commission Onboarding Manual including:

1. Purpose is to provide a solid foundation of understanding for new and existing members of procedures, expectations and roles
2. Parks and Recreation is an advisory commission, providing recommendations to the City Council
3. Commissioners should review all meeting materials and be familiar with parks, trails, programs and upcoming park system plans

4. Appointment process occurs annually with Chair being appointed by Council and Commission appointments being confirmed by resolution. The Commission appoints a Vice-Chair
5. Meetings are facilitated by the Chair and follow Rosenberg's Rules of Order. The Chair should ensure that all on the Commission are participating and provide input
6. The staff liaison is responsible for preparing agendas and being a subject matter resource for the Commission
7. Meetings must have a quorum of at least 4 of 7 members and are subject to Minnesota's open meeting laws

Commissioners are asked to adhere to a code of conduct to include:

- Attend meetings regularly and punctually.
- Respect the decision-making process and any decisions made by the group.
- Notify your staff liaison if you will miss a meeting, to ensure quorum.
- Openly discuss issues and decisions during meetings.
- Don't seek special consideration or influence based on your position.
- Adhere to gift prohibition rules as outlined in Minn. Stat. § 471.895.
- Maintain confidentiality when required and adhere to data practices regulations
- Commissioners should recuse themselves from voting on matters where they have a personal interest
- Failure to comply with the expectations and responsibilities outlined in the Manual may constitute grounds for removal from the Commission

Motion by Commissioner Cardona to recommend approval of the Commission Onboarding Manual. Second by Commissioner Luna. The motion passed unanimously.

Old Business

Staff Reports

1. Springbrook Nature Center Report

Mr. Maher provided an update on December activities and upcoming events.

2. Fridley Parks and Recreation Division Report

Mr. Maher provided an update on December activities and upcoming events.

3. Park Maintenance and Construction Report

Mr. Maher reviewed the progress on park improvement projects and park maintenance activities.

Unfinished Business

None

Adjournment

Commissioner Luna made the motion to adjourn the meeting at 7:57 p.m. Seconded by Commissioner Whalen. The motion passed unanimously.

Respectfully submitted,

Mike Maher, Staff Liaison



AGENDA REPORT

Meeting Date: February 3, 2025

Meeting Type: Parks and Recreation Commission

Submitted By: Mike Maher, Parks and Recreation Director

Title

Commons Park Playground Final Design Review

Background

Commons Park will undergo major renovations in 2025-2026 and will feature a new inclusive playground. This project is funded by the approved Park System Improvement Plan funds as well as a \$500,000 grant from the State of Minnesota. The playground will feature accessible safety surfacing throughout as well as equipment that will engage users of all ages and abilities.

A draft design for the playground was presented to the public for comments during the summer of 2024 at a variety of events and through an online survey. Comments were used to refine the playground including modifying the play tower, adding zip line features and additional swings.

The proposal does not detail the primary play tower as it was under development during the preparation of the project costing. The renderings do show the full design of the new play tower, called the Volo Aire Tower, which was just unveiled by Landscape Structures on January 13th, 2025. Detail can also be found at: <https://www.playlsi.com/en/ad/volo-aire/>. The shown color palette is recommended by staff after reviewing a number of options.

Financial Impact

The playground equipment, installation and surfacing cost from Flagship Recreation and Landscape Structures is \$1,187,792.96. Additional project costs will be included in the project site work and will be completed by other contractors. All project bids will be brought to Council for review and approval.

Recommendation

Staff recommends that the Commission consider a motion to endorse the provided design and budget for the inclusive playground at Commons Park.

Attachments and Other Resources

Vision Statement



We believe Fridley will be a safe, vibrant, friendly and stable home for families and businesses.

-
- Revised Design and Budget_Fridley_CommonsPark_11-22-24.pdf

Vision Statement

We believe Fridley will be a safe, vibrant, friendly and stable home for families and businesses.



 Fridley - Commons Park - Palette AG
1188290-01-03_FS-Rev • 1.23.2025 
© 2025 Landscape Structures. All Rights Reserved



lsr
landscape
structures

Fridley - Commons Park - Palette AG

1188290-01-03_FS-Rev • 1.23.2025

flagship
recreation

© 2025 Landscape Structures. All Rights Reserved



Fridley - Commons Park - Palette AG

1188290-01-03_FS-Rev • 1.23.2025



© 2025 Landscape Structures. All Rights Reserved



Fridley - Commons Park - Palette AG

1188290-01-03_FS-Rev • 1.23.2025



© 2025 Landscape Structures. All Rights Reserved



Fridley - Commons Park - Palette AG

1188290-01-03_FS-Rev • 1.23.2025



© 2025 Landscape Structures. All Rights Reserved



Fridley - Commons Park - Palette AG

1188290-01-03_FS-Rev • 1.23.2025



© 2025 Landscape Structures. All Rights Reserved



slr
landscape
structures

Fridley - Commons Park - Palette AG
1188290-01-03_FS-Rev • 1.23.2025

flagship



Fridley - Commons Park - Palette AG

1188290-01-03_FS-Rev • 1.23.2025



© 2025 Landscape Structures. All Rights Reserved



lsr
landscape
structures

Fridley - Commons Park - Palette AG

1188290-01-03_FS-Rev • 1.23.2025

flagship
recreation

© 2025 Landscape Structures. All Rights Reserved



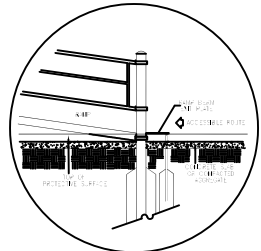
landscape
structures

Fridley - Commons Park - Palette AG

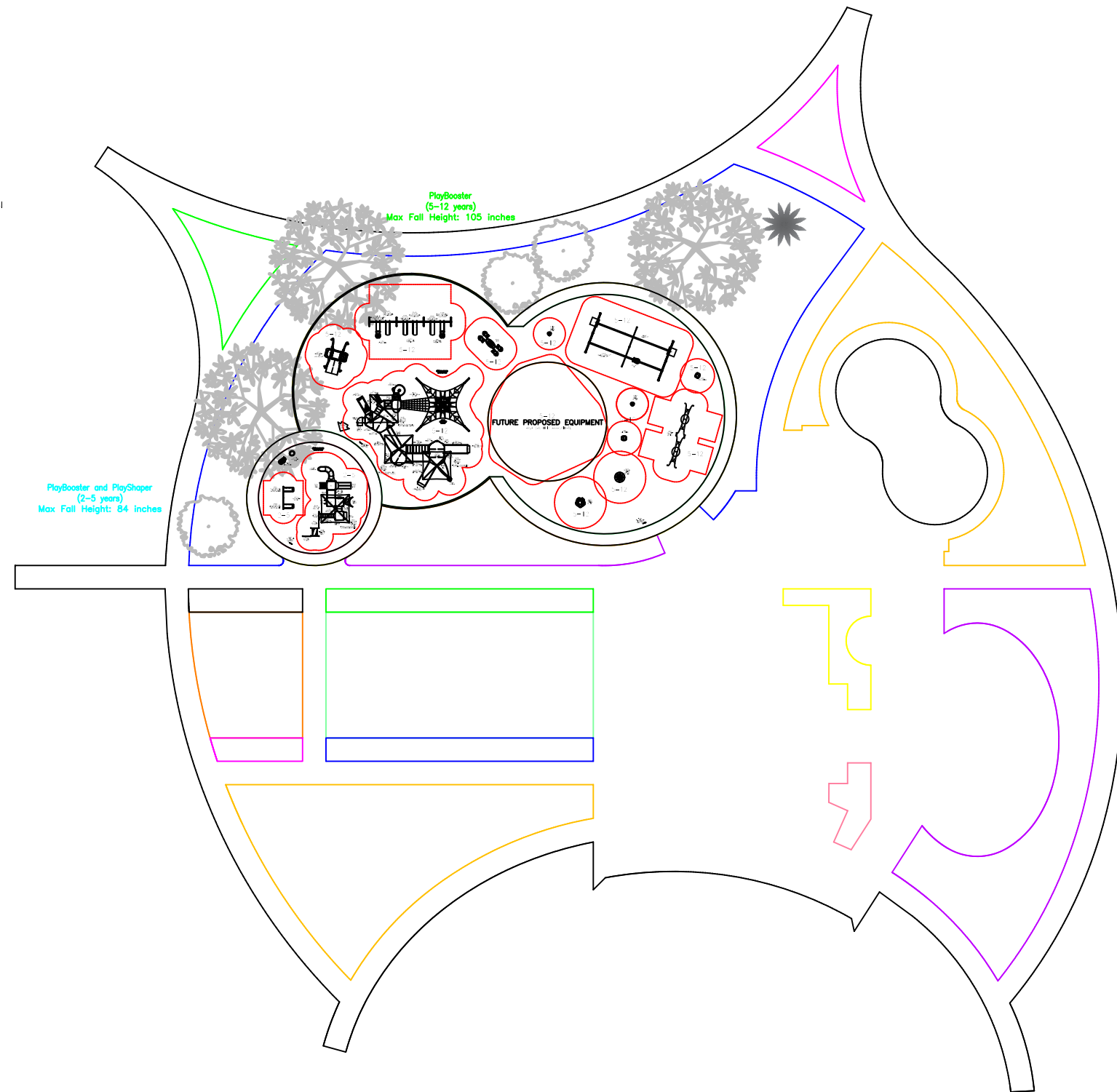
1188290-01-03_FS-Rev • 1.23.2025

flagship
recreation

© 2025 Landscape Structures. All Rights Reserved



SUGGESTED RAMP BEAM EXIT PLATE
8" / 12" DECK TO GRADE/DR / RESILIENT SURFACING INSTALLATION
REFER TO RAMP BEAM EXIT PLATE INSTALLATION SHEET



5-12 COUNT DOES NOT INCLUDE PROPOSED FUTURE EQUIPMENT

TOTAL ELEVATED PLAY COMPONENTS	16		
TOTAL ELEVATED COMPONENTS ACCESSIBLE BY RAMP	6	REQUIRED	0
TOTAL ELEVATED COMPONENTS ACCESSIBLE BY TRANSFER	12	REQUIRED	8
TOTAL ACCESSIBLE GROUND LEVEL COMPONENTS SHOWN	22	REQUIRED	5
TOTAL DIFFERENT TYPES OF GROUND LEVEL COMPONENTS	13	REQUIRED	13

2-5

TOTAL ELEVATED PLAY COMPONENTS	9		
TOTAL ELEVATED COMPONENTS ACCESSIBLE BY RAMP	0	REQUIRED	0
TOTAL ELEVATED COMPONENTS ACCESSIBLE BY TRANSFER	9	REQUIRED	5
TOTAL ACCESSIBLE GROUND LEVEL COMPONENTS SHOWN	6	REQUIRED	3
TOTAL DIFFERENT TYPES OF GROUND LEVEL COMPONENTS	5	REQUIRED	5

landscape structures



The play components identified on this plan are IPEMA certified. (Unless model number is preceded with *) The use and layout of these components conform to the requirements of ASTM F1497. To verify product certification, visit www.ipema.org.

THIS PLAY AREA & PLAY EQUIPMENT IS DESIGNED FOR AGES **2-12 YEARS** UNLESS OTHERWISE NOTED ON PLAN.

IT IS THE MANUFACTURERS OPINION THAT THIS PLAY AREA DOES CONFORM TO THE A.D.A. ACCESSIBILITY STANDARDS, ASSUMING AN ACCESSIBLE PROTECTIVE SURFACING IS PROVIDED, AS INDICATED, OR WITHIN THE ENTIRE USE ZONE.

THIS CONCEPTUAL PLAN WAS BASED ON INFORMATION AVAILABLE TO US, PRIOR TO CONSTRUCTION. DETAILED SITE INFORMATION INCLUDING SITE DIMENSIONS, TOPOGRAPHY, EXISTING UTILITIES, SOIL CONDITIONS, AND DRAINAGE SOLUTIONS SHOULD BE OBTAINED, EVALUATED, & UTILIZED IN THE FINAL DESIGN. PLEASE VERIFY ALL DIMENSIONS OF PLAY AREA, SITE ORIENTATION, AND LOCATION OF ALL EXISTING UTILITIES, EQUIPMENT, AND SITE FURNISHINGS PRIOR TO ORDERING. STUDIES SHOULD NOT FACE THE HOT AFTERNOON SUN.

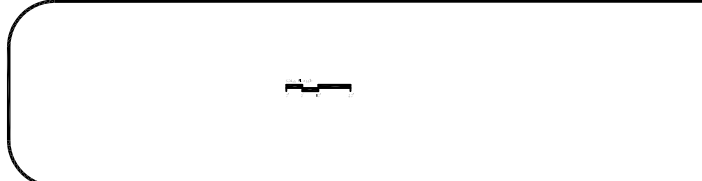
CHOOSE A PROTECTIVE SURFACING MATERIAL THAT HAS A CRITICAL HEIGHT VALUE TO MEET THE MAXIMUM FALL HEIGHT FOR THE EQUIPMENT (REF. ASTM F1497 STANDARD CONSUMER SAFETY PERFORMANCE SPECIFICATION FOR PLAYGROUND EQUIPMENT FOR PUBLIC USE, SECTION 8 CURRENT REVISION). THE SUBSURFACE MUST BE WELL DRAINED. IF THE SOIL DOES NOT DRAIN NATURALLY IT MUST BE TILED OR SLOPED 1/8" TO 1/4" PER FOOT TO A STORM SEWER OR A "FRENCH DRAIN".

AREA OF ACCESSIBLE/PROTECTIVE SURFACING (POURED-IN-PLACE SUGGESTED)

DESIGNED BY:

GLG
 COPYRIGHT: 10/31/24
 LANDSCAPE STRUCTURES INC.
 601 7th STREET SOUTH
 DELAND, MINNESOTA 55328
 PH: 888-438-6574
glgllc.com

8/19/24	1188290-01-01	JLZT/ALK
Date	Previous Drawing #	Initials



Fridley - Commons
Park Inclusive Playground
Fridley, MN

Flagship Recreation
Brett Altergott

SYSTEM TYPE:
PlayBooster

DRAWING #:
1188290-01-03



State Contract #218091**PROJECT INFORMATION**

Project name	Commons Park
Address	555 61st Ave NE
City, State ZIP	Fridley, MN 55432
Contract Year	2025

EQUIPMENT INFORMATION & PRICING

<u>Qty</u>	<u>Item No.</u>	<u>Description</u>	<u>Price</u>	<u>Ext Price</u>
1		Volo Aire	\$300,000	\$300,000.00
1	111228A	Square Tenderdeck	\$1,403	\$1,403.00
4	111231A	Triangular Tenderdeck	\$1,081	\$4,324.00
1	111240A	Balcony Deck	\$1,754	\$1,754.00
4	111275A	Handloop Assembly	\$326	\$1,304.00
4	111404D	124"Alum Post DB	\$485	\$1,940.00
2	111404E	116"Alum Post DB	\$423	\$846.00
4	111404F	108"Alum Post DB	\$403	\$1,612.00
4	111404G	100"Alum Post DB	\$398	\$1,592.00
4	111404H	92"Alum Post DB	\$377	\$1,508.00
8	111404I	84"Alum Post DB	\$367	\$2,936.00
2	111404K	156"Alum Post DB	\$602	\$1,204.00
1	111404O	132"Steel Post DB	\$403	\$403.00
4	111404W	156"Steel Post DB	\$566	\$2,264.00
1	114665A	Arch Bridge (42")	\$3,162	\$3,162.00
1	115229A	Finger Maze Panel Above Deck	\$984	\$984.00
1	115231A	Tic-Tac-Toe Panel Above Deck	\$1,989	\$1,989.00

1	116244A	Pipe Barrier Above Deck	\$852	\$852.00
1	117146A	Gear Panel Above Deck	\$2,637	\$2,637.00
1	119514A	Pilot Panel Above Deck	\$1,530	\$1,530.00
1	119613A	Wave Horizontal Ladder	\$1,821	\$1,821.00
3	119646A	Tri-Deck Extension	\$1,051	\$3,153.00
2	120325A	Ramp Berm Exit Plate Concrete Wall	\$561	\$1,122.00
3	121948A	Kick Plate 8"Rise	\$153	\$459.00
1	122570D	Cliff Climber 72"Dk DB	\$2,933	\$2,933.00
1	123333A	Rollerslide 40"Dk DB	\$10,292	\$10,292.00
1	127678A	Match 4 Panel Above Deck	\$1,326	\$1,326.00
1	152907C	Deck Link w/Barriers Steel end panels 3 Steps	\$3,647	\$3,647.00
1	152911A	Curved Transfer Module Right 32"Dk DB	\$3,239	\$3,239.00
1	154752A	Hex Deck w/One Extension	\$6,237	\$6,237.00
3	154883F	301"Steel Post (72" Bury) For CoolTopper Single Post Pyramid Roof	\$1,749	\$5,247.00
3	154884A	CoolToppers Single Post Pyramid Roof DB Only	\$4,503	\$13,509.00
4	156232A	Ramp w/Guardrails w/Curbs Meets ASTM	\$5,748	\$22,992.00
1	173564A	Optigear Panel Above Deck	\$4,580	\$4,580.00
1	173567A	Marble Panel Above Deck	\$3,198	\$3,198.00
1	174448A	SpaceLink Climber to 72" Deck Attached to Square Deck	\$8,140	\$8,140.00
1	176081A	Canyon Climber	\$2,009	\$2,009.00
2	178710A	Hexagon Tenderdeck	\$4,004	\$8,008.00
1	188835A	Sign Language Panel Above Deck	\$1,183	\$1,183.00
1	201545A	Blender Spinner DB	\$3,407	\$3,407.00
1	222708A	WhooshWinder Slide 72"Dk DB	\$6,895	\$6,895.00
INDEPENDENT:				
4	174018A	Belt Seat ProGuard Chains for 8' Beam Height	\$168	\$672.00
1	177351A	Molded Bucket Seat (5-12 yrs) w/Harness ProGuard Chains for 8' Beam Heig	\$1,163	\$1,163.00
1	182503C	Welcome Sign (LSI Provided) Ages 5-12 years Direct Bury	\$0	\$0.00
1	182504C	Welcome Sign Ages 5-12 years Direct Bury	\$485	\$485.00
1	185927A	Flywheel Spinner DB Only	\$4,549	\$4,549.00

1	186490A	We-saw DB Only	\$14,469	\$14,469.00
1	194663A	ZipKrooz 34' w/Aluminum Posts DB	\$16,228	\$16,228.00
1	196213A	ZipKrooz Assisted Additional Bay 34' w/Aluminum Posts DB	\$14,025	\$14,025.00
1	205800A	TopsyTurny Spinner 42"Bury DB Only	\$6,737	\$6,737.00
1	210117A	Oodle Swing Double DB Only	\$15,433	\$15,433.00
1	218671C	Molded Bucket Seat (2-5 yrs) w/Harness ProGuard Chains for 8' Beam Heigh	\$1,163	\$1,163.00
1	221292A	5" Arch Swing Frame 8' Beam Height Only	\$3,738	\$3,738.00
2	221293A	5" Arch Swing Frame Additional Bay 8' Beam Height Only	\$2,275	\$4,550.00
2	247179A	Curva Spinner DB Only	\$2,555	\$5,110.00
2	247189A	Chill Spinner DB	\$2,795	\$5,590.00
1	248945A	Lunar Burst DB Only	\$28,504	\$28,504.00
1	277778A	We-Go-Swing w/1 Accessible Bay DB Only	\$41,789	\$41,789.00
4	111237A	Square Tenderdeck	\$1,066	\$4,264.00
2	111284A	Hole Panel	\$638	\$1,276.00
1	111364A	Loop Ladder 48"Dk DB	\$1,270	\$1,270.00
2	111397A	128"Post DB	\$485	\$970.00
6	111397B	114"Post DB	\$403	\$2,418.00
2	111397C	106"Post DB	\$398	\$796.00
4	111397D	98"Post DB	\$383	\$1,532.00
1	111397E	90"Post DB	\$377	\$377.00
1	111397F	82"Post DB	\$367	\$367.00
4	111397G	74"Post DB	\$352	\$1,408.00
1	111397H	69"Post DB	\$347	\$347.00
1	118099A	Wire Crawl Tunnel Ground Level	\$2,754	\$2,754.00
1	119977A	Handbar	\$250	\$250.00
1	119981A	Step Deck DB	\$1,071	\$1,071.00
1	127685A	Image Panel - 176 Block Above Deck	\$1,749	\$1,749.00
1	129967A	Horizontal Ladder	\$1,290	\$1,290.00
1	129968A	Horizontal Ladder End Panel	\$403	\$403.00

1	131956A	Belt Bridge	\$2,244	\$2,244.00
1	132023B	Cozy Climber Perm Handholds 48"Dk DB	\$3,590	\$3,590.00
1	132117C	SlideWinder2 48"Dk DB 2 Left	\$3,555	\$3,555.00
1	132155B	Double Slide 48"Dk DB	\$2,815	\$2,815.00
1	143200A	Conical Climber DB	\$4,391	\$4,391.00
1	144984A	Storefront Panel	\$571	\$571.00
1	153021B	Deck Link 2 Steps	\$1,805	\$1,805.00
1	154883A	265"Steel Post (60" Bury) For CoolTopper Single Post Pyramid Roof	\$1,341	\$1,341.00
1	154884A	CoolToppers Single Post Pyramid Roof DB Only	\$4,503	\$4,503.00
1	177719A	Rain Sound Wheel Panel Above Deck	\$2,820	\$2,820.00
1	179349A	Kick Plate 8"Rise	\$153	\$153.00
1	238043A	PS/Shade Bracket Kit	\$286	\$286.00

INDEPENDENT:

2	176038G	Full Bucket Seat ProGuard Chains for Toddler Swing	\$469	\$938.00
1	177336A	Toddler Swing Frame DB Only	\$1,499	\$1,499.00
1	182503A	Welcome Sign (LSI Provided) Ages 2-5 years Direct Bury	\$0	\$0.00
1	228213A	Rhapsody Jingle Metallophone DB	\$4,452	\$4,452.00
1	228217A	Rhapsody Kettle Drum Junior DB	\$1,918	\$1,918.00

Total Equipment Cost at State Contract Pricing

\$671,269.00



City of Fridley
 7071 University Ave. NE
 Fridley, MN 55432
 Mike Maher - Parks & Recreation Director

PRELIMINARY BUDGET - THIS IS AN ESTIMATE & NOT A FORMAL QUOTE

	Preliminary Budget	Possible Additions	Possible Reductions	QTY	Notes
Play Equipment					
Commons Park - 1188290-01-03 (Volo Aire)	671,269.00				2025 State Contract Price
State Contract #218091	(53,701.52)			8%	(6% discount under \$80,000 & 8% discount \$80,000 & above)
Sales Tax - if applicable	0.00				ST3 Certificate of Exemption must be provided by owner.
Delivery of Play equipment	1,800.00				Estimated / Final quote will be provided upon final design.
Mobilization	750.00				Mobilization of Installation Crew to Job Site (Trailer Skid Steer Augur, Tools, Mixer, Etc.)
Dumpster(s) - 30 Yard	2,250.00				Disposal of packaging material - Deduct if Provided by Owner/Volunteers
Site work	General Contractor				
Border Options	General Contractor				
Equipment Installation (Labor & Concrete for Footings)	151,119.28			24.47%	Full professional installation by Landscape Structures Certified Installers. Standard labor rate unless otherwise noted
Special Equipment (Lull, Lift, Compactor, etc.)	1,618.59				Rental - Req'd for Shade Fabric, Roofs, etc.
Concrete Flatwork	General Contractor				
Subgrade Prep & Poured In Place (PIP) or Turf Surfacing					
Compacted Aggregate Base (Recycled Concrete or Class 5) (Tons)	43,105.75			652	Class 5 Agg w/ Fines or Recycled Concrete, Material & Install 4" - 6" Compacted Required for PIP & Turf Installations
Drain Tile (LF)	16,806.40			780	Wrapped w/ Clear Agg - Drain Stubs Req'd Inside Container. Connect to outlet provided by others
Poured In Place Rubber Surfacing (Sq. Ft.)	318,179.56			16,745	50/50 mix of Standard Colors/Black Speckled (Designs & Premium Colors Extra)
Security Guard	TBD				24 Hr Site Security req'd during Installation & Cure Time. Cure Times vary with weather and thickness. Defects or damage due to trespass before sufficient cure time will not be covered by warranty. Flagship Rec not licensed for Security Services.
Site Restoration (Sq.Ft.)	General Contractor			0	Backfilling Req'd to Stabilize Border - Not Responsible for "Movement" - Not Included
Payment & Performance Bonds	34,595.91				Included By Request
	Budget Total	Total Additions	Total Reductions		Total w/ Additions & Reductions
	1,187,792.96	0.00	0.00		1,187,792.96



AGENDA REPORT

Meeting Date: February 3, 2025

Meeting Type: Parks and Recreation Commission

Submitted By: Mike Maher, Parks and Recreation Director

Title

Commons Park Splash Pad Final Design Review

Background

The Commons Park Splash Pad has been developed through funding from the approved Park System Improvement Plan and a \$350,000 matching grant from the Minnesota DNR Outdoor Recreation program. The splash pad was designed by Flagship Recreation, who represents Aquatix, a division of Landscape Structures, who the City has been using for most of our recent playground projects.

An initial design for the splash pad was prepared and shared online and at a series of public meetings during the summer of 2024 for community input. Several refinements were made to the design based on comments received and feedback has been overwhelmingly positive.

Colors shown in the proposal are not final and will be modified to compliment the color scheme selected for playground equipment.

Financial Impact

The cost for equipment and installation of the splash pad is \$700,359.80. There are additional indirect costs for site preparation that will be included under the scope of other contractors. Commons Park construction bids will be presented to City Council for approval.

Recommendation

Staff recommends that the Commission consider a motion to endorse the splash pad design and budget.

Attachments and Other Resources

- Updated budget Commons Park Splash Pad 1-17-25.pdf

Vision Statement

We believe Fridley will be a safe, vibrant, friendly and stable home for families and businesses.

Item 3.

aquatix
by landscape structures

952.445.5135 | 877.632.0503
aquatix.playlsi.com

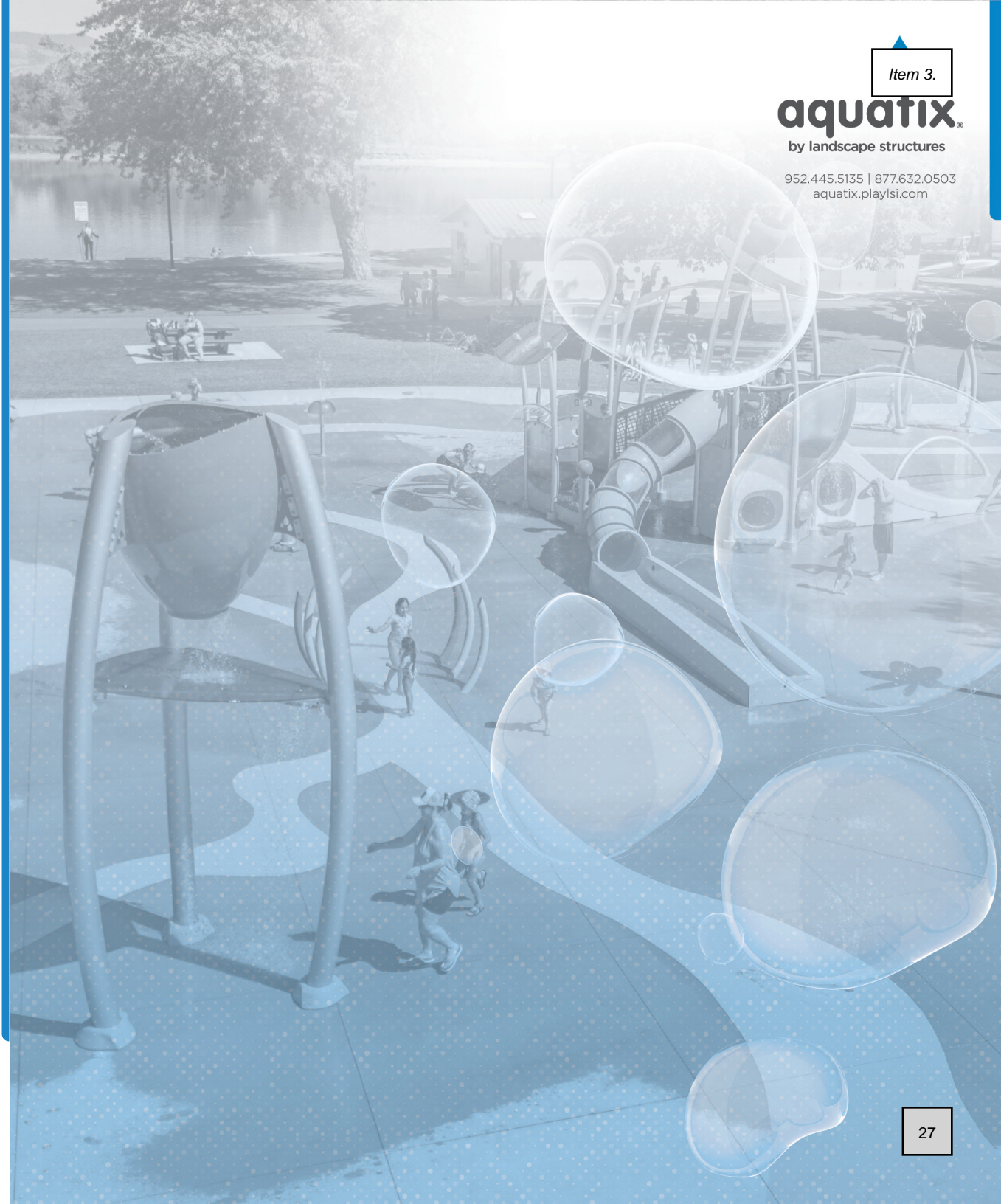
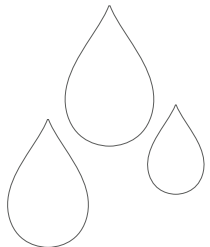


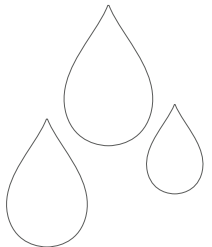
PROUDLY PRESENTED BY

Brett Altergott
Flagship Recreation
brett@flagshipplay.com
(763) 550-7860

Fridley - Commons Park

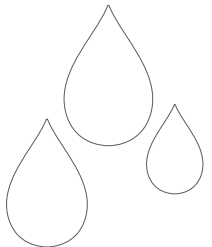
Design# 1183176-01-04 12/19/24



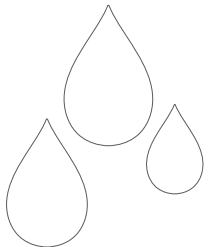


Fridley - Commons Park
 Design# 1183176-01-04 12/19/24





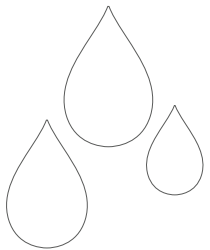
Fridley - Commons Park
 Design# 1183176-01-04 12/19/24



Fridley - Commons Park
Design# 1183176-01-04 12/19/24



Water, being naturally inclusive, combined with splash play bring together people of all ages and abilities in a world of fun, learning and sensory exploration. Aquatix innovative water features allow for hands-on education tailored to every development stage. The designers at Aquatix work to deliver an educational, exploratory design that encourages physical and social development, with the ability to grow confidence while engaging in the play elements around them. This inclusive approach not only enhances community connection but also ensures there's something for everyone, making it a vibrant hub for social interaction, relaxation and unforgettable memories.



Fridley - Commons Park
 Design# 1183176-01-04 12/19/24

GENTLE ACTIVITY ZONE INFANT/TODDLER

Learning to enjoy texture and water

- Lower, delicate ground sprays
- Lower structures with gentle water formations
- Placement of features close to perimeter and dry zones ensure easy adult supervision and interaction

UNIVERSAL ZONE ALL AGES

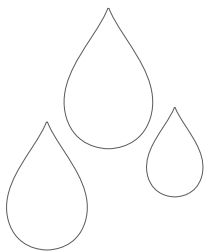
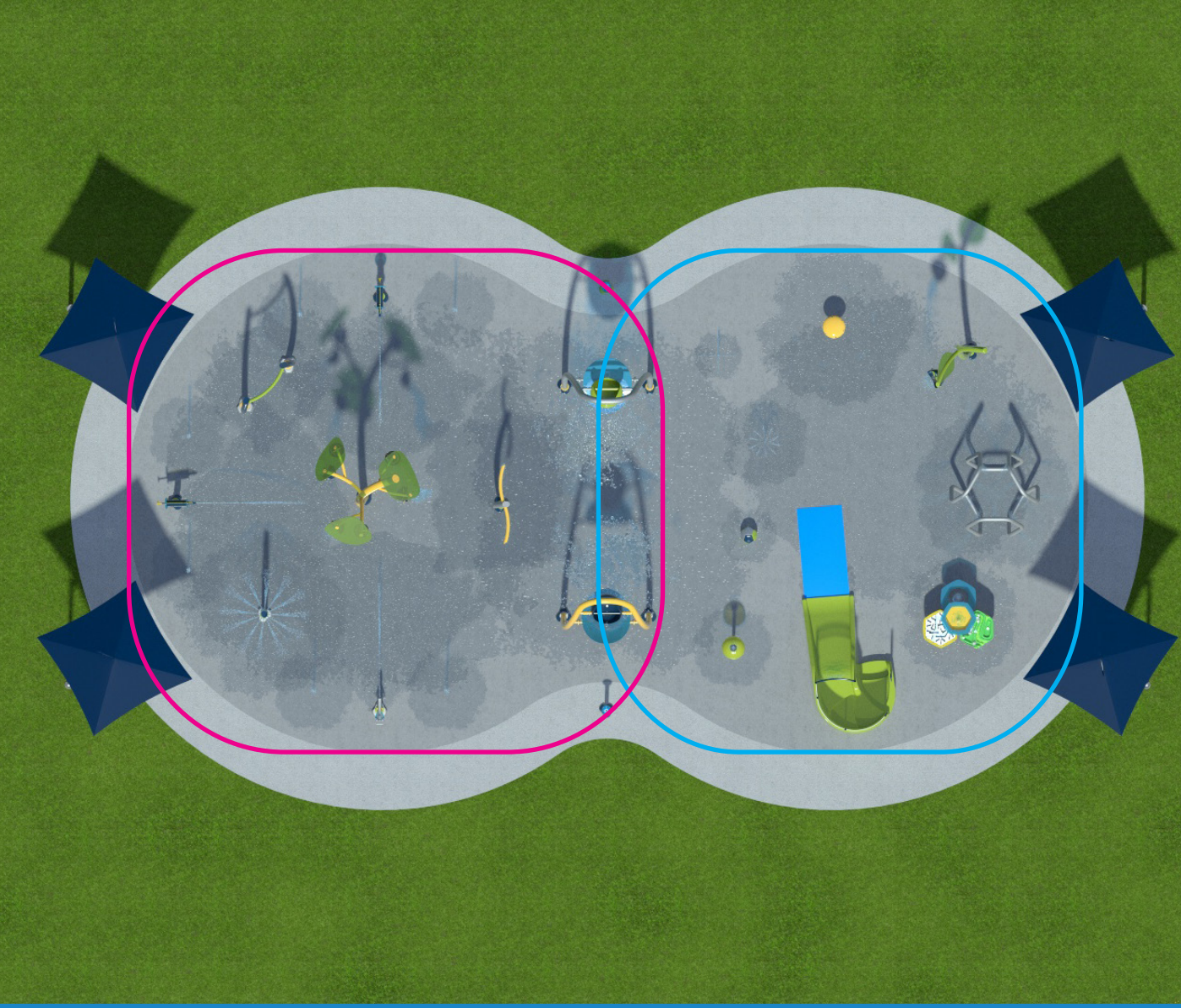
Variety of structures for the whole family

- Unique water formations pour, dump, spray wiggle, launch and spin
- Combines ground spray and structures for all ages
- Centrally placed in splash pad and often a transition zone from Gentle activity to Dynamic

DYNAMIC ZONE 7+ YEARS

Continual excitement and interaction

- High Volume, highly interactive spray features and Climb N Play structures
- Combination of sprays and structures
- Placement of features close to perimeter and dry zones ensure easy adult supervision and interaction



Fridley - Commons Park

Design# 1183176-01-04 12/19/24

DESIGN DETAILS

* Surface finishes and/or site furnishings shown are conceptual and provided by others.

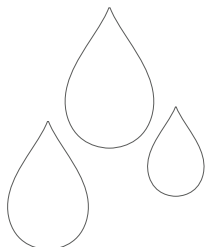


PROUDLY PRESENTED BY

Brett Altergott
Flagship Recreation
brett@flagshipplay.com
(763) 550-7860

Fridley - Commons Park

Design# 1183176-01-04 12/19/24



PROPOSED COLORS

PAINT COLORS



ACRYLIC COLOR(S)



PROJECT DETAILS

PROJECT DIMENSIONS

55' 0" × 95' 0"
LENGTH WIDTH

TOTAL SYSTEM FLOW RATE

208 Gallons
GPM (GALLONS PER MINUTE)

SITE FURNISHINGS

model number
SKYWAYS MODEL #237672 (x4)

COLOR APPROVAL

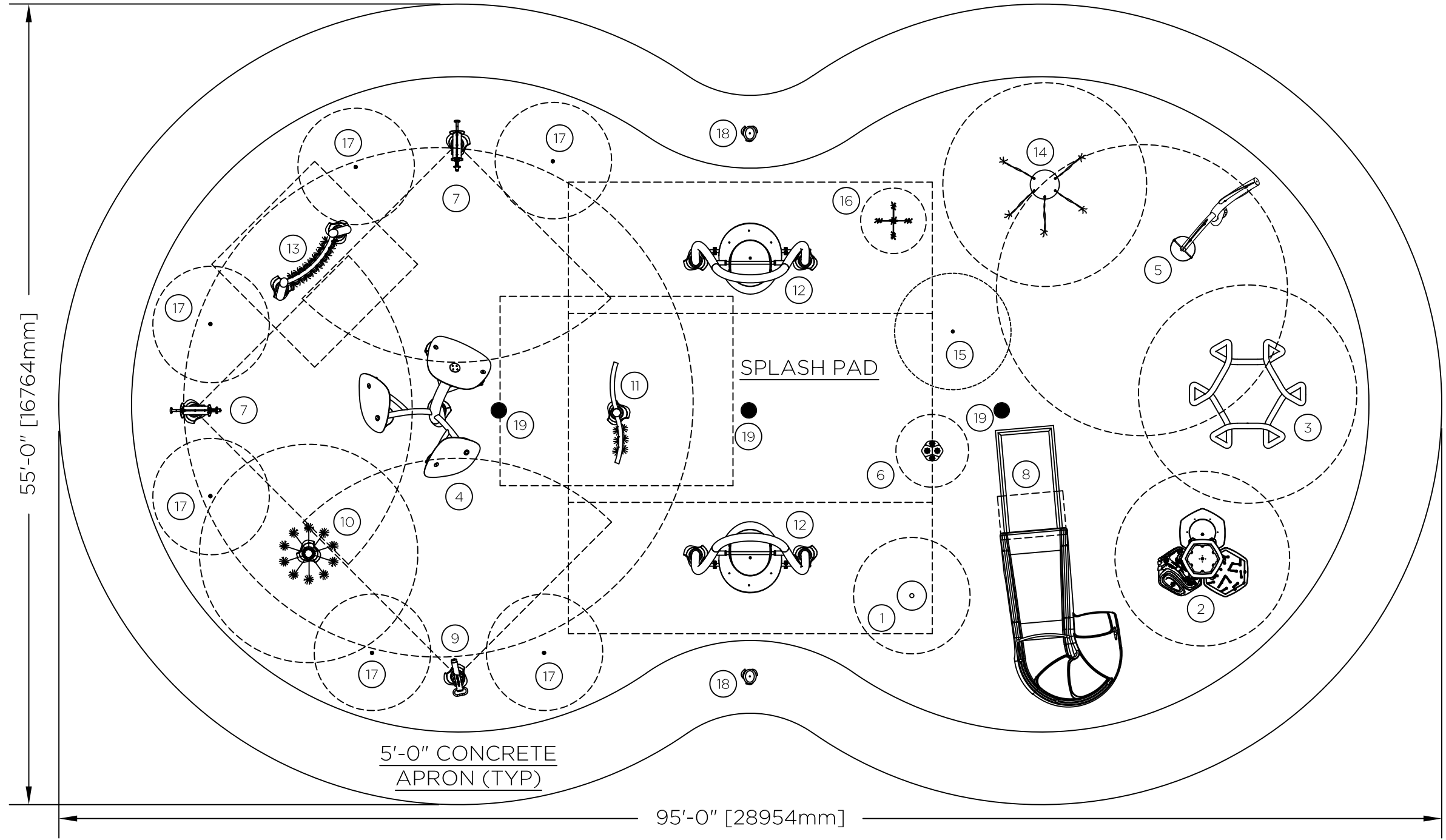
CUSTOMER SIGNATURE

DATE

*Colors shown are for representation purposes.
Consult with your Representative for actual color swatches for final color selection.

NO	PRODUCT	QTY	LINE SIZE	GPM
1	ACRYLIC TOT SHOWER DOME	1	1"	5
2	AQUAGATHER	1	1"	10
3	AQUAHEDRA	1	1 1/2"	15
4	CANOPY CLUSTER W/ACRYLIC	1	2"	45
5	CANOPY BUCKET W/ACRYLIC	1	1"	7
6	GEOMISTER LARGE	1	1 1/2"	4
7	JET STREAM	2	1" EA	5EA
8	NAUTILUS 1	1	1 1/2"	10
9	ROCKETSTREAM	1	1"	5
10	SPRAYSTACKER	1	1 1/2"	20
11	UNIFLOW	1	1"	5
12	VERSOSPLASH	2	1 1/2"EA	20EA
13	WATERWAY	1	1"	10
14	WHIRLPAD	1	1"	6
15	FUNNEL TWIST	1	1"	5
16	SEA CRAWLER	1	1"	5
17	STREAM JET	6	1" EA	1EA
18	AQUAVATOR	2	---	---
19	DRAIN BOX	3	---	---

SPLASH PAD AREA: 3,165 SQ. FT.
 APRON AREA: 1,212 SQ. FT.
 TOTAL AREA: 4,377 SQ. FT.
 TOTAL FEATURE FLOW RATE: 208 GPM



PRELIMINARY
 FOR BID ONLY

NOT FOR
 CONSTRUCTION

DATE	12/19/24	JOB TITLE	FRIDLEY - COMMONS PARK	ITEM NO.	Item 3.
REVISION		LOCATION	FRIDLEY, MN		
NO.					
 aquatix by landscape structures					
SCALE	NOT TO SCALE	CHECKED			
DRAWN	RB	DWG. FILE			
PROPOSED SPLASH PAD SCHEMATIC LAYOUT					
JOB NO. 1183176-01-04					
1 OF 34					

State Contract Pricing #218091



PROJECT INFORMATION

Project name	Commons Park
Address	6249 7th St. NE
City, State ZIP	Fridley, MN 55432
Contract Year	2025

EQUIPMENT INFORMATION & PRICING

<u>Qty</u>	<u>Item No.</u>	<u>Description</u>	<u>Price</u>	<u>Ext Price</u>
1	AQ101109	Acrylic Tot Shower Dome	\$5,263	\$5,263.00
1	AQ100767	AquaGather	\$22,134	\$22,134.00
1	AQ101157	AquaHedra®- SS	\$28,178	\$28,178.00
1	AQ100693	Canopy Cluster w/Acrylic	\$31,345	\$31,345.00
1	287190	Canopy Bucket w/Acrylic	\$15,234	\$15,234.00
1	AQ100752	Large GeoMister	\$4,355	\$4,355.00
2	AQ100835	Jet Stream	\$10,817	\$21,634.00
1	AQ100844	Nautilus1	\$37,307	\$37,307.00
1	AQ100819	RocketStream	\$8,711	\$8,711.00
1	AQ200303	SprayStacker	\$12,158	\$12,158.00
1	AQ101055	UniFlow	\$14,168	\$14,168.00
2	AQ101095	VersoSplash®	\$36,766	\$73,532.00
1	AQ100785	WaterWay	\$15,361	\$15,361.00
1	AQ200501	WhirlPad	\$9,302	\$9,302.00
1	316626	Funnel Twist- SS	\$765	\$765.00
1	AQ101160	Sea Crawler- SS	\$765	\$765.00
6	AQ101159	Stream Jet - SS	\$765	\$4,590.00

WATER PLAY FEATURES TOTAL

\$304,802.00

1	Mechanical Components	\$55,415.00
1	Design Services	\$4,096.00
1	Sealed Engineer Stamp	\$2,560.00

MECHANICAL & ENGINEERING TOTAL

\$62,071.00

1 **System Startup & Training** **\$765.00**

4	237675F SkyWays Cantilever Single Post Pyramid - 16'x16' w/ 10' entrance & rapid release	\$12,322	\$49,288.00
---	--	----------	-------------

SHADE TOTAL

\$49,288.00

GRAND TOTAL

\$416,926.00



Proposal

Dated:	12/19/2024	Project Name:	Fridley - Commons Park
Prepared For:	Brett Altergott Flagship Recreation 763-550-7860 brett@flagshipplay.com	Aquatix Proposal Number:	1183176-01-04
			Total GPM: 208

It is our understanding that Aquatix by Landscape Structures is to provide the following water play features for the above referenced project.

Water Play Features

<u>Qty</u>	<u>Description</u>	<u>Model #</u>
1	Acrylic Tot Shower Dome	AQ101109
1	AquaGather	AQ100767
1	AquaHedra®- SS	AQ101157
1	Canopy Cluster w/Acrylic	AQ100693
1	Canopy Bucket w/Acrylic	287190
1	Large GeoMister	AQ100752
2	Jet Stream	AQ100835
1	Nautilus1	AQ100844
1	RocketStream	AQ100819
1	SprayStacker	AQ200303
1	UniFlow	AQ101055
2	VersoSplash®	AQ101095
1	WaterWay	AQ100785
1	WhirlPad	AQ200501
1	Funnel Twist- SS	316626
1	Sea Crawler- SS	AQ101160
6	Stream Jet - SS	AQ101159

Water play feature design notes:

- All above water play features are to be the standard product of Aquatix by Landscape Structures.
- All ground spray features are imbedded and installed prior to concrete being poured.
- Pricing reflects painted products.
- Additional fees may apply for products to be powder coated.
- Any surface finishes shown on renders are conceptual and provided by others.
- Level mounting area required for all products.
- Above ground features are surface mounted and are not intended to be a direct replacement. See retrofit disclaimer under general conditions.
- Recommended Pool Water Depths:
 - Do not exceed 6" water depth on our underwater bubbler and structures up to 24" tall
 - Do not exceed 12" water depth on structures up to 48"
 - Do not exceed 18" water depth on structures taller than 48"
 - Do not exceed 12" water depth on Multi Level platforms . No water spray or crawl tunnels to be underwater.

Domestic Water System:

2 **Aquavator**

To consist of a stainless-steel activation bollard with bulldog touch sensor that will signal a control panel to activate feature supply system for set duration of time.

1 **Control Panel - Sequencing**

To be a UL listed control panel with integrated color touchscreen that will provide complete operating system power and controls. Programmable features allow customization of hours of operation, feature sequencing, and activate water flow via a touch enabled activation device. System is also internet enabled to allow remote access (requires network connection, by others). Optional waste valve connection included. Typical electrical requirements for sequencing domestic systems are 120v 1/Ph 60hz

3 **Drain Box**

To consist of a 13" diameter PVC sump and HDPE grate top. Each collector box has a nominal capacity of 120 gpm gravity supply to waste outlet

1 **Distribution Manifold - Sequencing**

To consist of a Sch. 80 PVC distribution manifold with electric solenoid valves for sequencing on / off of water play elements and manual valves for adjusting water flows to water play elements. Solenoids and valves provided for field installation.

1 **Aboveground Mechanical Enclosure**

To consist of metal structure with hinged access panels mounted on a concrete pad. Above ground equipment enclosures house the control panel and water distribution manifold. Enclosure is vented to allow for air movement and lower screened drain openings. Enclosure size (L x W x H): 118" x 42" x 46"

Mechanical system design notes:

- All mechanical components are per the described products above. If there are code requirements that have different product capabilities, Aquatix will need to be notified for a revised proposal. Aquatix is not responsible for specific code related requirements.
- If you want Wi-Fi capabilities on the control panel, please inform your Aquatix consultant.

Design & Construction drawings:

Including: All design and construction drawings for splash pad project construction to consist of construction of concrete pad, mechanical system, electrical and control systems, imbed spray fixtures / collector box installation details, water play structure assembly / installation on concrete splash pad, equipment systems installation and hookups.

Splash Pad Design Notes:

1. Aquatix by Landscape Structures design services are based on ideal site locations and conditions.
2. Aquatix by Landscape Structures design services do not include soil corrections, demolition planning, site elevation plans, utility planning / design or relocation of utilities. (i.e. based on water, waste and power being available at designed areas of splash pad by others.)
3. All permits and costs of permits are not included in our splash pad design package.
4. Design package will be prepared based on Aquatix's interpretation of Local health code.
5. The fee for design services is non-commissionable.
6. Any additional drawings associated with projects outside of splash pad to be made by others. (sidewalks, landscaping, electrical)

*Mini design package is available upon request.

Sealed Engineer Stamp:

Aquatix by Landscape Structures to have drawings stamped by a licensed PE in the State of project. The fee for design services is non-commissionable.

Please note: Subsequent requests for additional revisions and PE Stamps can result in additional charges ranging between \$1,500-\$4,000 per stamp.

Lead times for revisions will vary based on timing and detail.

System Startup and Training:

Aquatix by Landscape Structures to provide (1) factory direct technician for (2) day of system startup, balancing, and owner training. Aquatix requires 2-4 weeks advance notice depending on seasonal demand.



City of Fridley
 7071 University Ave. NE
 Fridley, MN 55432
 Mike Maher - Parks & Recreation Director

PRELIMINARY BUDGET - THIS IS AN ESTIMATE & NOT A FORMAL QUOTE

	Preliminary Budget	Possible Additions	Possible Reductions	QTY	Notes
Play Equipment					
Aquatix Design (1183176-01-04)	304,802.00				2025 List Price of Equipment
State Contract Discount #218091	(15,240.10)			5%	5% discount on water play features
Mechanical Components	55,415.00				
Design Services	6,656.00				
Sales Tax - if applicable	Tax Exempt				
SkyWays Shades - 16'x16 Single Post Cantilever (237675F)	49,288.00				2025 List Price of Equipment
State Contract Discount #218091	(3,943.04)			8%	6% discount under \$80,000 & 8% discount \$80,000 & above
Sales Tax - if applicable	Tax Exempt				
Delivery of Play equipment	3,940.00				ESTIMATED. Splash pad ships from Delano, MN & shade from Dallas, TX. Need to requote shade freight.
State Health Department Permit	1,875.00				Submittal of permit to the State of MN Health Dept. Submittal requires stamped plan from Aquatix & pages from civil plan
Mobilization	750.00				
Dumpster(s) - 30 Yard	750.00				Disposal of packaging material
Splash Pad Installation	262,546.32				Installation includes: site prep-earth work - granular materials, mechanicals - materials & install, electrical, concrete (wet pad & dry apron), spary feature assembly/install.
Shade Footings	11,394.87				Estimate does not include Sonotubes
Shade Assembly	5,090.40				Prevailing wage
Lift Rental	1,767.50				Lift rental for shade install
System Startup & Training	765.00				1 factory technician for 2 day system startup, balancing & owner training. 2-4 week advanced notice depending upon season command
Payment & Performance Bonds	14,502.84				Payment & performance bonds are available within 3 business days from receipt of PO.
	Budget Total	Total Additions	Total Reductions		Total w/ Additions & Reductions
	700,359.80	0.00	0.00		700,359.80



AGENDA REPORT

Meeting Date: February 3, 2025

Meeting Type: Parks and Recreation Commission

Submitted By: Mike Maher, Parks and Recreation Director

Title

Election of Vice Chair

Background

Per Fridley code 105.02, each commission shall annually elect a vice chairperson. At any meeting of the commission if the chairperson is unable to attend, the vice chairperson shall act as the chairperson.

Financial Impact

None

Recommendation

Staff recommends the Commission accepts nominations for the chairperson role and vote on any nominated individuals to elect a vice chair for 2025.

Attachments and Other Resources

- None

Vision Statement

We believe Fridley will be a safe, vibrant, friendly and stable home for families and businesses.



AGENDA REPORT

Meeting Date: February 3, 2025

Meeting Type: Parks and Recreation Commission

Submitted By: Tara Rogness, Springbrook Nature Center Manager

Title

Springbrook Nature Center Report

Background

Attached is the update from Springbrook Nature Center for the February 3, 2025 Parks and Recreation Commission meeting.

Financial Impact

None.

Recommendation

None.

Attachments and Other Resources

- Springbrook Nature Center Update for February 3, 2025 meeting

Vision Statement

We believe Fridley will be a safe, vibrant, friendly and stable home for families and businesses.

Springbrook Nature Center Park & Rec Commission Report

January Environmental Education Programming

January is typically a month of fewer programs and more projects at Springbrook.

Number of Participants: 359

Number of Hours of Programming: 467.5

January Rentals & Birthday Parties

- There were 2 birthday parties in January.
- In January, there were 5 indoor room rentals.

Grants

- We have been awarded a grant from The International Paper Foundation for a project entitled "Culture and Team Building in Nature" in which we aim to enhance our team building programming with portable low ropes challenges that will create perceived risk and aid in communication, active listening, trust, leadership, and social emotional skills in children and adults.

Park & Building Maintenance

- We have submitted a warranty claim on a component of the Cliff Rider in the Nature Play Area. It has been accepted and we will receive the part for replacement sometime this winter.
- The volume levels of the Audio/Visual system microphone and other sources have been adjusted in the classrooms. In addition, there are a number of programming bugs that are being repaired.

Events

- **Lantern Light Hike** programs run December through March on the first Friday evening of each month from 6:30 – 8:30 pm. This serene program is great for all ages and is a great way to still get outside during our shorter light months. \$5 per person, children 2 and under are free, and if there's enough snow, there will be snowshoes for rent for an additional \$5.
- **Winterfest** is on its way. Mark your calendars for January 25th from noon – 3 pm. There will be a variety of activities to participate in that will help you love the MN winters even more!
- The **Winter Gear Drive** begins on December 1 and runs through January 22. Bring your new and gently used warm weather clothing to either Springbrook Nature Center or Fridley Civic Campus. (Insulated jackets, snowpants, new hats, mittens, and winter boots for all ages are on our wish list this year)





AGENDA REPORT

Meeting Date: February 3, 2025

Meeting Type: Parks and Recreation Commission

Submitted By: Jeff Jensen, Operations Manager – Streets, Parks, and Facilities

Title

Park Maintenance and Construction Report

Background

Attached is the Park Maintenance and Construction report for the February 3, 2025 meeting.

Financial Impact

None.

Recommendation

None.

Attachments and Other Resources

- Park Maintenance Report for February 3, 2025 meeting

Vision Statement

We believe Fridley will be a safe, vibrant, friendly and stable home for families and businesses.



Memorandum

Item 6.

Date: 1/22/2025
To: Mike Maher, Parks and Recreation Director
From: Jeff Jensen, Operations Manager, Streets, Parks, Facilities
DEPT: Public Works
CC: Margo Numedahl, Parks and Recreation Manager
RE: Parks and Recreation Commission Report for February 3rd, 2025 Meeting

January weather has been favorable for ice conditions and ice rinks have been kept in good shape. We have daily rink maintenance, park clean-up and equipment maintenance.

We will be starting tree trimming and removal now that the ground is very frozen and continue to be ready for snow removal and trail maintenance.

We have equipment ready but do not have enough snow yet to have cross-country ski trails groomed.



AGENDA REPORT

Meeting Date: February 3, 2025

Meeting Type: Parks and Recreation Commission

Submitted By: Margo Numedahl, Recreation Division Manager

Title

Fridley Parks and Recreation Division Report

Background

Attached is the update from the Parks and Recreation Department for the February 3, 2025 Parks and Recreation Commission meeting.

Financial Impact

None.

Recommendation

None.

Attachments and Other Resources

- Attached is the update from the Parks and Recreation Department for the February 3, 2025 Parks and Recreation Commission meeting.

Vision Statement

We believe Fridley will be a safe, vibrant, friendly and stable home for families and businesses.



HIGHLIGHTS

Recreation Division: January 2025

Winter Programs

Below is a list of programs and participation numbers for those that took place in January.

All Ages

Mini Woven Tapestry: Jan 30	20
-----------------------------	----

Preschool: Ages 3-5

Basketball (6 sessions): Jan-Feb	9
Sports Sampler (6 sessions): Jan-Feb	5

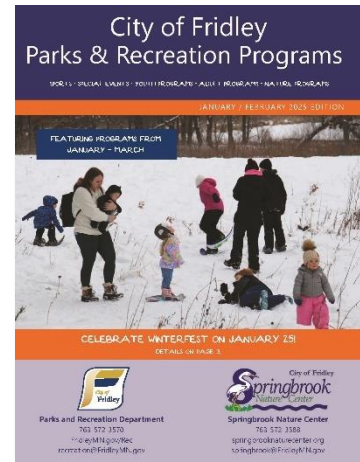
Elementary – Middle School: Grades K-7

Basketball Gr. K-4 (6 sessions): Jan-Feb	12
Slimy, Goey, Sticky Gr. K-4 (6 sessions): Jan-Feb	12
Space Explorers Gr. K-4 (6 sessions): Jan-Feb	11

Adult Fitness and Athletics

Zumba (2 classes/6 sessions each): Jan-Feb	20
Aqua Zumba (6 sessions): Jan-Feb	8
Intro to Pickleball Clinic: Jan 4 F=4, SLP=2	6
Pickleball Skills & Drills (4 sessions): Jan-Feb F=6, SLP=6	12
Pickleball Ladder League – All Ages: Jan-Mar F=22, SLP=23	45
Pickleball Ladder League – Ages 20-40: Jan-Mar F=23, SLP=13	36
Women’s Competitive Volleyball League*: Jan-Mar F=2, MV=1, NB=3, SLP=4, individual registrants=1	11 teams
Coed Rec & Comp Volleyball Leagues*: Jan-Mar F=6, MV=2, NB=7, SLP=9, individual registrants=2	26 teams
Bag Toss League: Jan-Mar F=2, MV=7, NB=1, SLP=6	16 teams
Men’s Basketball Competitive League: Dec-Mar	6 teams
Men’s Basketball Rec League: Dec-Mar	10 teams

*North Metro Leagues are offered in cooperation with Mounds View, New Brighton, and Spring Lake Park.



Parks and Recreation Brochure

Staff have finalized the content for the March/April brochure and it is currently being designed. It will be mailed to residents during the last week of February.

January Facility Rentals

Facility	Reservations
Moore Lake Community Building	6

2025 Picnic Shelter Rentals

Picnic shelter rentals opened for the 2025 season on January 3. This year we have both shelters at Locke Park, one at Flanery and one at Moore Lake available for reservation. Commons Park will be closed for the season due to construction. We currently have 23 bookings with the majority of the reservations made for Locke Park Shelter #1 at 18 rentals. Most customers have used the online option to make their reservations.

Skating & S'mores

Our annual skating and s'mores event was held on Friday, January 17. We had about 60 people show up, despite the dropping temps and gusty winds, and many people were trying skating for the first time! The ice was perfect thanks to the great Parks crew. People enjoyed a s'more by the fire, fun on the rink, and the warming house saw a lot of action as people came in to warm up--some families even stayed the entire 2 hours! It was a great event and a perfect way for people to try skating and learn about the warming house and our free skates available for use.



Adult Volleyball Leagues

The winter session of the North Metro Volleyball Leagues began in January. Leagues will run through March and consist of two recreational coed leagues, one competitive coed league, and a competitive women's league. Games take place on Monday and Wednesday nights at the Highview Middle School. Participants can register as a team or they can register as an individual and be placed on a team. We continue to have enough individuals register each season to create a full team.

Pickleball Leagues

Winter Pickleball Leagues began in January. We offer two leagues on Monday and Wednesday nights at Hayes Elementary School. We offer a league for all ages and a league for players between the age of 20 – 40. These leagues are a partnership with Spring Lake Park Parks and Recreation.

Pickleball Classes

A Pickleball Class and Clinic began in January. We offered a single day intro clinic for people new to the sport of Pickleball and an intermediate skills and drills 4-session class for players to refine their skills.

North Metro Bag Toss League

The largest ever North Metro Bag Toss league began at the Mounds View Community Center this January. In total we gathered 16 teams filling our league to capacity for the first time ever.

Winterfest

The community joined us at Springbrook for a fun celebration of winter on Saturday, January 25 from 12 – 3 p.m. We estimate that 400 people came through to enjoy the many activities including: fat tire biking, ice safety demo, campfires, photo ops, K9 demo, storytime, arts & crafts, ice cube sculpting, games, scavenger hunt, sauna demo, winter gear grab, and the always popular medallion hunt.

This event would not be possible without our many volunteers and partners. A huge thank you to the Fridley Lions for their financial sponsorship and for volunteering the day of the event. In addition, we had many student and adult volunteers that help with activities. The following groups joined us to provide an activity and information about their organizations: Anoka County Library Mississippi Branch, Bliss Mobile Wellness, Boy Scouts, Coon Creek Watershed District, Fridley Environmental Planning, Fridley Public Safety Department (Fire and Police), Lenka Seferovic, Girl Scouts, Rum River Art Center, and Trailhead Cycling.

