



# Public Arts Commission

July 09, 2025

6:00 PM

Fridley Civic Campus, 7071 University Ave N.E.

---

## Agenda

### Call to Order

### Roll Call

### Approval of Meeting Minutes

1. June 4, 2025 Public Arts Commission Minutes

### New Business

2. Commons Park Sculpture Update
3. Updated Workplan
4. Smaller-scale Public Art Options
5. Moore Lake Park Sculpture Update

### Old Business

### Other Items

### Adjournment

---

#### Accessibility Notice:

- If you need free interpretation or translation assistance, please contact City staff.
- Si necesita ayuda de interpretación o traducción gratis, comuníquese con el personal de la ciudad.
- Yog tias koj xav tau kev pab txhais lus los sis txhais ntaub ntawv dawb, ces thov tiv tauj rau Lub Nroog cov neeg ua hauj lwm.
- Haddii aad u baahan tahay tarjumaad bilaash ah ama kaalmo tarjumaad, fadlan la xiriir shaqaalaha Magaalada.

Upon request, accommodation will be provided to allow individuals with disabilities to participate in any City of Fridley services, programs or activities. Hearing impaired persons who need an interpreter or other persons who require auxiliary aids should contact [CityClerk@FridleyMN.gov](mailto:CityClerk@FridleyMN.gov) or (763) 572-3450.



# AGENDA REPORT

---

**Meeting Date:** July 9, 2025

**Meeting Type:** Public Arts Commission

**Submitted By:** Mike Maher, Parks and Recreation Director

## **Title**

---

June 4, 2025 Public Arts Commission Minutes

## **Background**

---

Attached are the meeting minutes of the June 4, 2025 Public Arts Commission.

## **Financial Impact**

---

None.

## **Recommendation**

---

Staff recommends approval of the June 4, 2025 Public Arts Commission minutes.

## **Attachments and Other Resources**

---

- June 4, 2025 Public Arts Commission Minutes.

## **Vision Statement**

We believe Fridley will be a safe, vibrant, friendly and stable home for families and businesses.



# Public Arts Commission Meeting

June 4, 2025

6:00 PM

Fridley City Hall, 7071 University Avenue NE

## Minutes

### **Call to Order**

Chair Collins called the Parks and Recreation Commission meeting to order at 6:00 p.m.

### **Present**

Josh Collins, Chair  
 Ryan Fugleberg, Vice Chair  
 Gary Osterbauer  
 Gary Swanson  
 Maija Sedzielarz  
 Frank Sedzielarz  
 Kara Ruwart  
 Mike Maher, Parks and Recreation Director  
 Jesslyn Quiram, Engineering Technician

### **Approve Public Arts Commission Agenda for June 4, 2025**

*Motion by Commissioner Maija Sedzielarz to approve the June 4, 2025 meeting agenda. Seconded by Commissioner Swanson. The motion passed unanimously.*

### **Approve Public Arts Commission Minutes for May 7<sup>th</sup> and 14<sup>th</sup>, 2025\***

*Motion by Commissioner Swanson to approve the May 7, 2025 meeting minutes. Seconded by Commissioner Osterbauer. The motion passed unanimously.*

*Motion by Commissioner Swanson to approve May 14, 2025, meeting minutes. Seconded by Commissioner Osterbauer. The motion passed unanimously.*

*\*Additional corrections were requested to the April 2<sup>nd</sup>, 2025 minutes. These minutes will be amended and submitted for approval at the July 9<sup>th</sup> meeting.*

### **New Business**

1. Moore Lake Park Sculpture Update

Staff stated that a meeting with the Rice Creek Watershed District and artist Jessica Turtle had been scheduled for Monday June 2<sup>nd</sup> but was rescheduled for Monday, June 9<sup>th</sup>. Staff will update the Commission on the takeaways from the meeting with the expectation that the project timeline, installation location and transportation logistics will be firmed up.

Staff also presented a first draft of a sign that will be installed at the public art site at Moore Lake and will serve as a template for future art program signage.

The Commission presented feedback on the sign including moving the artwork description to the top, including information on Fridley's public arts program, possibly removing the circular graphic in the top right corner, exploring the idea of using a QR code or link to the art program webpage and making sure the sign font and layout follow best practices for accessibility.

Staff additionally requested feedback on a ceremony to mark the installation of the public art project at Moore Lake. The Commission suggested combining the event with a public concert that is already scheduled on a weekday evening this summer.

The Commission took no formal action on this item.

## 2. 2025-2026 Workplan Draft Discussion

Staff stated that a draft workplan document was drafted to capture a list of projects, priorities and ideas discussed in past meetings of the Public Arts Commission.

The Commission suggested several additions to the workplan including; follow up on an inquiry to create a mural project at the Commons Park basketball courts, to explore a program offered by a company that creates mural-ready sculptural benches from recycled wind turbines, exploring options to add art into city utility and infrastructure projects, and to look at a mural or sculpture walk/stroll program.

*No formal action was taken on this agenda item.*

## 3. Commons Park Sculpture Community Engagement Model

Staff stated that a draft copy of an agreement for the Commons Park sculpture project was included in the Commission packet. The agreement has been reviewed by the City Attorney and represents the interests of the City of Fridley, Artist and Fridley Creative Arts Foundation.

The Commission suggested allowing additional time for the Artist to create a conceptual design and budget and to better define expectations for community engagement.

Staff will make the modifications and send the agreement to the Artist for review. If substantial changes are requested by the Artist, the agreement will be subject to a final legal review before going to Fridley City Council for approval.

*No formal action was taken by the Commission on this item.*

### **Old Business**

### **Other Items**

Commissioner Frank Sedzielarz wished to discuss an inquiry by artist Lisa Elias regarding the RFQ review process. Ms. Elias questioned if a secondary, corrected submission was included in the packet of information used for evaluation of artist qualifications. Review indicated that this second submission was not included in an electronic version of the materials but was added to the printed packets that were distributed to each of the Commissioners prior to the evaluation meeting. The Commission did not feel that this omission impacted the results of their evaluation and it was determined that staff would follow up with Ms. Elias to inform her of the outcome of her inquiry.

Additionally, the Commission discussed community outreach at the Fridley 49er Days Festival, being held June 12-14. Several Commissioners will be volunteering at an information table for the Fridley Public Arts Foundation. The question of what stories or perspectives might be missing from our public spaces was determined to be the theme of the engagement process.

### **Adjournment**

*Commissioner Osterbauer made the motion to adjourn the meeting at 8:00 p.m. Seconded by Commissioner Ruwart. The motion passed unanimously.*

Respectfully submitted,

Mike Maher, Parks and Recreation Director  
Recording Secretary



# AGENDA REPORT

**Meeting Date:** July 9, 2025

**Meeting Type:** Public Arts Commission

**Submitted By:** Mike Maher, Parks and Recreation Director and Jesslyn Quiram, Engineering Technician

## Title

Commons Park Sculpture Update

## Background

The Public Arts Commission has selected artist Ken McCall to create a work of sculpture for Commons Park, currently under construction as a destination park in Fridley. A draft of an agreement, which had been reviewed by Fridley's City Attorney, was presented to the Commission at the June 4<sup>th</sup> meeting. Staff utilized feedback from this meeting to make several edits to the agreement to better define the timeline and expectations for community engagement.

The updated agreement was sent to Mr. McCall for review and comments were received back. As of 6/24, staff are reviewing the comments and will continue to work with the Artist and City Attorney to reach an agreement that all parties are comfortable with.

The Commons Park construction project will move into phase 2, to include the area where the sculpture will be installed, on July 7<sup>th</sup>. A construction schedule is included in the packet for the information of the Commission to utilize in discussion on phasing of the concrete foundation that will need to be designed and installed for the sculpture and for ongoing discussion on recognition of the sculpture upon completion, with a goal of June 2026.

## Financial Impact

The Fridley Creative Arts Foundation has agreed to pay up to \$50,000 for the commission of a sculpture at Commons Park and is a third party in addition to the City and Artist in the agreement.

## Recommendation

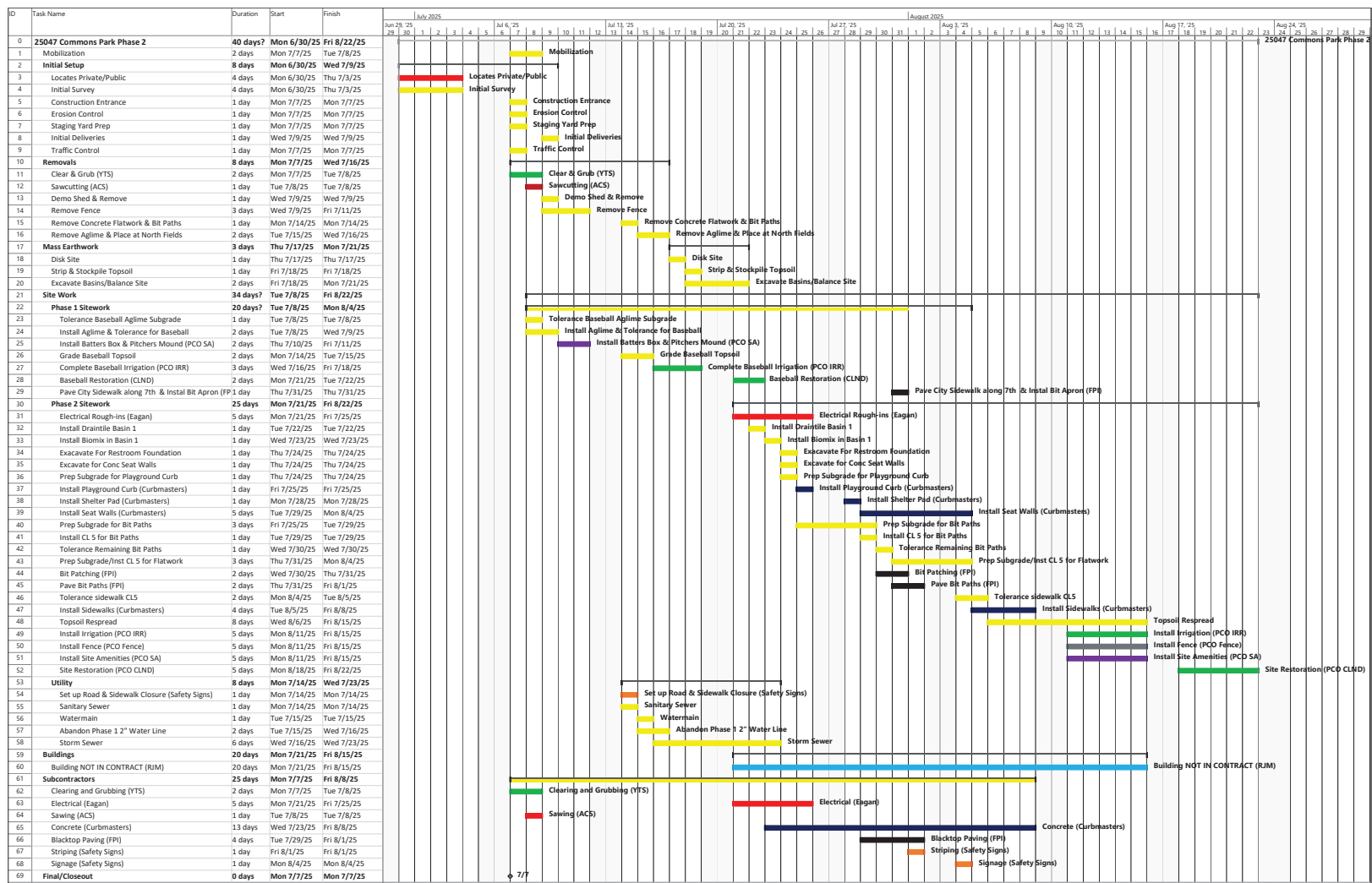
None

## Attachments and Other Resources

- Commons Park Phase 2 Site Work Schedule

## Vision Statement

We believe Fridley will be a safe, vibrant, friendly and stable home for families and businesses.





# AGENDA REPORT

---

**Meeting Date:** July 9, 2025

**Meeting Type:** Public Arts Commission

**Submitted By:** Mike Maher, Parks and Recreation Director

## **Title**

---

Updated Workplan

## **Background**

---

The Public Arts Commission reviewed a first draft of a workplan at their June 4<sup>th</sup> meeting, providing staff with several additions. The workplan has been updated to reflect the additional input of the Commission and will be updated frequently to track progress on projects and guide agenda items for future meetings.

## **Financial Impact**

---

None

## **Recommendation**

---

None

## **Attachments and Other Resources**

---

- Workplan Draft updated on 6-24-2025

## **Vision Statement**

We believe Fridley will be a safe, vibrant, friendly and stable home for families and businesses.



# Public Arts Commission 2025-2026

**Workplan Draft**

**Updated June 24, 2025**





### 2025 Public Arts Commission **Workplan Draft – Updated for July Meeting**

#### Goals and Strategic Initiatives:

1. Definition of Public Art: A work of art designed and or created by an artist or artist-led team located indoor or outdoors and visually and/or physically accessible to the public. It may include permanent visual art, performances, installations, evets and temporary works.
2. Community: Foster community identity and spirit, promote cultural enrichment and economic development through creative arts, encourage public art involvement, and inspire innovation to build a vibrant arts community.
3. Historic/Cultural focus: Develop distinctive destinations that highlight the area's evolving history and foster collaboration among artists and Fridley's diverse community, celebrating heritage, ethnicity, and civic pride to transform it into an arts destination.
4. Arts Commission focus: The Arts Commission aims to connect with city departments for public art programs, engage with other jurisdictions for support, communicate goals citywide, ensure maintenance of art collections, and partner with the Fridley Arts Foundation for long-term funding and program viability.
5. Utilize a meeting format and schedule that meets desired outcomes for staff and Commissioners:
  - a. Incorporate work session/site tour format as needed to better facilitate advisory role of Commission
  - b. Meeting cancellations when/if a meeting is not needed
  - c. Discuss options for recording meetings and minutes
6. Monthly check-in meeting with the Chair and Staff to plan future meeting agendas and share information.



**2025-2026 Workplan**

<b>Item</b>	<b>Process</b>	<b>Status</b>
2025-2026 Goals and Workplan	<ul style="list-style-type: none"> <li>Review at June 2025 meeting, make updates per direction of Commission</li> <li>Update throughout year</li> </ul>	In progress
Commissioner Orientation and Training	<ul style="list-style-type: none"> <li>Review Commission onboarding manual</li> <li>All commissioners have signed code of conduct agreement</li> </ul>	Complete for 2025
Vice Chair	<ul style="list-style-type: none"> <li>Nominations annually. Ryan Fugleberg is 2025 Vice-chair</li> </ul>	Complete for 2025
Commission Chair	<ul style="list-style-type: none"> <li>Establish monthly check-in meeting with Chair and Staff to set agenda for the following meeting</li> </ul>	In progress
Programs and Special Events	<ul style="list-style-type: none"> <li>Opportunities to volunteer at Parks and Recreation programs and events to promote public art program</li> <li>Presence at Fridley 49er Days Festival</li> <li>Provide guidance for the creation of a signature arts festival to be held at the newly renovated Commons Park site</li> </ul>	In progress, ongoing
Commons Park Sculpture	<ul style="list-style-type: none"> <li>Work with artist on conceptual design of sculpture</li> <li>Work with artist to refine concept design into final design</li> <li>Provide recommendations on celebration and recognition of completed artwork</li> </ul>	In progress
Mississippi St. Underpass Mural Project	<ul style="list-style-type: none"> <li>Coordinate timeline of mural concepting with construction and development timeline</li> <li>Identify funding sources and budget target</li> <li>Identify possible themes for mural</li> </ul>	Future project
Fridley Civic Campus Art Project	<ul style="list-style-type: none"> <li>Evaluate possibility of Issac Kidder sculpture being installed at Civic Campus pending grant funding</li> </ul>	Future project



## 2025-2026 Public Arts Commission

	<ul style="list-style-type: none"> <li>Consider concept for art trail to extend from Civic Campus into Locke Park and Community Park (community park only if underpass/overpass is established)</li> </ul>	
Consider implementation of a rotating public art program	<ul style="list-style-type: none"> <li>Create program parameters and policy document</li> <li>Connect with staff in communities with rotating public art program</li> <li>Identify source of funding for honorariums for artists displaying works in Fridley</li> <li>Consider a planned route or walk for murals or sculptures</li> </ul>	Future project
Consider implementation of an art bench program at City Parks	<ul style="list-style-type: none"> <li>Create program parameters and policy document if program establishment is identified as a goal of the Commission</li> <li>Establish source of funds for artist awards if program is established</li> </ul>	Future project
Follow up on inquiry from community members for a mural at Commons Park Basketball Court to honor Nathan Sheferaw – Shifty’s Premium Cuts	<ul style="list-style-type: none"> <li>Reestablish contact with stakeholders</li> <li>Request concept drawing of mural</li> <li>Explore possible alternatives to court surface mural</li> <li>Review policy to ensure alignment</li> </ul>	Future project
Explore option of Noblewins wind turbine upcycled benches as option for public art murals	<ul style="list-style-type: none"> <li>Meet with representative to get product materials and pricing</li> <li>Consider in relation to other options for murals and benches and weigh budget, impact, etc.</li> </ul>	Introduce at 7-9-2025 meeting
	<ul style="list-style-type: none"> <li></li> </ul>	
	<ul style="list-style-type: none"> <li></li> </ul>	
	<ul style="list-style-type: none"> <li></li> </ul>	



# AGENDA REPORT

**Meeting Date:** July 9, 2025

**Meeting Type:** Public Arts Commission

**Submitted By:** Mike Maher, Parks and Recreation Director, Jesslyn Quiram, Engineering Technician

## Title

Smaller-scale Public Art Options

## Background

The Public Arts Commission has identified interest in establishing programs and opportunities for smaller-scale art installations throughout the City of Fridley. Upcoming meetings can be used to explore the merits of various programs including murals on Noblewins benches, unique art benches, and rotating sculpture spaces, to name a few.

Staff met with a representative from Noblewins, who makes benches with large surface area from upcycled wind turbines. These benches have been used in numerous communities for public art programs as a canvas for murals.

## Financial Impact

None

## Recommendation

None

## Attachments and Other Resources

- Noblewins catalog and sole source letter

## Vision Statement

We believe Fridley will be a safe, vibrant, friendly and stable home for families and businesses.



Item 4.

**NOBLEWINS**

**2025 CATALOG**





NOBLEWINS

**THANK YOU FOR EXPLORING NOBLEWINS.**

**YOUR TIME AND INTEREST MEAN A LOT TO US. AT NOBLEWINS, WE CRAFT OUTDOOR FURNITURE THAT'S BUILT TO LAST AND DESIGNED TO INSPIRE – BLENDING DURABILITY, ART, AND SUSTAINABILITY INTO EVERY PIECE.**

**WE BELIEVE OUTDOOR SPACES SHOULD BE AS TIMELESS AS THE MATERIALS WE USE. WHETHER YOU'RE ENVISIONING A BOLD GATHERING SPOT OR ADDING PUBLIC ART TO YOUR COMMUNITY, WE'RE EXCITED TO BE PART OF YOUR JOURNEY.**

**LET'S CREATE SOMETHING LASTING TOGETHER.**





NOBLEWINS

# PRIMARY MATERIAL



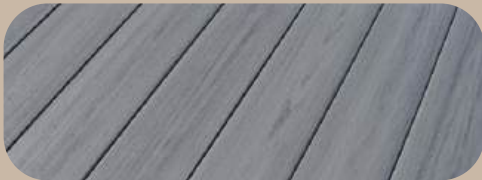
RETIRED WIND TURBINE BLADE

## CUSTOMER BENEFITS

- 3-5" THICK FIBERGLASS
- EXTREMELY DURABLE
- NO MAINTENANCE
- NO RUST OR CORROSION
- MOISTURE RESISTANT
- PERFORMS IN ALL CLIMATES



# SECONDARY MATERIALS



## UPCYCLED PVC

A SUSTAINABLE, LOW-MAINTENANCE FINISH THAT MIMICS NATURAL WOOD. WILL NOT SPLINTER, WARP OR FADE.



## ALUMINUM FRAMES

LIGHTWEIGHT, RUST-RESISTANT, AND BUILT TO PROVIDE LASTING STRUCTURAL SUPPORT IN ANY ENVIRONMENT



## STAINLESS STEEL FASTENERS

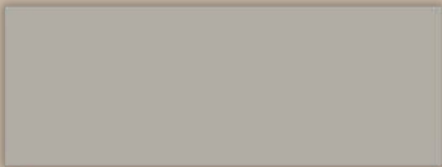
CORROSION-RESISTANT AND BUILT TO WITHSTAND THE HARSHTEST OUTDOOR CONDITIONS FOR LASTING STRENGTH AND STABILITY



NOBLEWINS

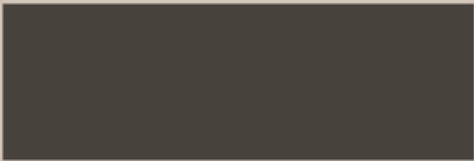
# FINISHES

WE COMPLETE EACH PIECE WITH AN ANTI-GRAFFITI FINISH, USING A TWO-PART EPOXY PAINT DESIGNED TO WITHSTAND HARSH ENVIRONMENTS.



## STONE

A LIGHT BEIGE WITH  
SUBTLE UNDERTONES  
THAT ADDS COMFORT  
TO ANY SPACE



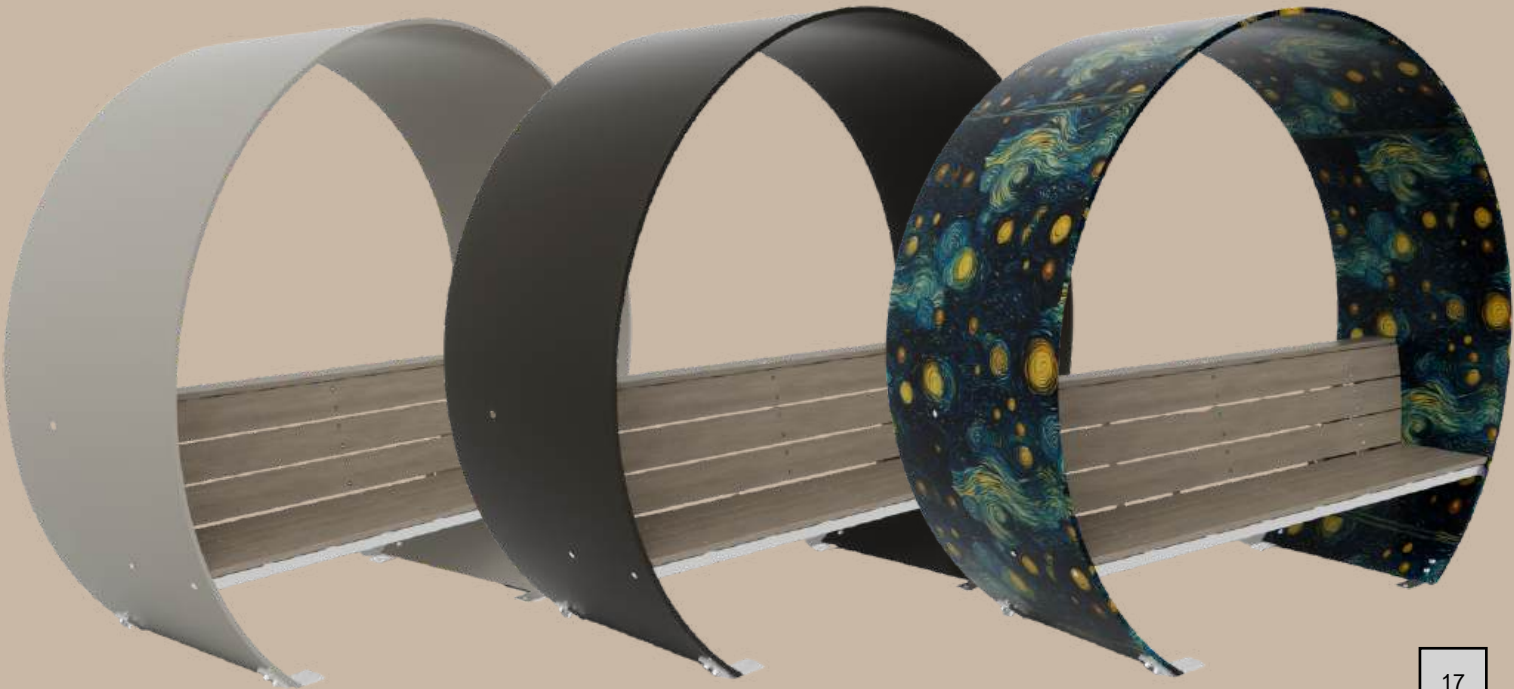
## TIMBER

A DARK BROWN THAT  
ADDS WARMTH AND  
RICHNESS TO OUTDOOR  
SPACES



## PRIMED

A BLANK CANVAS FOR ARTISTIC EXPRESSION





NOBLEWINS

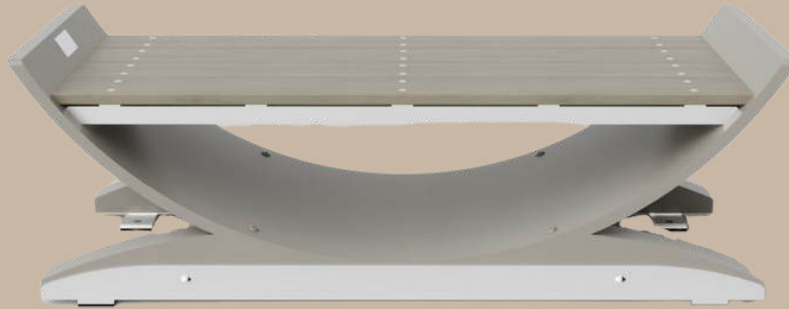
# PRIMED PROJECTS

EMPOWER YOUR COMMUNITY. TURN YOUR SPACES INTO STATEMENTS.





**YOSEMITE**  
**\$3,775**



**WIDTH: 60-72"**  
**DEPTH: 24"**  
**HEIGHT: 21"**  
**SEAT HEIGHT: 18"**  
**WEIGHT: 400 LBS**

**BIG BEND**  
**\$3,975**



**WIDTH: 72-84"**  
**DEPTH: 24"**  
**HEIGHT: 40"**  
**SEAT HEIGHT: 18"**  
**WEIGHT: 400 LBS**

**ZIÖN**  
**\$8,475**



**WIDTH: 8'**  
**TABLE DEPTH: 40"**  
**TABLE HEIGHT: 32.5"**  
**SEAT DEPTH: 17"**  
**SEAT HEIGHT: 18"**  
**WEIGHT: 850 LBS**

**SEQUOIA**  
**\$4,975**



**WIDTH: 72-84"**  
**DEPTH: 30"**  
**HEIGHT: 40"**  
**SEAT HEIGHT: 18"**  
**WEIGHT: 1200 LBS**



# YOSEMITE

**\$3,775**

**WIDTH: 60-72"**

**DEPTH: 24"**

**HEIGHT: 21"**

**SEAT HEIGHT: 18"**

**WEIGHT: 400 LBS**



**BIG BEND**  
**\$3,975**

**WIDTH: 60-72"**  
**DEPTH: 24"**  
**HEIGHT: 40"**  
**SEAT HEIGHT: 18"**  
**WEIGHT: 400 LBS**

# ZIÖN

Item 4.

**\$8,475**



**WIDTH: 8'**

**TABLE DEPTH: 40"**

**TABLE HEIGHT: 32.5"**

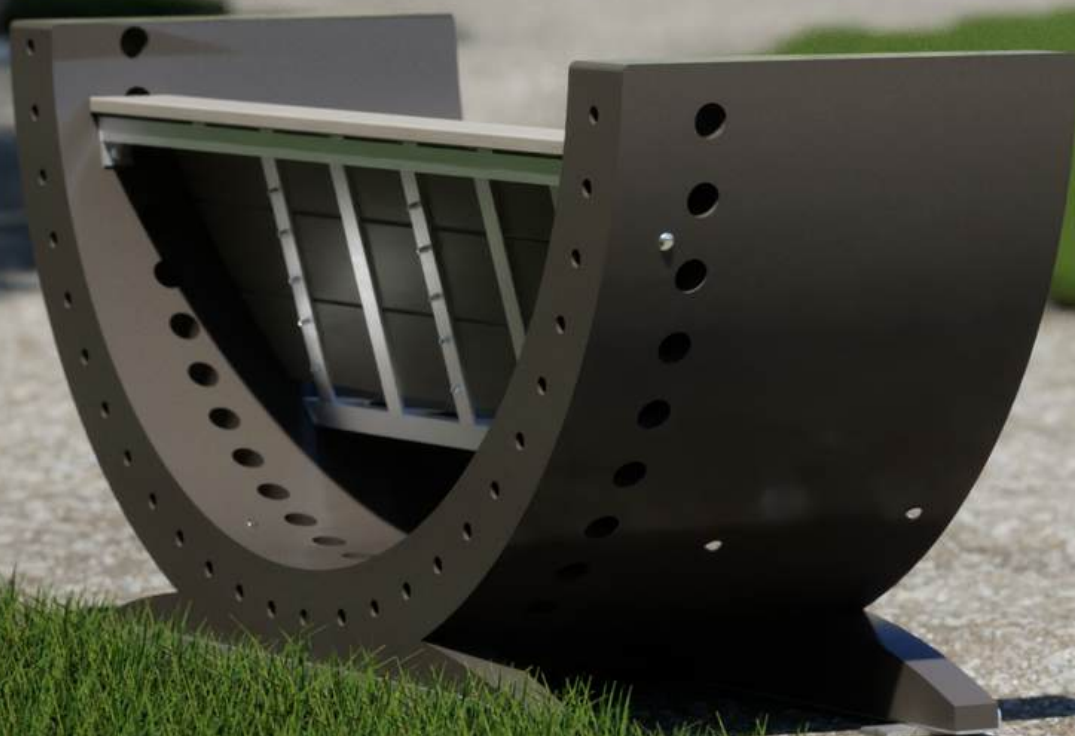
**SEAT DEPTH: 17"**

**SEAT HEIGHT: 18"**

**WEIGHT: 850 LB**

# SEQUOIA

**\$4,975**



**WIDTH: 72-84"**

**DEPTH: 30"**

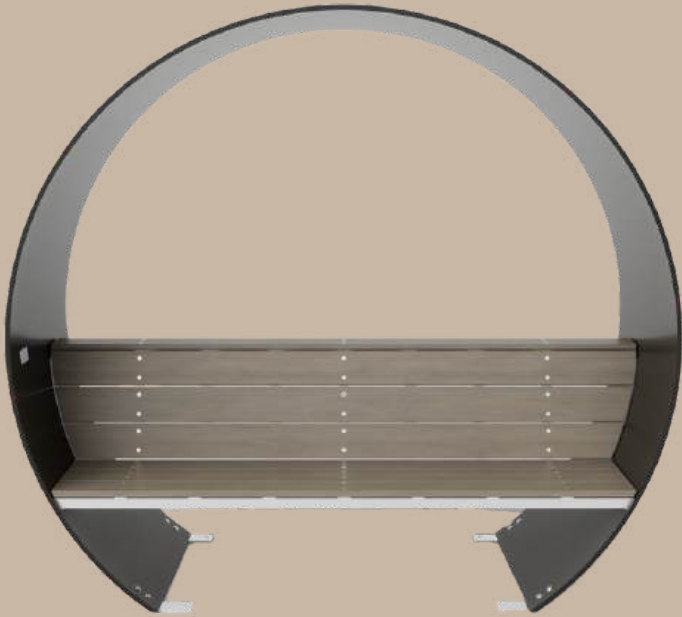
**HEIGHT: 40"**

**SEAT HEIGHT: 18"**

**WEIGHT: 1200 LBS**



**ARCH**  
**\$8,475**



**SEAT HEIGHT: 18"**  
**SEAT WIDTH: 77"**  
**WEIGHT: 2000 LBS**  
**WIDTH: 90-96"**  
**DEPTH: 36"**  
**HEIGHT: 80-86"**

**EVERGLADE**  
**\$8,475**



**SEAT HEIGHT: 18"**  
**SEAT WIDTH: 48"**  
**WEIGHT: 2000 LBS**  
**WIDTH: 90-96"**  
**DEPTH: 36"**  
**HEIGHT: 80-86"**

**ACADIA**  
**\$6,495**

**LIMITED SUPPLY**  
**PRIMED ONLY**



**WIDTH: 50-70"**  
**DEPTH: 30"**  
**HEIGHT: 91-112"**  
**SEAT HEIGHT: 18"**  
**WEIGHT: 550-650 LBS**

Item 4.



# ARCH

**\$8,475**

**WIDTH: 90-96"**

**DEPTH: 36"**

**HEIGHT: 80-86"**

**SEAT HEIGHT: 18"**

**SEAT WIDTH: 25 7"**

**WEIGHT: 2000 LBS**

# EVERGLADE

\$8,475

Item 4.



**WIDTH: 90-96"**

**DEPTH: 36"**

**HEIGHT: 80-86"**

**SEAT HEIGHT: 18"**

**SEAT WIDTH: 48"**

**WEIGHT: 2000 LBS**

# ACADIA

Item 4.

# \$6,495



**WIDTH: 50-70"**

**DEPTH: 30"**

**HEIGHT: 91-112"**

**SEAT HEIGHT: 18"**

**WEIGHT: 550-650 LBS**

**LIMITED SUPPLY  
PRIMED FINISH ONLY**



# COST COMPARISON

What Will Your Bench Cost Over 25 Years?



Feature	<b>NOBLEWINS</b>	Composite Wood	Concrete	Metal	Traditional Wood
Average Cost	\$6,000	\$3,000	\$5,000	\$3,500	\$2,000
Maintenance Cost	\$0	\$250/year	\$240/year	\$320/year	\$520/year
Replacement Cycle	None	2x	2x	2-3x	3x
Total 25-Year Cost	<b>\$6,000</b>	<b>\$9,250</b>	<b>\$11,000</b>	<b>\$11,500</b>	<b>\$15,000</b>

## WHY CHOOSE NOBLEWINS

- Lowest Total Cost – No maintenance or replacements needed over 25 years
- No Assembly Required – Delivered fully built and ready to install
- Durability That Lasts – Built to withstand the elements and heavy use
- Outperforms Traditional Options – Replaces 2-3 wood, metal, or concrete benches
- Public Art Ready – Custom-painted options turn seating into lasting community art
- Sustainable Choice – Made from upcycled wind turbine blades

# LIMITED TIME SPECIALS

Expiring July 31

## PILOT PROGRAM DISCOUNT

5% off your first order

## PRIMED DISCOUNT

10% off any pieces in the Primed finish

## BULK DISCOUNT

15% off total orders of 8+ products

**LIMITED PRODUCTION SLOTS AVAILABLE**  
**3-6 MONTH LEAD TIME**

**CRAFTED WITH PURPOSE.  
BUILT TO LAST.  
DESIGNED TO INSPIRE.**



**NOBLEWINS**

**READY TO BRING YOUR VISION TO LIFE?**

 **(440) 306-9006**

 **INFO@NOBLEWINS.COM**



**NOBLEWINS**

To Whom It May Concern:

This letter is to confirm that the products made from retired wind turbine blades supplied by Noblewins LLC are sole source products, sold and distributed exclusively by Noblewins LLC. No other company supplies a similar or competing product. These products must be purchased directly by a customer from Noblewins LLC or donated to them. There are no agents or dealers authorized to represent these products.

Competition is precluded by the exclusive nature of these products and the proprietary technology involved in their creation. There are no other like products available for purchase that would serve the same function due to this exclusivity.

Our products come with a 25-year warranty, demonstrating our commitment to quality and long-term value for our customers.

If you desire additional information, don't hesitate to contact us at 440-306-9006 at any time or visit our website at [www.noblewins.com](http://www.noblewins.com).

Thank you for your interest in our products and your desire to reimagine your spaces and inspire your citizens, students, and visitors with sustainable solutions.

Sincerely,

Brian Donahue  
President  
Noblewins LLC  
[donahue@noblewins.com](mailto:donahue@noblewins.com)



# AGENDA REPORT

**Meeting Date:** July 9, 2025

**Meeting Type:** Public Arts Commission

**Submitted By:** Mike Maher, Parks and Recreation Director, Jesslyn Quiram, Engineering Technician

## Title

Moore Lake Park Sculpture Update

## Background

A sculpture of a Northern Leopard Frog, which will be covered with colorful mosaic tile, is being crafted by artist Jessica Turtle with funding from the Rice Creek Watershed District and the Fridley Creative Arts Foundation (gift from Mary Tjosvold). The artist has provided a timeline for completion of the sculpture in early July and staff met with the artist and Watershed District on Monday June 9 to discuss logistics for transportation and installation.

Staff did discuss the placement location at length with the artist and watershed district staff. The concept plan called for installation in a stormwater pond to create the effect of the frog sitting atop the water. Based on further on-site analysis, staff recommends creating a landscaped garden feature approximately 100 feet from the pond for the following reasons:

- Concerns with draining the pond for installation and uncertainty that the wet pond bottom would support the foundation materials without moving or heaving
- Fluctuating water levels, leaving the frog above or below the water line depending on water heights
- Viewing access for wheelchair users and those with strollers
- Concern with cattail growth inhibiting viewing of the sculpture

The watershed district staff and Artist were enthused about the idea of creating a small garden area with some seating and play features surrounding the frog sculpture and the artist confirmed that the sculpture would be built to withstand touching and possible climbing. A nature-based feature with play value is supported in the Park System Improvement Plan concept plan (attached).

Staff would like feedback from the Commission on:

- The updated proposed location of the sculpture
- Ribbon cutting or recognition ceremony for the installation of the art piece

## Vision Statement

We believe Fridley will be a safe, vibrant, friendly and stable home for families and businesses.

**Financial Impact**

---

None

**Recommendation**

---

Staff recommends the Commission endorse the proposed installation location of the Northern Leopard Frog sculpture.

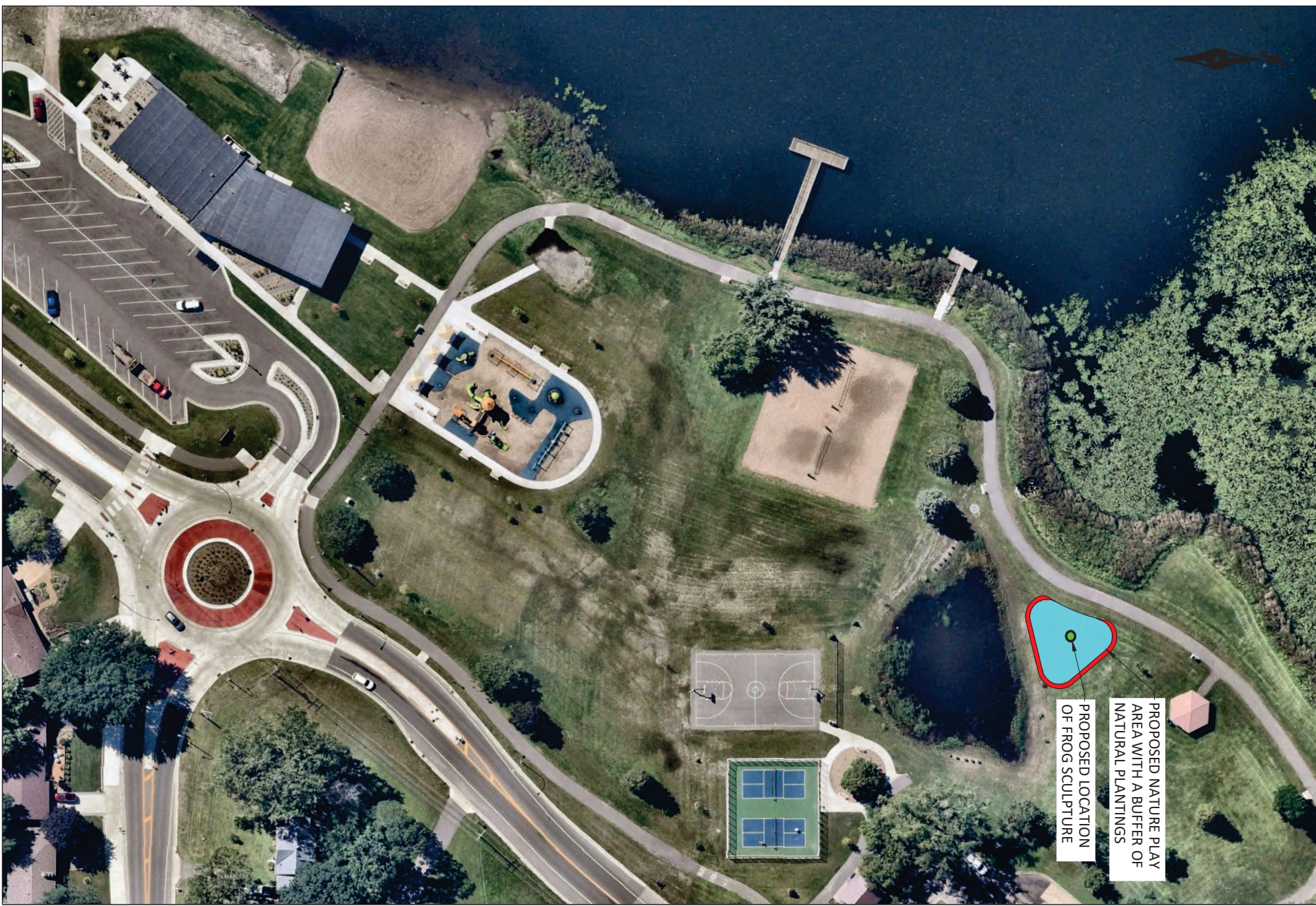
**Attachments and Other Resources**

---

- Moore Lake Park Concept Plan from approved Park System Improvement Plan
- Map showing proposed location of public art installation
- Inspiration images of frog sculpture in garden setting

**Vision Statement**

We believe Fridley will be a safe, vibrant, friendly and stable home for families and businesses.



# Moore Lake Park

5890 NE CENTRAL AVENUE

**PARK TYPE:** COMMUNITY PARK

**SIZE:** 143-ACRES

**SPECIAL USES:** LAKESHORE RECREATION

### DESCRIPTION:

Historically, the beach at Moore Lake provided families a convenient location to swim and recreate. Over the years, attendance at Moore Lake Beach significantly declined, resulting in the closure of the beach and concession stand. Water quality has also declined and the amenities are outdated and in poor condition.

Feedback gathered as part of the Master Plan process indicated that residents wanted to see Moore Lake Park transition from an active recreational space to a passive recreational space and lakeshore destination with more trails, picnic areas, natural landscaping, fishing, and the opportunity to rent kayaks and stand up paddle boards.



**EXISTING PARK FEATURES:**

- 
- 
- 
- 
- 
- 
- 
- 



**PLANNING BACKGROUND:**

Due to the current downgraded condition of the park, community feedback resulted in a strong desire to make improvements to this park site that many consider a gateway to the Fridley community due to its highly visible location from Central Ave / Hwy 65. A Concept Plan for Moore Lake Park was initially created that removed courts in order to provide improved passive and lake related improvements. Community feedback included a desire to keep a basketball court to meet the demographic needs of the surrounding neighborhoods, and the removal of the dog park due to its small size as well as the perceived impression it would contribute negatively to water quality. During the 2020 planning stage, modified flood elevations put the majority of the park land within affected flood zones and directly impacted the feasibility of the proposed building.



**RECOMMENDATIONS - LAKESHORE ACTIVITIES:**

A refined concept plan for Moore Lake was developed focusing on the initial design intent for passive recreation for picnics and gatherings, as well as lakeshore activities. Enhancing Moore Lake Park as an iconic community gateway was recognized as a top priority. Other strategies to improve the park were related to improved water quality in order for water related recreation to be successful.

Recommendations include:

- Improved and expanded picnic opportunities
- Water related activities to include paddle rental kiosk and storage with boarding dock
- Park pavilion (location and size to be determined based on flood zones) with rental meeting room, restrooms and potential vending area
- Improved parking areas
- Basketball court
- Flexible open lawn spaces
- Naturalized spaces suitable for occasional flooding and stormwater storage
- New playground meeting a broader range of ages and abilities
- Optional natural play space
- Lakeside seating and viewing areas
- Improved trail connections and internal loops
- Incorporating landscaping and public art

**PRIORITY LEVEL:**



This is currently a highly visible park in very poor condition which ranked as the highest in overall priority among all the community parks from the community, and therefore is ranked high.

Estimate of Probable Costs is a range of \$4.5 to \$6.4 million for base preferred improvements which currently includes a new pavilion building and an additional \$1.3 to \$2 million for deferred or alternate improvements.



# Fridley Park Concepts - Moore Lake Park

Fridley, Minnesota  
December 9, 2021 | WSB Project number: 016927-000



# Frog Garden Inspiration Images

